



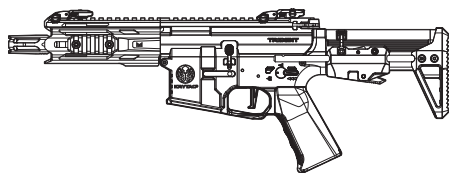
**KRYTAC®**

OWNER'S MANUAL

**TRIDENT**

MK II

PDW-M



# TABLE OF CONTENTS

---

Safety Rules .....	2
Specifications .....	4
Velocity and Energy Output Chart .....	5
Package Contents .....	5
Loading the Magazine .....	6
Fire Selector Switch.....	7
Gen 2 Compact Carbine Stock.....	7
Ambidextrous Sling Loop.....	8
Battery Installation .....	9
Hop-Up System .....	10
Clearing Jammed BBs.....	11
Disassembly .....	12
Assembly .....	13
Main Spring Access .....	14
Cleaning and Maintenance.....	17
Trouble Shooting Guide.....	19
Operating Under Harsh Conditions .....	20
Hearing Protection Requirement.....	20
Contact Information .....	20
Component Diagrams and Lists .....	21



THIS PRODUCT IS NOT INTENDED FOR USE BY UNTRAINED PERSONS (INCLUDING CHILDREN) WITH OR WITHOUT PHYSICAL OR MENTAL HANDICAPS. THESE HANDICAPS INCLUDE REDUCED PHYSICAL, SENSORY OR MENTAL CAPABILITIES, OR LACK OF EXPERIENCE AND KNOWLEDGE OF THE PRODUCT AND SAFETY GUIDELINES. ALL USERS SHOULD HAVE TRAINED SUPERVISION OR INSTRUCTIONS CONCERNING THE USE OF THE APPLIANCE BY A PERSON RESPONSIBLE FOR HIS OR HER SAFETY.

---

# SAFETY RULES

---

Please read the entire KRYTAC manual before operating the airsoft gun. This manual covers important safety, operational, and maintenance topics. It is important that the user reads and understands the manual in order to safely handle and operate the airsoft gun. Failure to follow the safety guidelines and/or operational instructions in this manual may result in serious personal injury or damage to the airsoft gun.

## Safety Guidelines

---

### EYE PROTECTION

Always wear eye protection while shooting, operating, and maintaining your airsoft guns.

### EAR PROTECTION

With noise levels exceeding 85dB(A), appropriate ear protection must be used to prevent any damage due to sound emissions.

### FIREARM SAFETY RULES

**Always assume that the airsoft gun is loaded.** Never assume the chamber is empty based on memory or from someone else's word. An airsoft gun can still fire with the magazine removed.

### KEEP YOUR FINGER OFF THE TRIGGER

Remove your finger from the inside of the trigger guard until your sights are aligned on target and you are ready to fire.

### MUZZLE CONTROL

Always keep the muzzle of the airsoft gun pointed in a safe direction. Never point the airsoft gun towards anything you do not intend to shoot.

### KNOW YOUR TARGET AND ITS SURROUNDINGS (SAFETY DISTANCE)

Take note of objects in front of and beyond your target. Airsoft guns can shoot up to and beyond 150 feet/45.5 meters and may travel further than intended without an adequate backstop. Never shoot an airsoft gun directly at targets such as rocks, glass, water, or other hard surfaces that may ricochet BBs in unpredictable directions.



WARNING

## SAFETY IS YOUR RESPONSIBILITY

---

The KRYTAC airsoft gun is designed and manufactured to KRYTAC's high standards. It was carefully inspected before it was packaged and shipped from our factory. It is the sole responsibility of the user for its safe use and handling. This airsoft gun is safe unless handled irresponsibly or misused.

### BEWARE OF BARREL OBSTRUCTIONS

Ensure that the barrel of your airsoft gun is free and clear of any obstructions prior to firing the airsoft gun. Failure to do so may cause a malfunction, and in some cases damage the airsoft gun.

### KEEP THE SAFETY ON

Keep the fire selector set to safe until your sights are aligned on target and you are ready to fire.

# SAFETY RULES

---

## FAILURE TO FIRE

If the airsoft gun fails to fire, misfires, or malfunctions, do not look into/down the barrel of the airsoft gun. BBs can jam in the chamber and can launch suddenly while under pressure causing serious injury.

## FUSE

DO NOT REMOVE OR BYPASS THE FUSE. It is an integral part of the system,. Alterations to the fuse will void warranty and may result in operational failure and critical damage to internal components.

## MAINTAIN YOUR AIRSOFT GUN PROPERLY

Maintaining your airsoft gun as outlined in the manual ensures that your airsoft gun will be safe to shoot and perform to its designed specifications. Alterations, modifications, or adjustments may damage your airsoft gun, making it unsafe to shoot and/or voiding all warranty claims.

## STORAGE AND TRANSPORT

Keep the fire selector on the airsoft gun set to safe, with the magazine and battery removed when storing your airsoft gun. Always store your airsoft gun in a safe place and out of the reach of children. When transporting your airsoft gun make sure that it is in a designated airsoft gun case. Never brandish your airsoft gun in public.



WARNING

IT IS YOUR RESPONSIBILITY TO SAFELY STORE AND TRANSPORT YOUR AIRSOFT GUN.

---

## ORANGE TIP

Any alteration of the coloration or markings required by state and/or federal law may be deemed illegal in a court of law. All risks and responsibility of any alteration to the product will be assumed by the operators, owners and/or user of the product.



WARNING

THE ORANGE TIP DOES NOT DISTINGUISH YOUR AIRSOFT GUN AS A TOY, ALWAYS TREAT YOUR AIRSOFT GUN AS IF IT IS A REAL FIREARM.

---

## HAZARDS OF BEING MISTAKEN FOR A REAL FIREARM

Due to the nature and design of some airsoft guns, they may be mistaken as a real firearm. It is strongly advised to operate an airsoft gun in the safety and privacy of your own home, or at a legally sanctioned location or game field. Police, Peace Officers, and Law Enforcement Officers are trained to treat objects that resemble a firearm as one. In the event that you are approached by a Law Enforcement Official, completely comply with their instructions. Never point an airsoft gun at a Law Enforcement Official. Confrontation with a Law Enforcement Official may result in serious injury or death.

## ALCOHOL, MEDICATIONS AND DRUGS

Do not handle or operate your airsoft gun while under the influence of alcohol, medication, or drugs that may impair judgment.

# SPECIFICATIONS



Caliber	6mm
Overall Length	530 mm (20.9") - 615 mm (24.2")
Overall Height	180 mm (7")
Weight	2.4 kg (5.3 lbs)
Outer Barrel Length	140.7 mm (5.5")
Inner Barrel Length	155 mm
Inner Barrel Diameter	6.05 mm
Rate of Fire	20+ RPs

PERFORMANCE DETAILS ARE BASED ON U.S. SPECIFICATIONS AND CAN BE MODIFIED TO MEET THE LAWS AND REGULATIONS OF YOUR LOCAL REGION.

## PRODUCT FEATURES

GEN 2 compact carbine stock	CNC O-ring nozzle
Tool-less battery cap	Easy maintenance anchored spring guide
Quick deployment stock	Padded cylinder head
KRYTAC MK II metal alloy receiver	Relief-cut cylinder window
TR205 M-Lok hand guard	Anti-corrosion mechbox coating
Ambidextrous fire selector	Adjustable rotary hop-up
Licensed CMC trigger	Temperature and wear resistant hop-up with improved bucking for heavy weight BB
MIL-STD 1913 Picatinny top rail	KRYTAC 30K high torque motor
T-Plug with Tamiya adaptor	
8mm ball bearing mechbox	
Integrated FET system with heat sink	

# VELOCITY AND ENERGY OUTPUT CHART

Your KRYTAC product has been configured to comply with your region's energy output regulations. The table below is a reference to the energy output specifications organized by region.

Country	Max Velocity	Energy Output
Japan, Italy	85 m/s	0.73 Joules
UK	110 m/s	1.24 Joules
Argentina, Austria, Belgium, Bosnia, Brazil, Bulgaria, Canada, Chile, Croatia, Cyprus, Czech Republic, Denmark, Estonia, Finland, France, Germany, Greece, Guatemala, Herzegovina, Hong Kong, Hungary, Iceland, Israel, Latvia, Liechtenstein, Lithuania, Macedonia, Moldavia, Netherlands, New Zealand, Norway, Paraguay, Philippines, Poland, Portugal, Romania, Russia, Serbia, Slovakia, Slovenia, South Africa, South Korea, Spain, Sweden, Switzerland, Turkey, U.S.A.	120 m/s	1.45 Joules

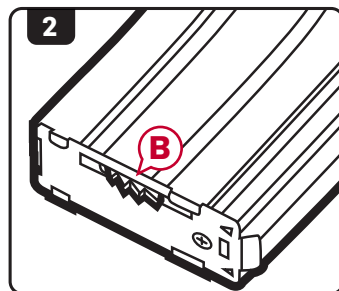
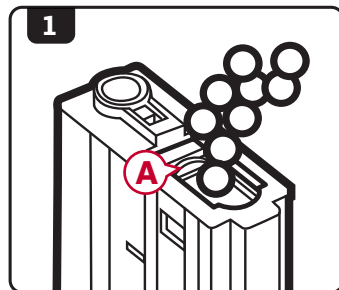
## PACKAGE CONTENTS

- [1] Trident MK II PDW-M airsoft gun
- [1] Flip-up front and rear sight set
- [1] Magazine
- [1] 2.5 mm Allen wrench
- [1] User's manual
- [1] Cleaning rod

# LOADING THE MAGAZINE

## High-Cap

1. Place the hi-cap magazine with the trap door **(A)** facing upward. Open the trap door and dispense BBs into the BB well.
2. When full, close the trap door and turn the winding wheel **(B)** forward until the 'clicking' changes tone.

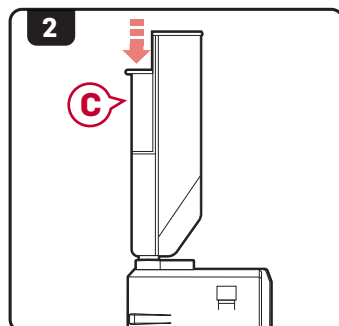
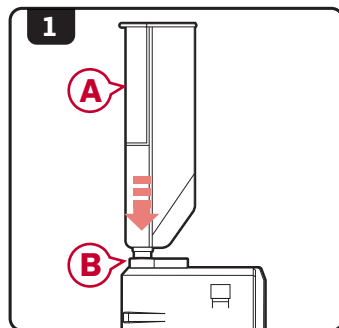


WARNING

DO NOT OVER LOAD THE  
MAGAZINE

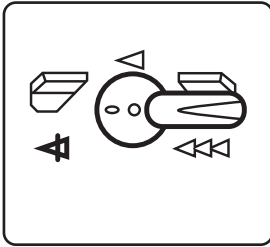
## Mid-Cap

1. Using a speed loader **(A)** or other magazine loader, insert the nozzle into the opening of the magazine **(B)**.
2. Press down on the loader plunger **(C)** to load BBs into the magazine.
3. Stop once the magazine is full, do not force more into the magazine.



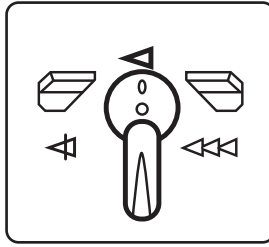
# FIRE SELECTOR SWITCH

## SAFE MODE



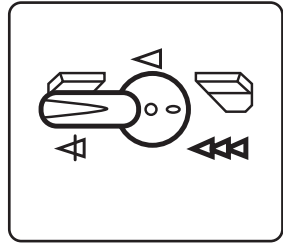
When in safe mode, the trigger will not engage and the airsoft gun will not fire.

## SEMI-AUTO MODE



While in semi-auto mode, the airsoft gun will only fire one shot for each time the trigger is engaged.

## FULL-AUTO MODE



In full-auto mode, the gun will continuously fire as long as the trigger remains engaged.

### SAFETY TIP

It is advised when you are not ready to fire, keep the fire selector switch on the airsoft gun in the safe position.

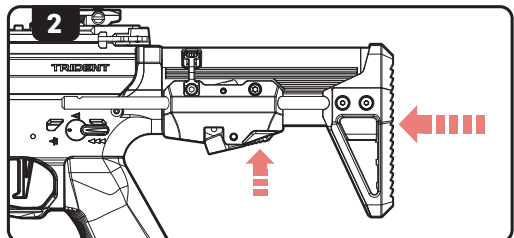
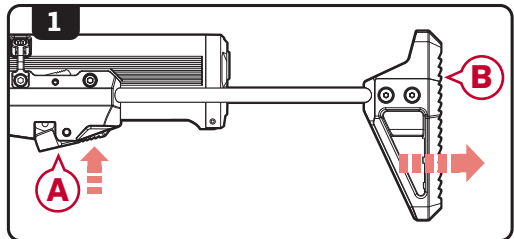


### WARNING

**DO NOT ENGAGE THE TRIGGER WHILE SWITCHING BETWEEN MODES ON THE FIRE SELECTOR.**

# GEN 2 COMPACT CARBINE STOCK

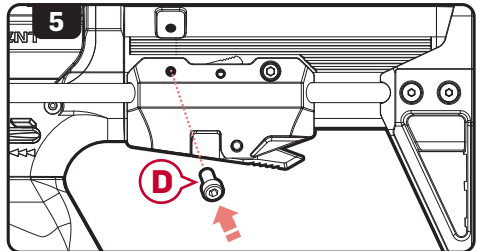
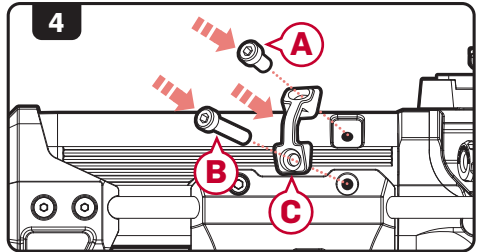
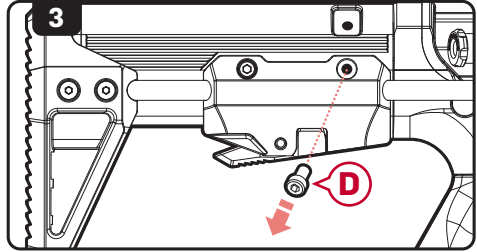
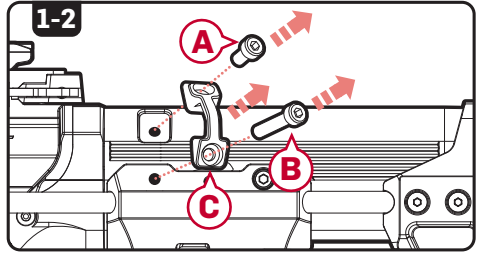
1. To extend, depress the stock release button **(A)** and pull the retractable stock **(B)** to its rear-most position.
2. To retract, depress the stock release button **(A)** and push the retractable stock **(B)** to its forward-most position.





# AMBIDEXTROUS SLING LOOP

1. Use a 3mm Allen wrench to remove the top(short) **(A)** and bottom(long) **(B)** screws from the sling loop **(C)**.
2. Remove the sling loop.
3. Use a 3mm Allen wrench to remove the screw(short) **(D)** from the other side of the stock.
4. Install the sling loop **(C)** onto the desired side of the stock using a 3mm Allen wrench. Install the top(short) **(A)** and bottom(long) **(B)** screws as shown.
5. Install the last screw **(D)** onto the stock.



# BATTERY INSTALLATION



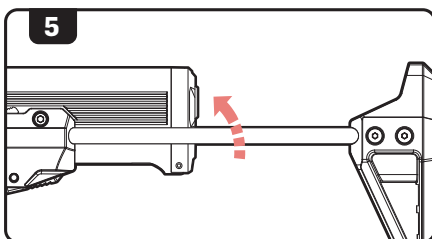
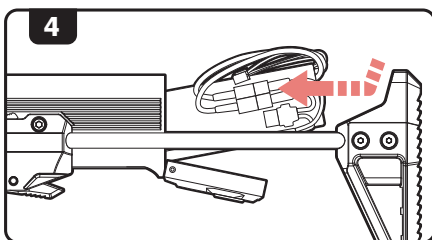
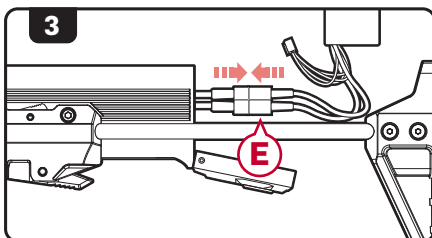
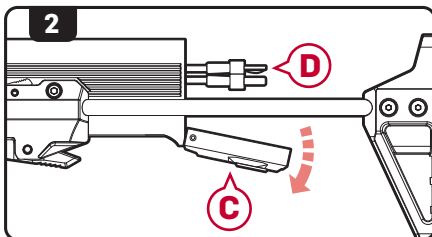
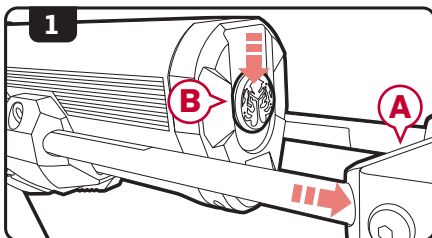
WARNING

ENSURE THAT THE STOCK IS IN THE FULLY EXTENDED POSITION BEFORE OPENING THE STOCK COVER.

1. Extend the retractable stock **(A)** fully and press down on the stock cap release button **(B)**.
2. Swing open the stock cap **(C)** to show the male T-Plug **(D)**.
3. Connect a small battery with female T-plug **(E)** to the male T-plug.
4. Curl the connection wires against the side of the battery and insert together into the stock.
5. Swing close the stock cap.

## NOTICE

If your battery utilizes mini Tamiya plug then a T-plug to Tamiya plug adapter will be necessary.



# HOP-UP SYSTEM

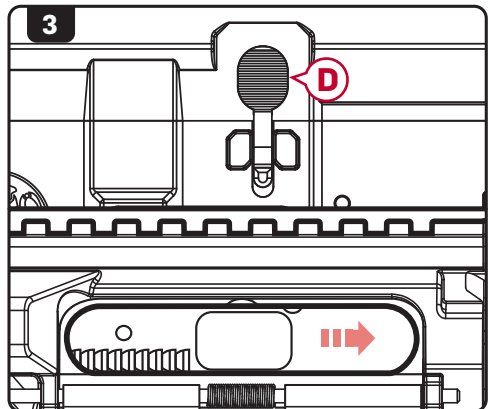
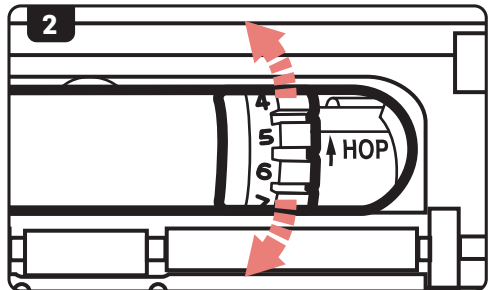
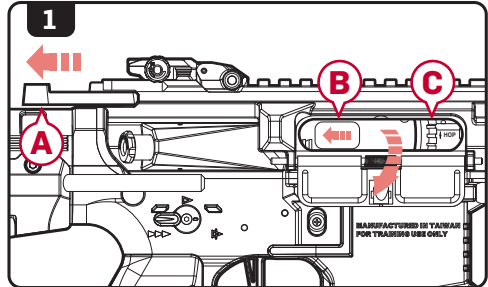
The advanced KRYTAC rotary hop-up unit is a standard feature in the Trident series AEGs. Proper adjustment of the hop-up will allow the AEGs to fire in a variety of shooting environments to obtain optimal BB trajectory.

## Hop-Up Adjustment

1. Pull the charging handle **(A)** rearward locking the bolt plate **(B)**. This will provide access to the hop-up adjustment dial **(C)**.
2. Turn the dial up or down, an audible click will confirm each adjustment.

Increasing the number on the dial will increase the amount of hop-up on the BB. Decreasing the number will lower the amount of hop-up on the BB.

3. Once the hop-up has been set, depress the bolt catch release **(D)** to return the bolt plate back to its fully seated position.



# HOP-UP SYSTEM

## Excessive Hop-Up

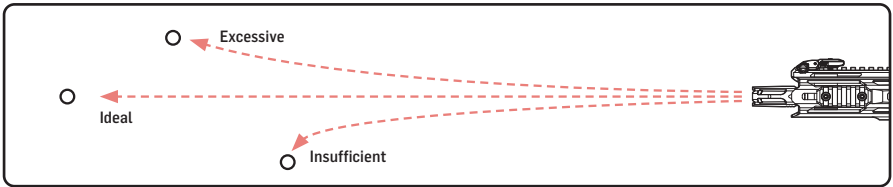
Airsoft BB travels in an extreme upward trajectory. Decrease the hop-up.

## Ideal Hop-Up

Airsoft BB travels in a long, horizontal flight path.

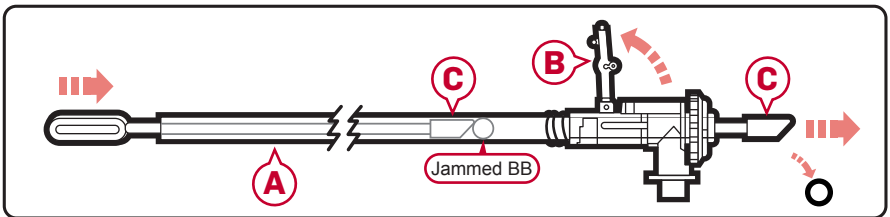
## Insufficient Hop-Up

Airsoft BB travels a short distance in a downward trajectory. Increase the hop-up.



# CLEARING JAMMED BBS

1. Disassemble the airsoft gun and remove the inner barrel assembly (A). (see pg.12 for disassembly instruction).
2. Lift the Hop-up lever (B) from the inner barrel assembly (refer to step 3 of pg.17).
3. Take the cleaning rod (C) and insert the unjamming side from the front of the barrel through to the rear to clear out the jammed BB.
4. Look through the barrel to ensure that it is cleared.
5. Reassemble the airsoft gun. (see pg.13 for assembly instruction).



## NOTE

Use only new, quality airsoft BBs. Never use recycled or low quality airsoft BBs, doing so may cause excessive jamming. In most cases, it can severely damage the internal gearbox and/or hop-up and inner barrel.

# DISASSEMBLY

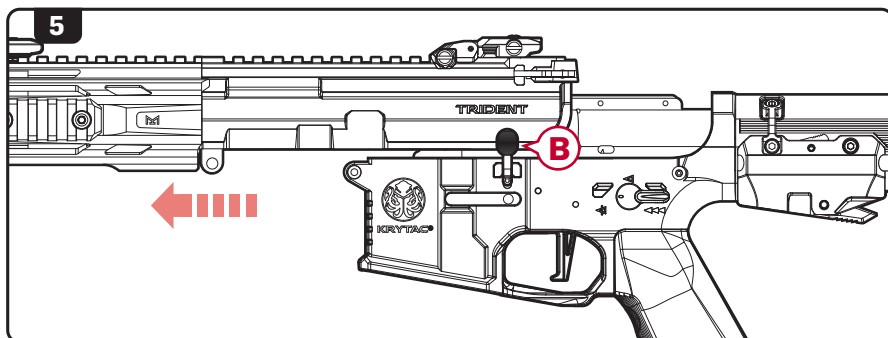
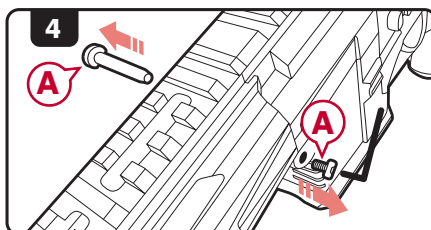
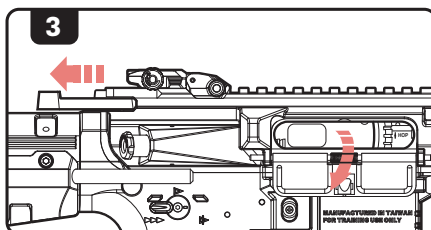
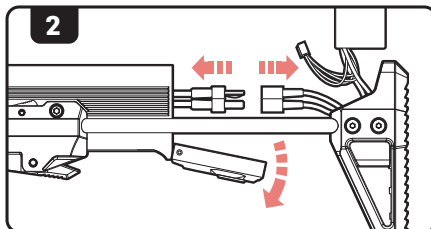
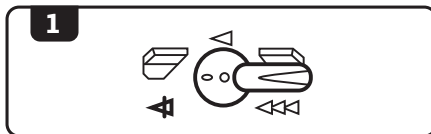
## NOTE

Before opening up the receiver, remove the magazine and fire the airsoft gun in a safe direction to ensure that the hop-up chamber is clear of any BBs.

1. Set the AEG to safe mode.
2. Open the stock cap (see pg.9 for instruction) then disconnect and remove the battery.
3. Pull the charging handle rearward to lock the bolt plate back.
4. Remove **ONLY** the front pin **(A)** from the receiver.
5. Slide the upper receiver forward and away from the lower receiver.

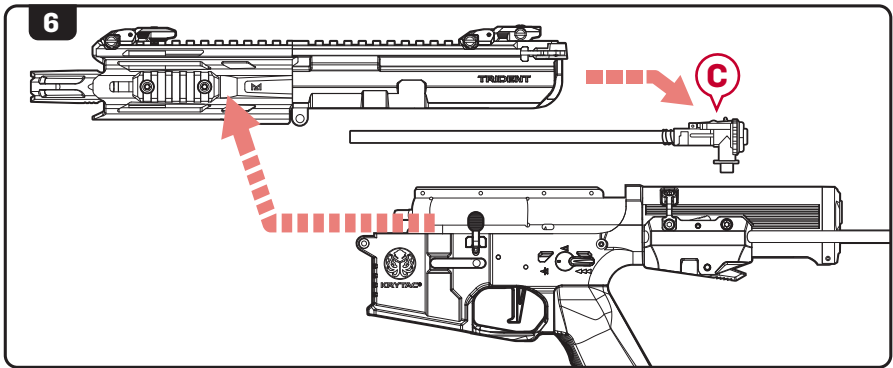
## NOTE

The bolt catch lever **(B)** may fall off of the lower receiver when separating the receivers. Avoid turning or jostling the lower receiver to help prevent loss of the bolt catch lever.



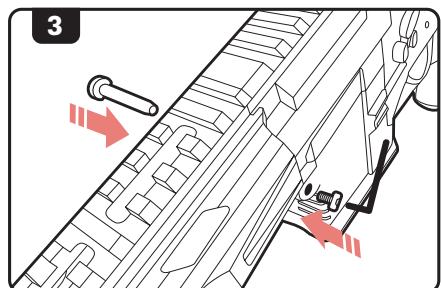
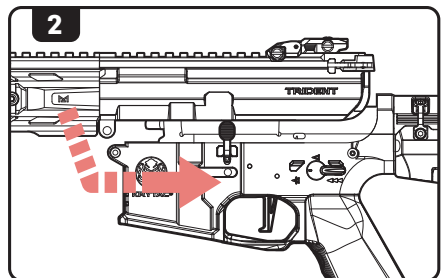
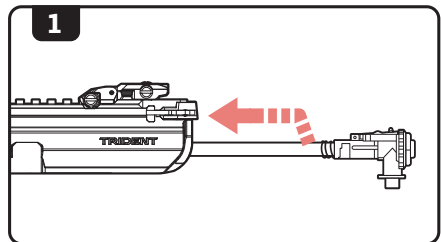
## DISASSEMBLY

6. Slide the hop-up and inner barrel assembly **C** out of the upper receiver.



## ASSEMBLY

1. Insert the hop-up and inner barrel assembly into the upper receiver.
2. Ensure that the bolt catch lever is in place, then slide the upper receiver back onto the lower receiver.
3. Reinstall and secure the front body pin.



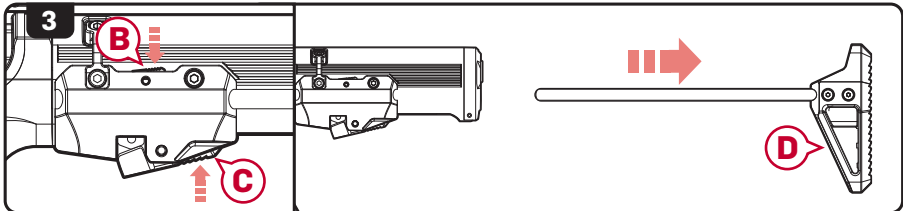
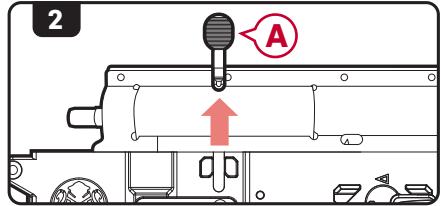
# MAIN SPRING ACCESS



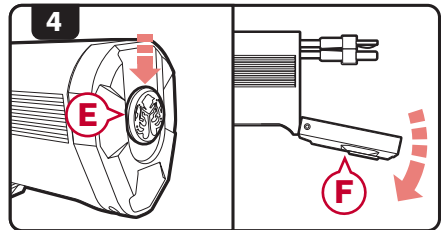
**WARNING**

PLEASE REVIEW THE WARRANTY CARD INFORMATION BEFORE OPENING AND/OR MODIFYING THE KRYTAC AIRSOFT GUN.

1. Disassemble the airsoft gun. (see pg.12 for disassembly instructions).
2. Remove the bolt release button **A**.

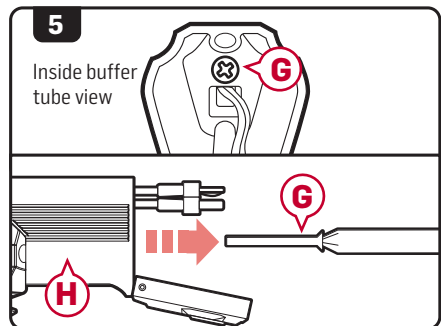


3. Press down on the take down lever **B** and the stock release button **C**. Remove the butt stock **D**.

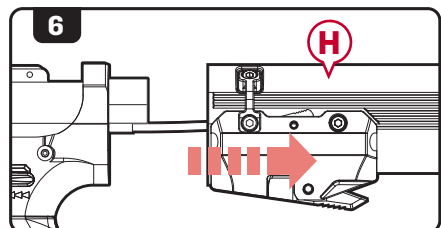


4. Press down on the stock cap release button **E** and swing open the stock cap **F**.

5. Use a Phillip (P2) screw driver to remove the screw **G** from inside the buffer tube **H**.



6. Remove the buffer tube **H**.



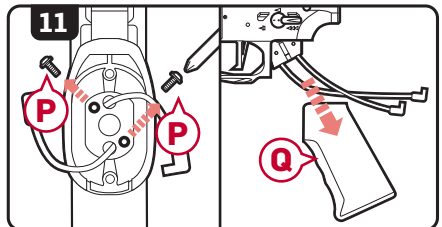
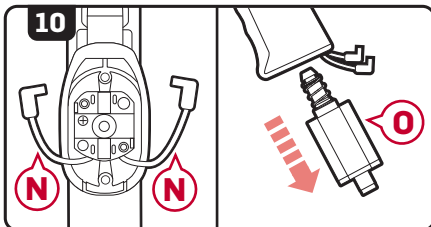
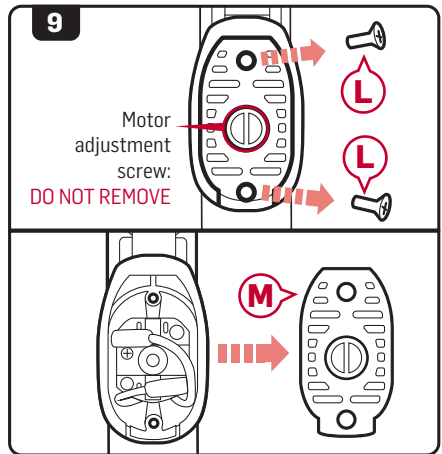
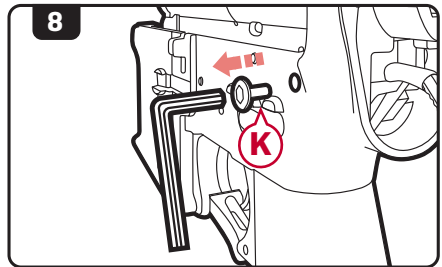
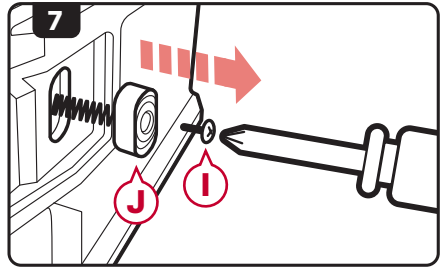
# MAIN SPRING ACCESS

7. Remove the screw **I** from the magazine release button **J** using a Phillip screw driver, then remove the magazine release button **J**.
8. Use a 3 mm hex key to remove the rear receiver pin screw **K**.
9. Use a Phillips screw driver to remove 2 screws **L** on the bottom of the motor plate **M** then remove the motor plate.
10. Disconnect the motor wires **N** and remove the motor **O**.

## NOTE

Take note of the wire and motor orientation before disconnecting.

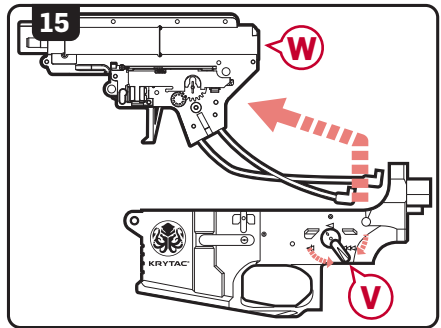
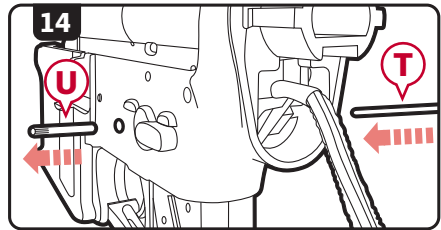
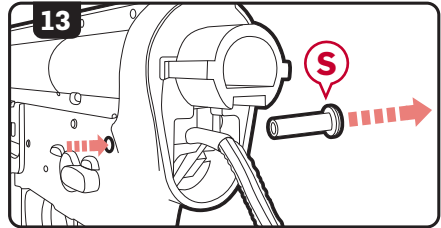
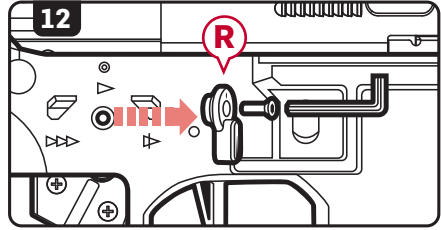
11. Remove 2 Phillips screws **P** at the top of the motor grip interior, then remove the motor grip **Q**.





# MAIN SPRING ACCESS

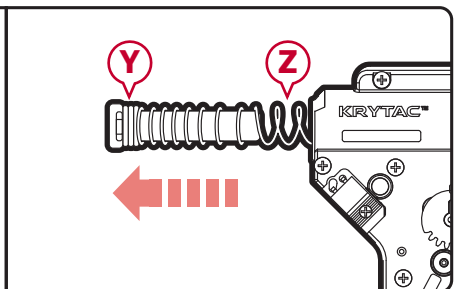
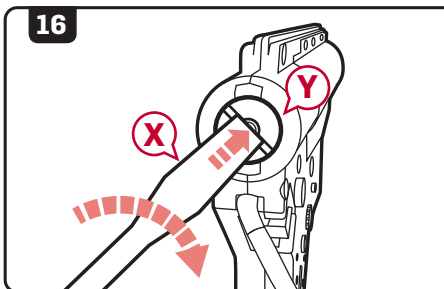
12. Remove the right side selector switch **(R)** using a 1.5 mm hex key.
13. Press the rear receiver pin **(S)** in and remove it from the other side of the airsoft gun.
14. Use a 2.5 mm punch **(T)** and press the body pin **(U)** in and remove it from the other side of the airsoft gun.
15. Move the selector switch **(V)** half way between safe mode and semi-automatic mode then slide the gearbox **(W)** out of the lower receiver.
16. Use an flathead screw driver **(X)**, push the anchored spring guide **(Y)** into the gearbox, turn 90° clockwise then pull the spring guide and spring **(Z)** out.



## NOTE

Spring guide is under extreme pressure. Remove with caution.

17. Re-insert the anchored spring guide with desired spring into gear box. Follow steps in reverse order to reassemble the airsoft gun.

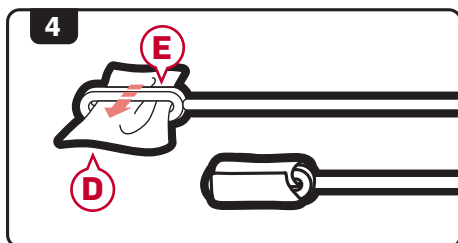
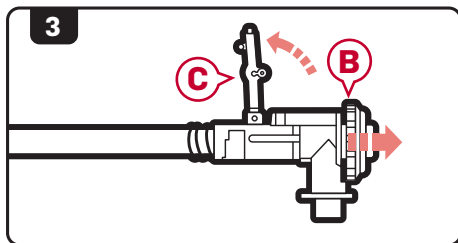
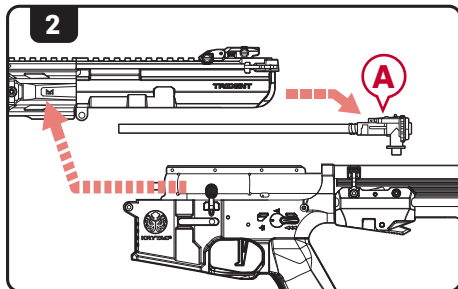
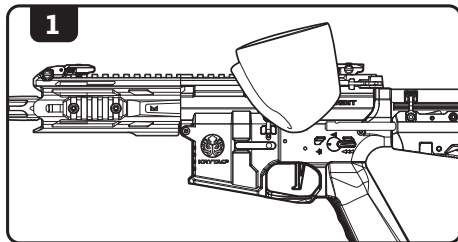


# CLEANING AND MAINTENANCE

## NOTE

WHILE POINTING THE AIRSOFT GUN IN A SAFE DIRECTION, REMOVE THE MAGAZINE AND CYCLE THE GEARBOX UNTIL NO BBS EXIT THE INNER BARREL. PLACE THE AIRSOFT GUN IN SAFE MODE AND DISCONNECT THE BATTERY PRIOR TO ANY CLEANING PROCEDURES.

1. Wipe down the external parts of the gun and remove any dirt and debris.
2. Disassemble the airsoft gun as described in the Disassembly section and pull out the barrel and hop-up assembly (A).
3. Pull back on the hop-up adjustment wheel (B) and lift the hop-up adjustment lever (C) up.
4. Take a lint-free cleaning patch (D) and place it through the looped end of the cleaning rod (E).

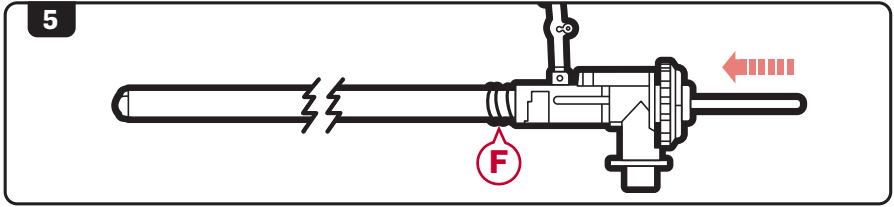


## WARNING

DO NOT ADD OIL TO THE HOP-UP BUCKING. EXCESSIVE OIL ON THE HOP-UP BUCKING MAY NEGATE THE HOP-UP, DECREASING RANGE AND ACCURACY.

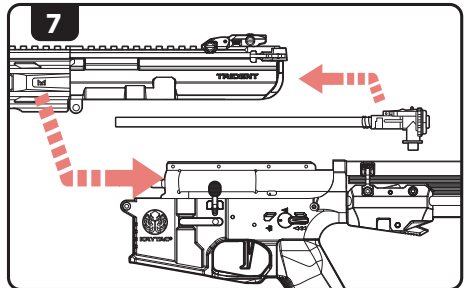
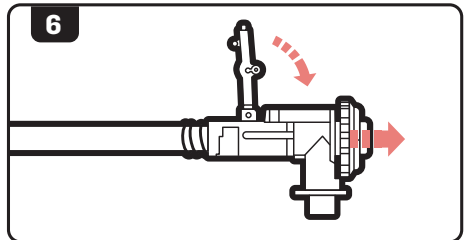
# CLEANING AND MAINTENANCE

5. Run the cleaning rod through the barrel from back to front (in the same direction that BBs travel).



KEEP TRACK OF THE BARREL SPRING (F), IT CAN SEPARATE FROM THE BARREL ASSEMBLY.

6. Pull back on the hop-up adjustment wheel and lower the hop-up adjustment lever back into position.
7. Reinsert the hop-up barrel assembly into the receiver and reassemble as described in the Assembly section.



# TROUBLESHOOTING GUIDE



**WARNING**

**WHEN TROUBLESHOOTING, FOLLOW THE SAFETY MEASURES DESCRIBED IN THIS MANUAL.**

<b>SYMPTOMS</b>	<b>CAUSE</b>	<b>SOLUTIONS</b>
Not firing/No sound	Safety is engaged	Change selector to Semi Auto or Full Automatic Mode
	Low power or dead battery	Charge and replace battery
	Blown out fuse	Replace with new fuse
	Loose connection	Contact customer service for professional care
Motor is running but not firing	Inspect magazine	Check if magazine is properly loaded into the gun Ensure magazine is loaded with ammunition Ensure the hi-cap magazine is properly wound
Motor or battery is hot after short use	Damaged battery	Inspect and/or replace battery
	Loose connection terminal	Contact customer service for professional care
Semi-Auto feature not functioning properly	Battery voltage or discharge is too high	Condition or replace battery
Semi-Auto feature not working at all	Disconnecter is not engaged properly	Reset the disconnecter by setting the selector to safe, then to automatic, then to semi
Firing cycle slowing down	Battery is low on power	Charge or replace battery
High pitch or grinding noise	Motor level is not adjusted properly	Contact customer service for professional care
BB travels upward	Hop-up adjusted too high	Dial down the hop-up adjustment
BB travels downward	Hop-up adjusted too low	Dial up the hop-up adjustment
BB double feeding or rolling out of the barrel	Excessive grease or oil in the hopup chamber	Fire at least 200 rounds to eliminate excessive grease from the chamber Clean hop-up unit with supplied cleaning rod
	Hop-up unit is turned off	Turn hop-up unit on
Hop-up unit can't be adjusted	Hop-up adjustment arm is not set properly	Reset hop-up adjustment arm (See page 18, step 6 for reassembly)
Inner barrel is jammed or jamming	Use of recycled or low quality BBs	Use only KRYTAC branded or other high quality BBs
	Inner Barrel is contaminated with BBs or debris	Clear and/or clean inner barrel with supplied cleaning rod (See page 11 for clearing jam section and page 17 for cleaning and maintenance section)
Hi-Cap magazine not feeding	Magazine has not been wound	Wind wheel underneath magazine
	BBs are lodged inside the magazine	Shake or tap magazine to clear the jam
	Internal obstruction	Contact customer service for professional care

## **OPERATING UNDER HARSH CONDITIONS**

---

When operating under harsh conditions, special maintenance may be required to match the climate conditions of a specific operational area.

### **Dust and Sand**

In harsh dusty or sandy environments, excessive debris can cause malfunctions and/or excessive wear on parts. Keep the gun covered and protected while not in use. When performing maintenance, use lubrication sparingly as it tends to attract dirt and other particles. After use in a dusty or sandy area, always field strip the gun, as outlined in the Disassembly section, cleaning all the areas that can be reached with a soft, clean, lint-free cloth.

### **Heavy Rain**

Never submerge or expose your gun to extremely wet environments. Exposure to such conditions may cause electrical failure and fluid to build-up inside the gearbox. Dry completely with a clean, lint-free cloth and clean inner barrel when necessary.

## **HEARING PROTECTION REQUIREMENT**

---

### **HEARING PROTECTION REQUIREMENT FOR EUROPEAN COMMUNITY**

The KRYTAC TRIDENT MK II PDW-M fulfills all relevant provisions of:

EMC Directive (2014/30/EU)  
RoHS Directive (2011/65/EU)  
General Product Safety Directive (2001/95/EC)

In conjunction with the following harmonized standards or technical specifications for the design and manufacture

EN 50581:2012; EN 55014-1:2006; EN 55014-2:1997

In accordance with the above mentioned standards, in some applications, noise or vibration levels may exceed the minimum Noise levels of 85db(A). If Noise levels exceed 85dB(A), appropriate ear protection must be used to prevent any damages due to sound emissions.

## **CONTACT INFORMATION**

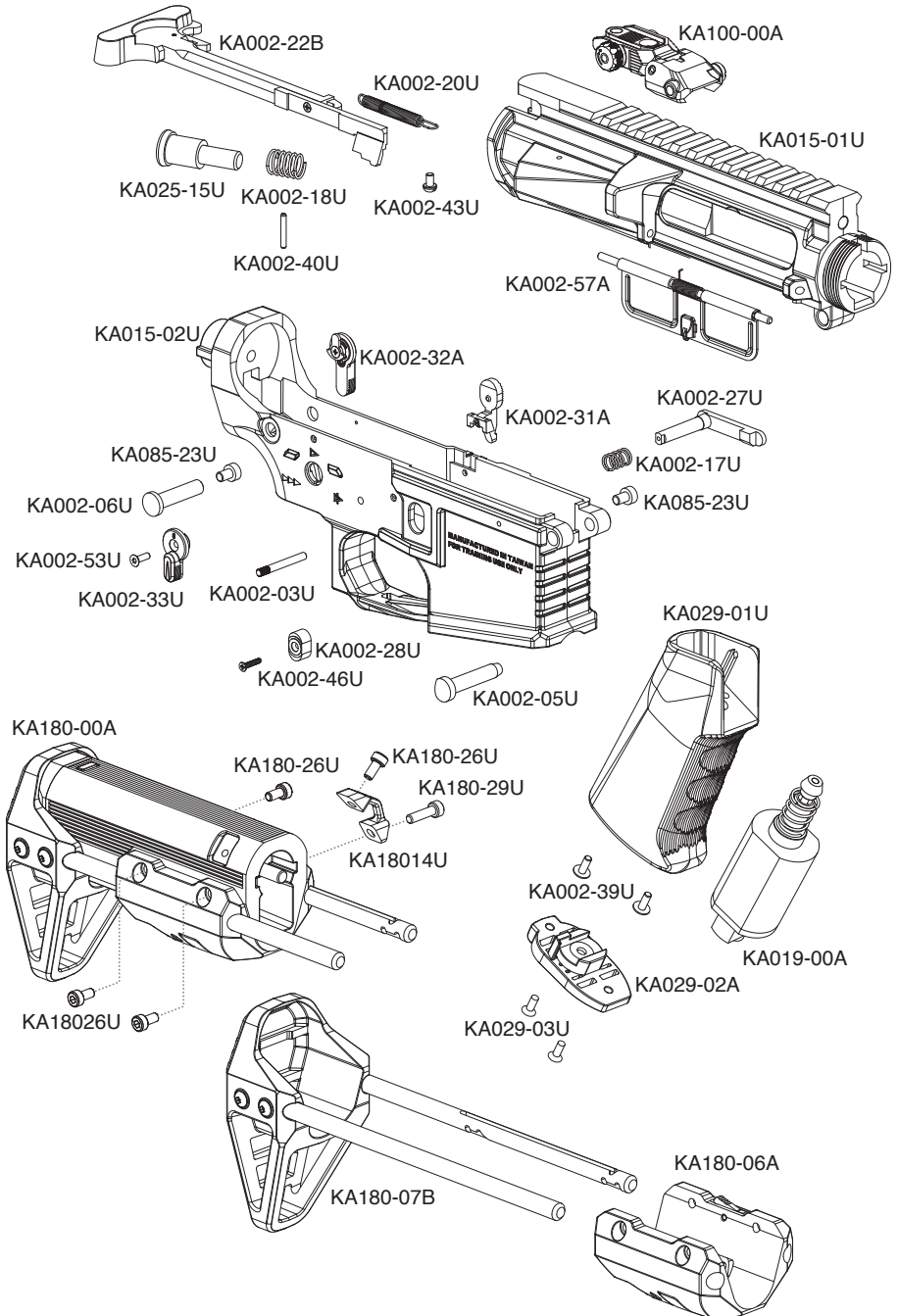
---

**Submit a contact form at: [www.krytac.com](http://www.krytac.com)**

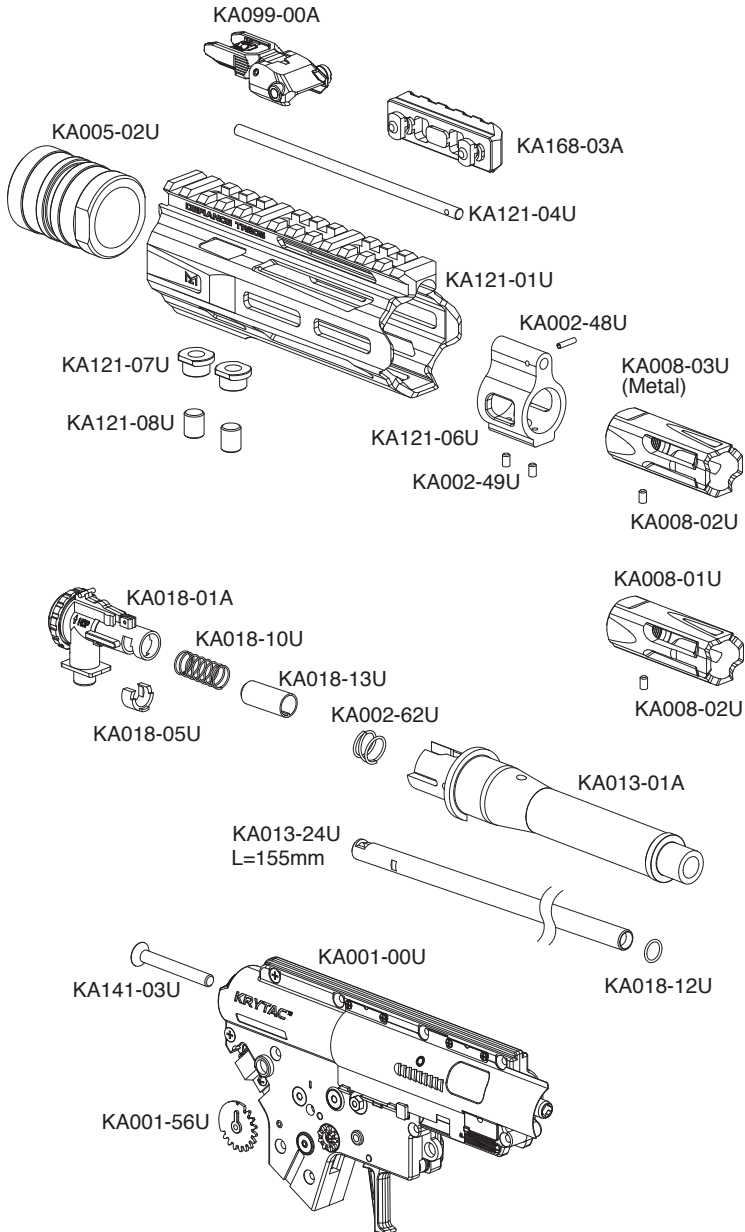
**Email us at: [support@krytac.com](mailto:support@krytac.com)**

Join the KRYTAC Community and visit <http://forums.krytac.com> for any additional technical questions and information about your KRYTAC.

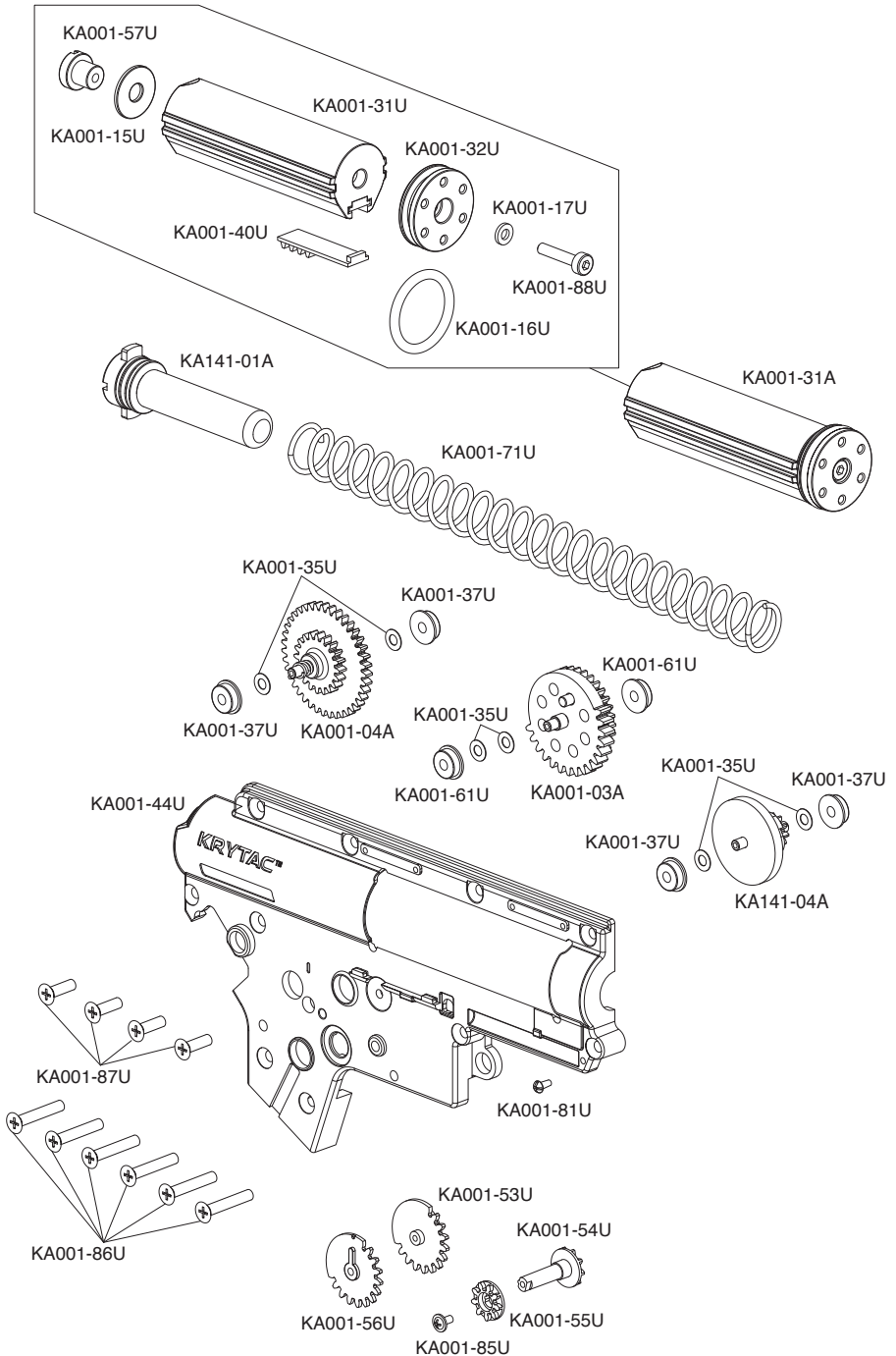
# COMPONENT DIAGRAM: PDW-M



# COMPONENT DIAGRAM: PDW-M

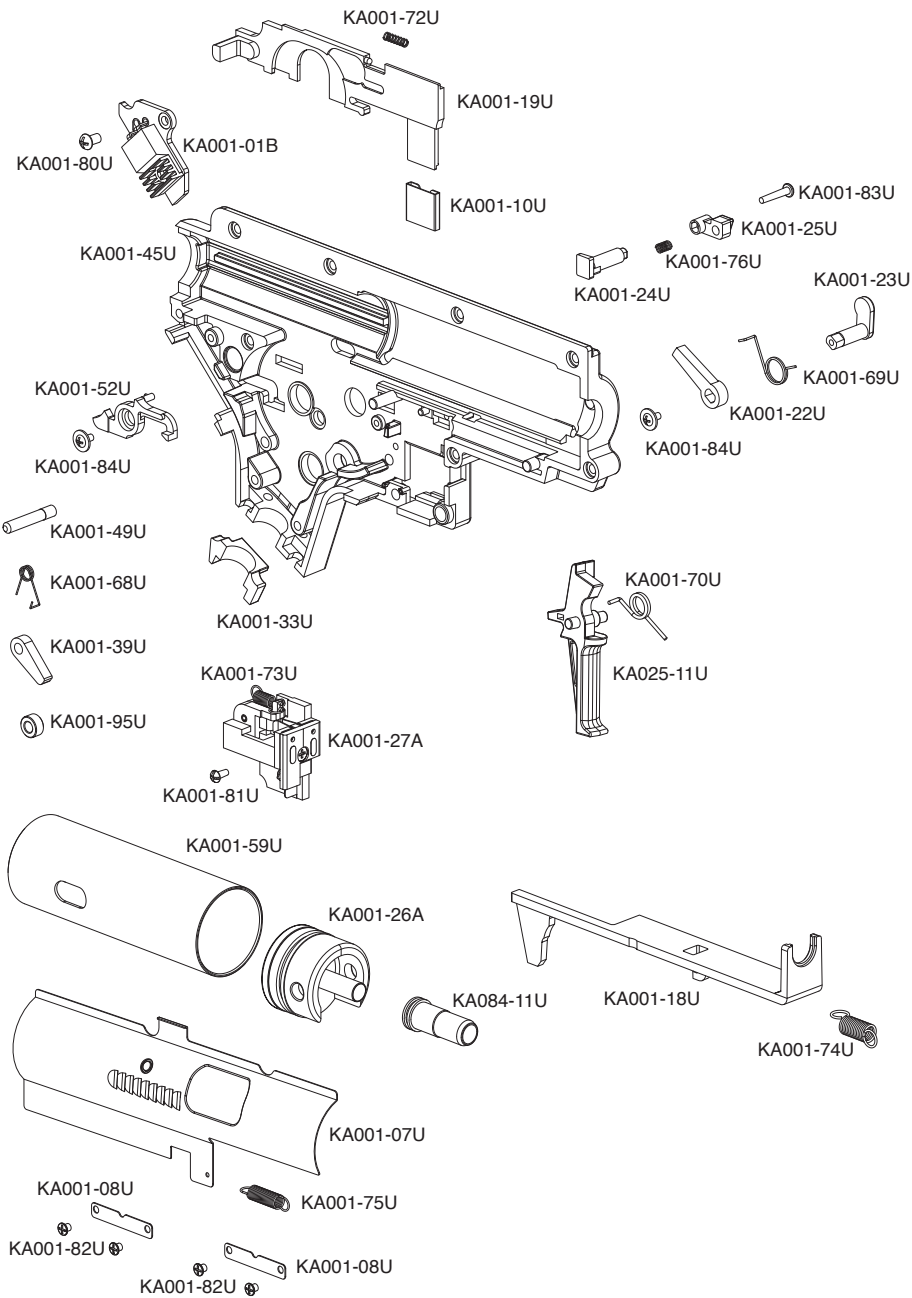


# COMPONENT DIAGRAM: GEARBOX





# COMPONENT DIAGRAM: GEARBOX



# COMPONENT LIST: MK II PDW-M

PART #	NAME		
		KA001-56U	SELECTOR GEAR (RIGHT)
KA001-00U	GEARBOX ASSEMBLY	KA001-57U	PISTON HEAD NUT
KA001-01B	MOSFET ASSEMBLY	KA001-59U	CYLINDER
KA001-03A	SECTOR GEAR	KA001-61U	SECTOR GEAR SPACER
KA001-04A	SPUR GEAR	KA001-68U	ANTI-REVERSE LATCH SPRING
KA001-07U	BOLT PLATE	KA001-69U	SAFETY BLOCK SPRING
KA001-08U	BOLT PLATE GUIDE	KA001-70U	TRIGGER SPRING
KA001-10U	CONTACT (SELECTOR)	KA001-71U	MAIN SPRING
KA001-15U	MAIN SPRING SHIM	KA001-72U	DISCONNECT SPRING
KA001-16U	PISTON HEAD O-RING	KA001-73U	SWITCH SPRING
KA001-17U	PISTON HEAD SHIM	KA001-74U	TAPPET PLATE SPRING
KA001-18U	TAPPET PLATE	KA001-75U	BOLT RETURN SPRING
KA001-19U	SELECTOR PLATE	KA001-76U	BOLT PLATE LOCK SPRING
KA001-22U	SAFETY BLOCK	KA001-80U	MOSFET SCREW
KA001-23U	SAFETY BLOCK LEVER	KA001-81U	BUTTON MICRO SCREW
KA001-24U	BOLT PLATE LOCK	KA001-82U	BOLT PLATE SCREW (4)
KA001-25U	BOLT PLATE LOCK BUTTON	KA001-83U	BOLT PLATE LOCK SCREW
KA001-26A	CYLINDER HEAD ASSEMBLY	KA001-84U	FLAT MICRO SCREW (2)
KA001-27A	SWITCH ASSEMBLY	KA001-85U	SELECTOR TRANSFER GEAR SCREW
KA001-31A	PISTON ASSEMBLY		
KA001-31U	PISTON BODY	KA001-86U	GEARBOX SHELL SCREW (LONG)(6)
KA001-32U	PISTON HEAD		
KA001-33U	WIRING COVER	KA001-87U	GEARBOX SHELL SCREW (SHORT)(4)
KA001-35U	SHIM (6)	KA001-88U	PISTON HEAD SCREW
KA001-37U	BEARING (4)		
KA001-39U	ANTI-REVERSE LATCH	KA001-95U	ANTI-RELEASE LATCH BUSHING
KA001-40U	PISTON TOOTH RACK		
KA001-44U	GEARBOX SHELL (RIGHT)	KA002-03U	GEARBOX PIN
KA001-45U	GEARBOX SHELL (LEFT)	KA002-05U	FRONT RECEIVER PIN
KA001-49U	ANTI-REVERSE LATCH PIN	KA002-06U	REAR RECEIVER PIN
KA001-52U	DISCONNECT LEVER	KA002-17U	MAGAZINE RELEASE SPRING
KA001-53U	SELECTOR GEAR (LEFT)	KA002-18U	FORWARD ASSIST SPRING
KA001-54U	SELECTOR TRANSFER AXIS GEAR	KA002-20U	CHARGING HANDLE SPRING
		KA002-22A	CHARGING HANDLE ASSEMBLY
KA001-55U	SELECTOR TRANSFER CAP GEAR	KA002-27U	MAGAZINE RELEASE
		KA002-28U	MAGAZINE RELEASE BUTTON

# COMPONENT LIST: MK II PDW-M

KA002-31A	BOLT STOP ASSEMBLY	KA099-00A	FRONT FLIP-UP SIGHT
KA002-32A	LEFT SELECTOR ASSEMBLY	KA100-00A	REAR FLIP-UP SIGHT
KA002-33U	RIGHT SELECTOR	KA121-01U	RAIL
KA002-39U	PISTOL GRIP SCREW (2)	KA121-04U	PDW-M GAS TUBE
KA002-40U	FORWARD ASSIST PIN	KA121-06U	GAS BLOCK
KA002-43U	CHARGING HANDLE ANCHOR SCREW	KA121-07U	RETENSION NUT (2)
KA002-46U	MAGAZINE RELEASE SCREW	KA121-08U	RETENSION SCREW (2)
KA002-48U	GAS BLOCK PIN	KA141-01A	SPRING GUIDE ASSEMBLY
KA002-49U	GAS BLOCK SCREWS (2)	KA141-03U	BUFFER TUBE SCREW
KA002-53U	RIGHT SELECTOR SCREW	KA141-04A	BEVEL GEAR
KA002-57A	DUST COVER ASSEMBLY	KA168-03A	M-LOK SIDE RAIL (SHORT)
KA002-62U	HOP-UP OUTER TENSION SPRING	KA180-00A	COMPACT CARBINE STOCK (GEN 2)
KA005-02U	BARREL NUT	KA180-06A	STOCK BODY
KA008-01U	FLASH HIDER	KA180-07B	BUTT STOCK
KA008-02U	SET SCREW	KA180-14U	SLING MOUNT
KA008-03U	FLASH HIDER (METAL)	KA180-26U	STOCK BODY SCREW (4)
KA013-01A	PDW OUTER BARREL	KA180-29U	SLING MOUNT SCREW
KA013-24U	INNER BARREL (155MM)		
KA015-01A	UPPER RECEIVER ASSEMBLY		
KA015-01U	UPPER RECEIVER		
KA015-02U	LOWER RECEIVER		
KA018-01A	HOP-UP UNIT ASSEMBLY		
KA018-05U	BARREL CLIP		
KA018-10U	TENSION SPRING		
KA018-12U	FRONT BARREL O-RING		
KA018-13U	BUCKING		
KA019-00A	MOTOR		
KA025-11U	TRIGGER		
KA025-15U	FORWARD ASSIST SPRING		
KA029-01U	PISTOL GRIP		
KA029-02A	MOTOR PLATE ASSEMBLY		
KA029-03U	MOTOR PLATE SCREW (2)		
KA084-11U	AIR NOZZLE		
KA085-23U	RECEIVER PIN CAP SCREW (2)		

[www.krytac.com](http://www.krytac.com)

© Copyright 2019  
KRISS INDUSTRIES ASIA  
Subject to change

V.02 R.2020.10.05

