



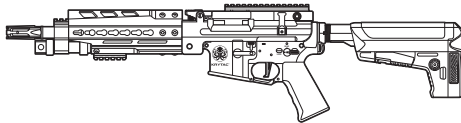
**KRYTAC®**

OWNER'S MANUAL

**TRIDENT**

LMG

Enhanced



# TABLE OF CONTENTS

---

Safety Rules .....	2
Specifications .....	4
Package Contents .....	4
Velocity and Energy Output Chart .....	5
Using the Box Magazine.....	6
Fire Selector Switch.....	7
Battery Installation .....	8
Hop-Up System .....	9
Clearing Jammed BBs.....	10
Disassembly .....	11
Assembly .....	12
Main Spring Access .....	13
Cleaning and Maintenance.....	16
Operating Under Harsh Conditions .....	18
Trouble Shooting Guide.....	19
Hearing Protection Requirement.....	19
Contact Information .....	20
Component Diagrams and Lists .....	21



**WARNING**

THIS PRODUCT IS NOT INTENDED FOR USE BY UNTRAINED PERSONS (INCLUDING CHILDREN) WITH OR WITHOUT PHYSICAL OR MENTAL HANDICAPS. THESE HANDICAPS INCLUDE REDUCED PHYSICAL, SENSORY OR MENTAL CAPABILITIES, OR LACK OF EXPERIENCE AND KNOWLEDGE OF THE PRODUCT AND SAFETY GUIDELINES. ALL USERS SHOULD HAVE TRAINED SUPERVISION OR INSTRUCTIONS CONCERNING THE USE OF THE APPLIANCE BY A PERSON RESPONSIBLE FOR HIS OR HER SAFETY.

---

# SAFETY RULES

---

Please read the entire KRYTAC manual before operating the airsoft gun. This manual covers important safety, operational, and maintenance topics. It is important that the user reads and understands the manual in order to safely handle and operate the airsoft gun. Failure to follow the safety guidelines and/or operational instructions in this manual may result in serious personal injury or damage to the airsoft gun.

## Safety Guidelines

---

### EYE PROTECTION

Always wear eye protection while shooting, operating, and maintaining your airsoft guns.

### FIREARM SAFETY RULES

**Always assume that the airsoft gun is loaded.** Never assume the chamber is empty based on memory or from someone else's word. An airsoft gun can still fire with the magazine removed.

### KEEP YOUR FINGER OFF THE TRIGGER

Remove your finger from the inside of the trigger guard until your sights are aligned on target and you are ready to fire.

### MUZZLE CONTROL

Always keep the muzzle of the airsoft gun pointed in a safe direction. Never point the airsoft gun towards anything you do not intend to shoot.

### KNOW YOUR TARGET AND ITS SURROUNDINGS (SAFETY DISTANCE)

Take note of objects in front of and beyond your target. Airsoft guns can shoot up to and beyond 150 feet/45 meter and may travel further than intended without an adequate backstop. Never shoot an airsoft gun directly at targets such as rocks, glass, water, or other hard surfaces that may ricochet BBs in unpredictable directions.



**WARNING**

## SAFETY IS YOUR RESPONSIBILITY

---

The KRYTAC airsoft gun is designed and manufactured to KRYTAC's high standards. It was carefully inspected before it was packaged and shipped from our factory. It is the sole responsibility of the user for its safe use and handling. This airsoft gun is safe unless handled irresponsibly or misused.

### BEWARE OF BARREL OBSTRUCTIONS

Ensure that the barrel of your airsoft gun is free and clear of any obstructions prior to firing the airsoft gun. Failure to do so may cause a malfunction, and in some cases damage the airsoft gun.

### KEEP THE SAFETY ON

Keep the fire selector set to safe until your sights are aligned on target and you are ready to fire.

# SAFETY RULES

---

## FAILURE TO FIRE

If the airsoft gun fails to fire, misfires, or malfunctions, do not look into/down the barrel of the airsoft gun. BBs can jam in the chamber and can launch suddenly while under pressure causing serious injury.

## FUSE

DO NOT REMOVE OR BYPASS THE FUSE. It is an integral part of the system. Alterations to the fuse will void warranty and may result in operational failure and critical damage to internal components.

## MAINTAIN YOUR AIRSOFT GUN PROPERLY

Maintaining your airsoft gun as outlined in the manual ensures that your airsoft gun will be safe to shoot and perform to its designed specifications. Alterations, modifications, or adjustments may damage your airsoft gun, making it unsafe to shoot and/or voiding all warranty claims.

## STORAGE AND TRANSPORT

Keep the fire selector on the airsoft gun set to safe, with the magazine and battery removed when storing your airsoft gun. Always store your airsoft gun in a safe place and out of the reach of children. When transporting your airsoft gun make sure that it is in a designated airsoft gun case. Never brandish your airsoft gun in public.



WARNING

IT IS YOUR RESPONSIBILITY TO SAFELY STORE AND TRANSPORT YOUR AIRSOFT GUN.

---

## ORANGE TIP

Any alteration of the coloration or markings required by state and/or federal law may be deemed illegal in a court of law. All risks and responsibility of any alteration to the product will be assumed by the operators, owners and/or user of the product.



WARNING

THE ORANGE TIP DOES NOT DISTINGUISH YOUR AIRSOFT GUN AS A TOY, ALWAYS TREAT YOUR AIRSOFT GUN AS IF IT IS A REAL FIREARM.

---

## HAZARDS OF BEING MISTAKEN FOR A REAL FIREARM

Due to the nature and design of some airsoft guns, they may be mistaken as a real firearm. It is strongly advised to operate an airsoft gun in the safety and privacy of your own home, or at a legally sanctioned location or game field. Police, Peace Officers, and Law Enforcement Officers are trained to treat objects that resemble a firearm as one. In the event that you are approached by a Law Enforcement Official, completely comply with their instructions. Never point an airsoft gun at a Law Enforcement Official. Confrontation with a Law Enforcement Official may result in serious injury or death.

## ALCOHOL, MEDICATIONS AND DRUGS

Do not handle or operate your airsoft gun while under the influence of alcohol, medication, or drugs that may impair judgment.

# SPECIFICATIONS



Caliber	6mm
Overall Length	750 mm (29.5") - 835 mm (32.9")
Overall Height	200 mm (7.9")
Weight	3.5 kg (7.8 lbs)
Outer Barrel Length	228.9 mm (9")
Inner Barrel Length	310 mm
Inner Barrel Diameter	6.05 mm
Rate of Fire	20+ RPS

PERFORMANCE DETAILS ARE BASED ON U.S. SPECIFICATIONS AND CAN BE MODIFIED TO MEET THE LAWS AND REGULATIONS OF YOUR LOCAL REGION.

## PRODUCT FEATURES

KRYTAC metal alloy receiver  
KRYTAC LMG keymod hand guard  
KRISS pistol grip  
KRYTAC battery stock  
KRYTAC 6-position buffer tube  
Ambidextrous fire selector  
MIL-STD 1913 Picatinny top rail

Integrated FET system  
Easy maintenance spring guide  
Padded cylinder head  
Relief-cut cylinder window  
Anti-corrosion mechbox coating  
Adjustable rotary hop-up  
KRYTAC 30K high torque motor

## PACKAGE CONTENTS

[1] Trident LMG Enhanced airsoft gun  
[1] Box magazine

[1] User's manual  
[1] Cleaning rod

# VELOCITY AND ENERGY OUTPUT CHART

Your KRYTAC product has been configured to comply with your region's energy output regulations. The table below is a reference to the energy output specifications organized by region.

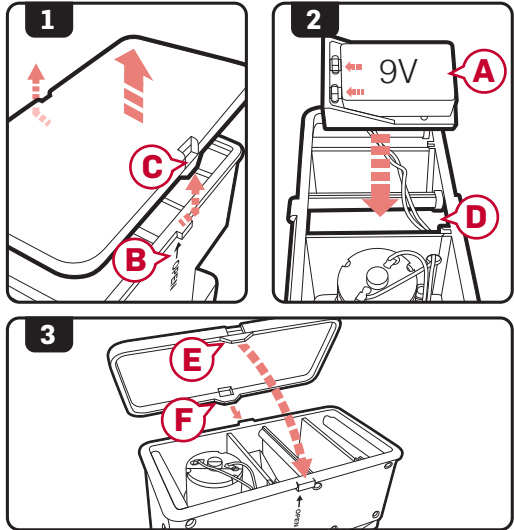
Country	Max Velocity	Energy Output
Japan, Italy	85 m/s	0.73 Joules
UK	110 m/s	1.24 Joules
Austria, Belgium, Bosnia, Brazil, Bulgaria, Canada, Chile, Croatia, Cyprus, Czech Republic, Denmark, Estonia, Finland, France, Germany, Greece, Guatemala, Herzegovina, Hong Kong, Hungary, Iceland, Israel, Latvia, Liechtenstein, Lithuania, Macedonia, Moldavia, Netherlands, New Zealand, Norway, Paraguay, Philippines, Poland, Portugal, Romania, Russia, Serbia, Slovakia, Slovenia, South Africa, South Korea, Spain, Sweden, Switzerland, Turkey, U.S.A.	120 m/s	1.45 Joules

# USING THE BOX MAGAZINE

## Attaching Battery to the Box Magazine

**NOTE** The Krytac LMG Box Magazine operates from a single 9 volt battery **(A)** (not included). Install the battery prior to loading the box magazine with BBs.

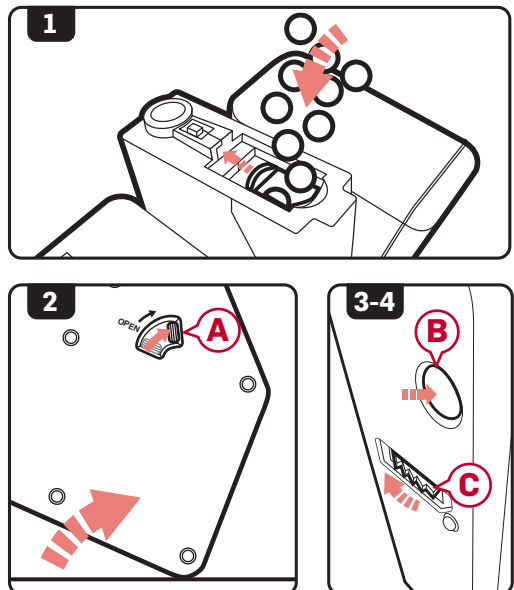
1. Follow the “Open” arrow **(B)** on the back to the locking tab **(C)** and lift the tab up and over to remove the panel.
2. Connect a single 9 volt battery and place into the battery cavity **(D)** in the magazine.
3. Replace the side panel by placing the front locking tab **(E)** on first then secure with the last locking tab **(F)**.



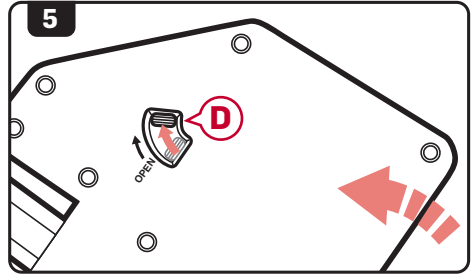
**DISCONNECT THE BATTERY WHEN THE MAGAZINE IS NOT IN USE**

## Loading the Box Magazine

1. Open the door on the top of the box magazine. Pour BBs into the opening until full.
2. Push up the reserve latch **(A)** on the back of the magazine and tilt. This will allow more loading space.
3. Press the loading button **(B)** at the bottom of the magazine until the magazine clicks. The magazine is now ready and loaded.
4. Between shooting, rewind the magazine spring by pressing the button **(B)** or turning the wheel **(C)**. This will ensure a ready magazine.



5. When the main reservoir is empty, turn the magazine sideways and open the reserve latch **D** to load more BBs.



**WARNING**

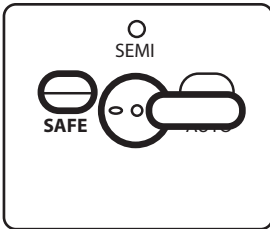
**ALWAYS UNLOAD  
MAGAZINE PRIOR  
TO STORAGE TO  
PRESERVE SPRING  
LIFE.**

## Troubleshooting: If no BBs are feeding from the box magazine

1. No noise from the box magazine motor.
  - a. Check to see that the battery is properly connected.
  - b. Check to ensure that the battery still has power. If not replace the battery.
2. Makes a noise but does not seem to feed.
  - a. Press the winding button on the bottom of the magazine again to add more tension to the follower.
  - b. Ensure that there are BB's in the main reservoir. If not, load more BB's into the main reservoir from the secondary reservoir or through the BB door.
  - c. The magazine may have an obstruction and will require servicing.

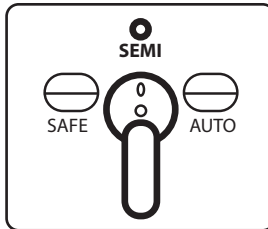
## FIRE SELECTOR SWITCH

### SAFE MODE



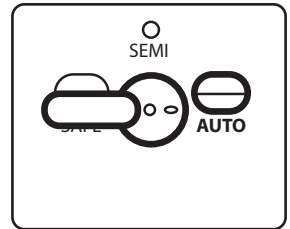
When in safe mode, the trigger will not engage and the airsoft gun will not fire.

### SEMI-AUTO MODE



While in semi-auto mode, the airsoft gun will only fire one shot for each time the trigger is engaged.

### FULL-AUTO MODE



In full-auto mode, the gun will continuously fire as long as the trigger remains engaged.

**SAFETY  
TIP**

It is advised when you are not ready to fire, keep the fire selector switch on the airsoft gun in the safe position.



**WARNING**

**DO NOT ENGAGE THE TRIGGER WHILE SWITCHING BETWEEN MODES ON THE FIRE SELECTOR.**

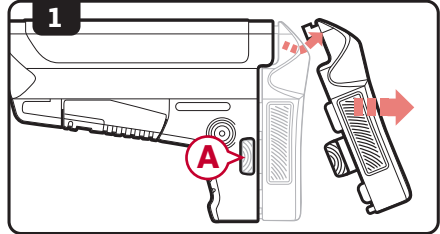


# BATTERY INSTALLATION

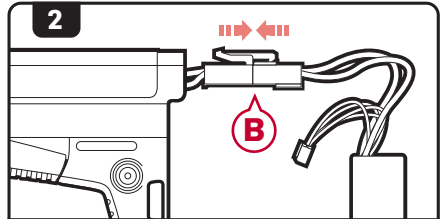


**ENSURE THAT THE STOCK IS IN THE FULLY COLLAPSED POSITION BEFORE OPENING THE STOCK COVER. DO NOT REMOVE THE STOCK COMPLETELY FROM THE GUN.**

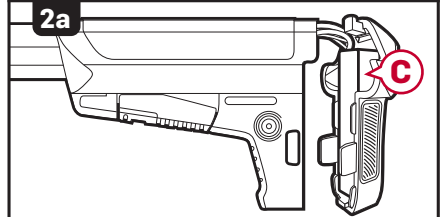
1. Set the fire selector to safe mode and depress the stock cover release button **(A)** on both sides of the stock to lift and remove the cover.



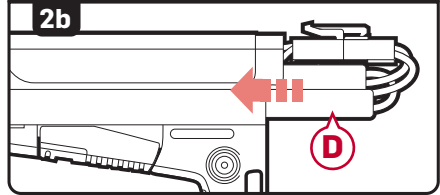
2. Connect either a nunchuck battery or small LiPo battery to the connector and place the battery into the stock. Push the connector plugs **(B)** together firmly until they lock into place.



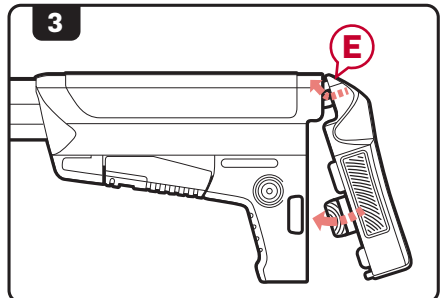
a. Place the small LiPo battery **(C)** so that it rests at the rear of the stock.



b. Place the nunchuck style batteries **(D)** down either side of the battery tubes found on the sides of the stock.



3. Replace the stock cover by first placing the tab **(E)** of the cover into the stock and then rocking the stock cover down into position. Ensure that the stock cover release buttons snap securely into place.



**WARNING**

**EXCESSIVE PULLING OR TUGGING OF THE BATTERY WIRES WHEN INSERTING OR REMOVING THE BATTERY CAN CAUSE THE FUSE HOUSING TO COME LOOSE OR DAMAGE TO THE GUN.**

# HOP-UP SYSTEM

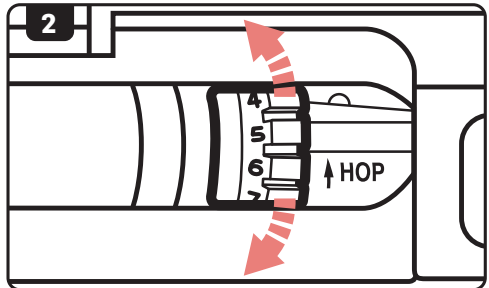
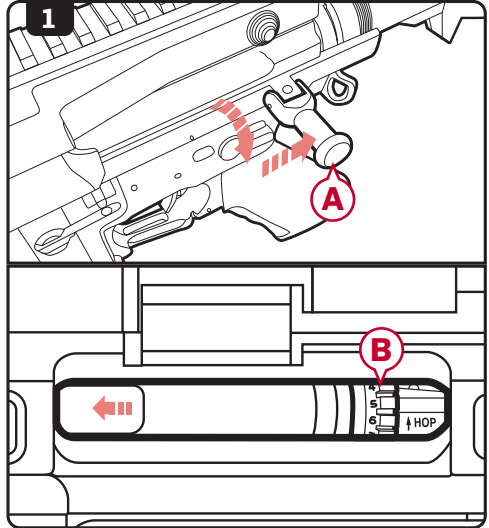
The advanced KRYTAC rotary hop-up unit is a standard feature in the Trident series AEGs. Proper adjustment of the hop-up will allow the AEGs to fire in a variety of shooting environments to obtain optimal BB trajectory.

## Hop-Up Adjustment

1. Pull the charging handle **A** downward then rearward. Hold charging handle in position to access the hop-up adjustment dial **B**.

2. Turn the dial up or down, an audible click will confirm each adjustment.

Increasing the number on the dial will increase the amount of hop-up on the BB. Decreasing the number will lower the amount of hop-up on the BB.



# HOP-UP SYSTEM

## Excessive Hop-Up

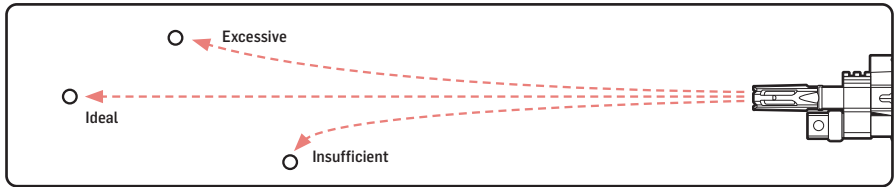
Airsoft BB travels in an extreme upward trajectory. Decrease the hop-up.

## Ideal Hop-Up

Airsoft BB travels in a long, horizontal flight path.

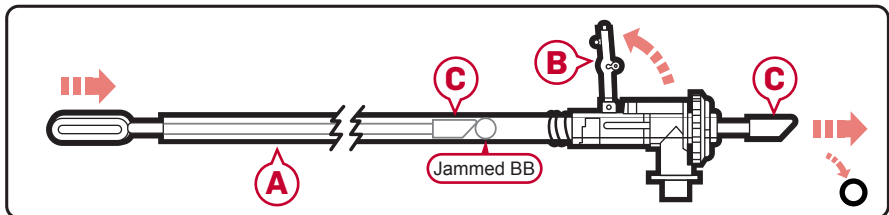
## Insufficient Hop-Up

Airsoft BB travels a short distance in a downward trajectory. Increase the hop-up.



# CLEARING JAMMED BBS

1. Disassemble the airsoft gun and remove the inner barrel assembly (A). (see pg.11 for disassembly instruction).
2. Lift the Hop-up lever (B) from the inner barrel assembly (refer to step 3 of pg.16).
3. Take the cleaning rod (C) and insert the unjamming side from the front of the barrel through to the rear to clear out the jammed BB.
4. Look through the barrel to ensure that it is cleared.
5. Reassemble the airsoft gun. (see pg.12 for assembly instruction).



## NOTE

Use only new, quality airsoft BBs. Never use recycled or low quality airsoft BBs, doing so may cause excessive jamming. In most cases, it can severely damage the internal gearbox and/or hop-up and inner barrel.

# DISASSEMBLY

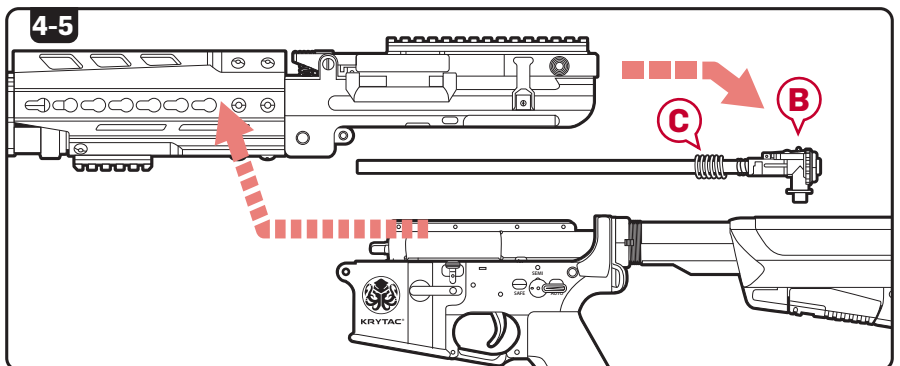
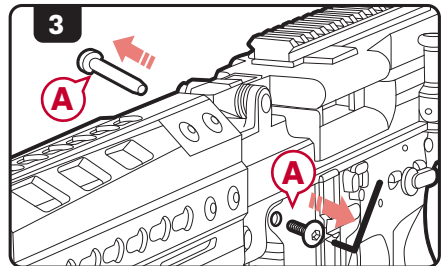
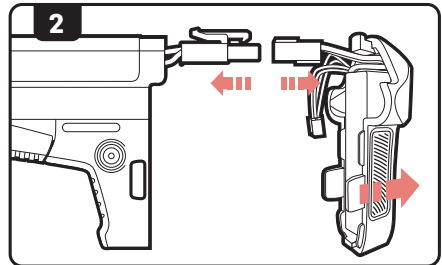
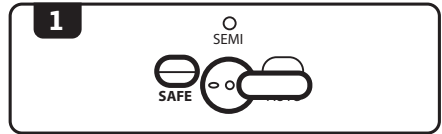
## NOTE

Before opening up the receiver, remove the magazine and fire the airsoft gun in a safe direction to ensure that the hop-up chamber is clear of any BBs.

1. Set the AEG to safe mode.
2. Remove the stock cover and disconnect the battery.
3. Remove **ONLY** the front pin **(A)** from the receiver.
4. Completely separate the upper and lower receiver.
5. Slide the hop-up and inner barrel assembly **(B)** out of the upper receiver.

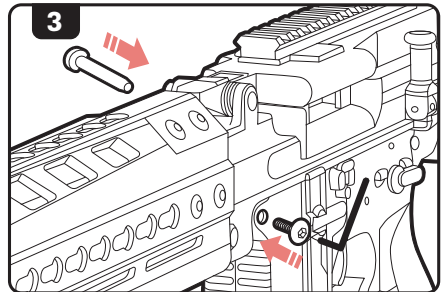
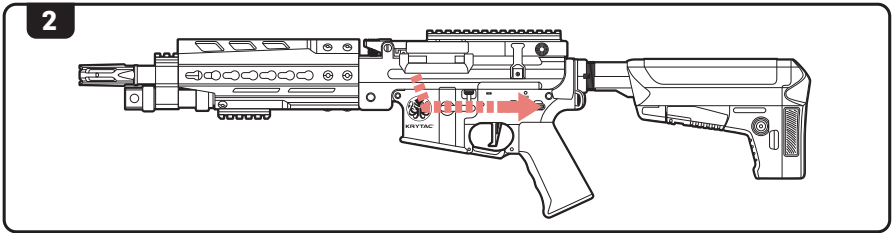
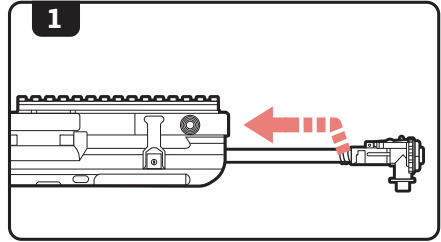
## NOTE

KEEP TRACK OF THE HOP-UP TENSION SPRING **(C)** SO IT DOES NOT BECAME LOST DURING DISASSEMBLY.



# ASSEMBLY

1. Insert the hop-up and inner barrel assembly into the upper receiver. Make sure to line up the hop-up to the receiver.
2. Carefully slide the upper receiver back onto the lower receiver.
3. Reinstall and secure the front body pin.

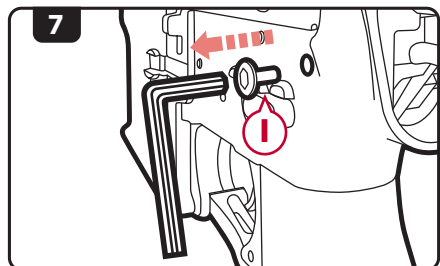
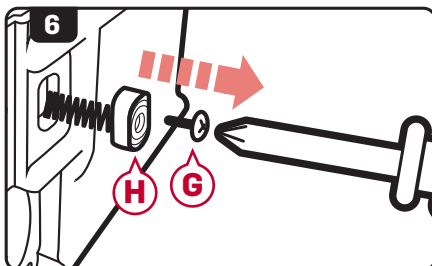
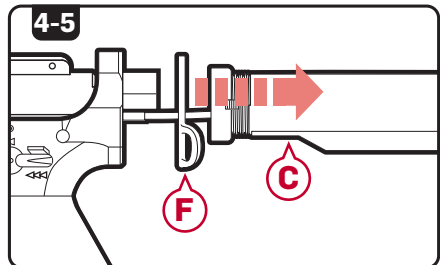
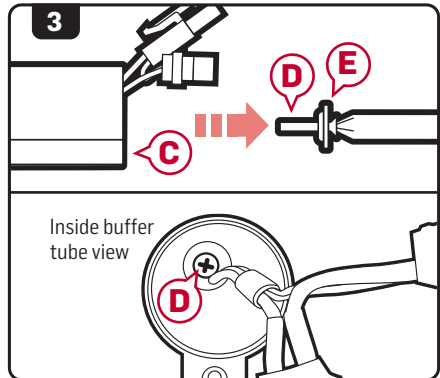
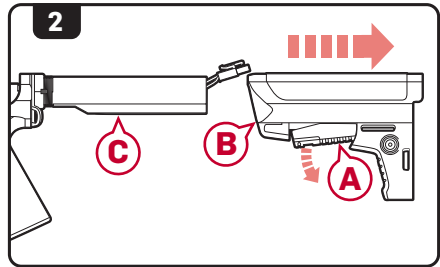


# MAIN SPRING ACCESS



PLEASE REVIEW THE WARRANTY CARD INFORMATION BEFORE OPENING AND/OR MODIFYING THE KRYTAC AIRSOFT GUN.

1. Disassemble the airsoft gun. (see pg.11 for disassembly instructions).
2. Pull down on the tab of the stock adjustment lever **(A)**, slide the stock **(B)** rearward and off the buffer tube **(C)**.
3. Use a Phillip (P3) screw driver to remove the screw **(D)** and washer **(E)** from inside the buffer tube **(C)**.
4. Remove the buffer tube **(C)**.
5. Remove the sling plate **(F)**.
6. Remove the screw **(G)** from the magazine release button **(H)** using a Phillip screw driver, then remove the magazine release button **(H)**.
7. Use a 3 mm hex key to remove the rear receiver pin screw **(I)**.



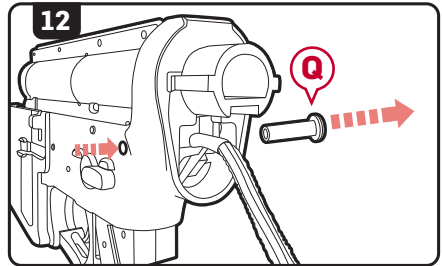
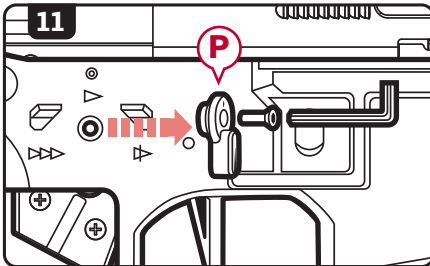
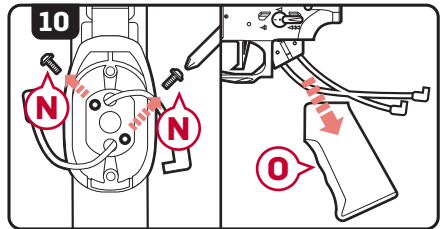
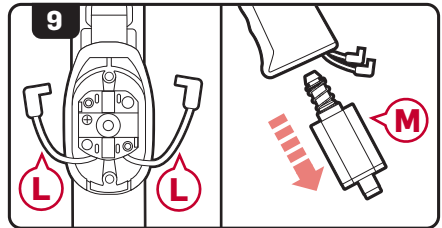
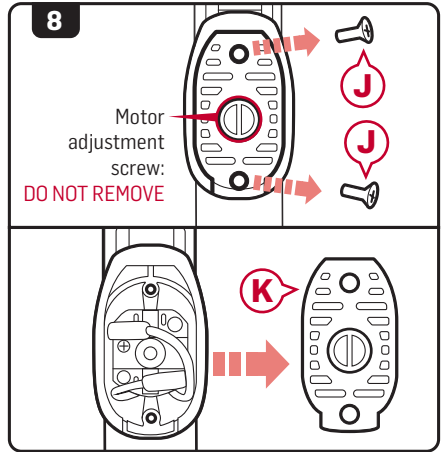
# MAIN SPRING ACCESS

- Use a Phillips screw driver to remove 2 screws **J** on the bottom of the motor plate **K** then remove the motor plate.

## NOTE

Take note of the wire and motor orientation before disconnecting.

- Disconnect the motor wires **L** and remove the motor **M**.
- Remove 2 Phillips screws **N** at the top of the motor grip interior, then remove the motor grip **O**.
- Remove the right side selector switch **P** using a 1.5 mm hex key.
- Press the rear receiver pin **Q** in and remove it from the other side of the airsoft gun.



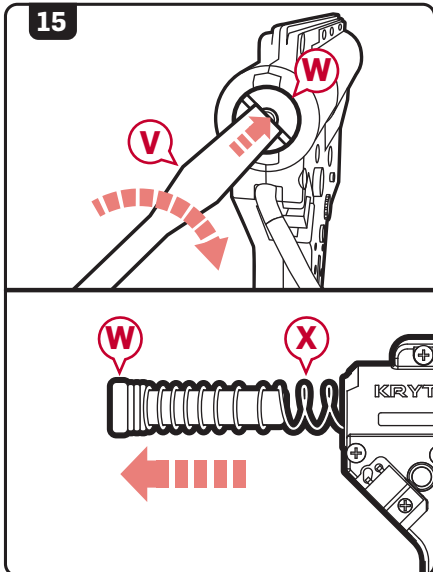
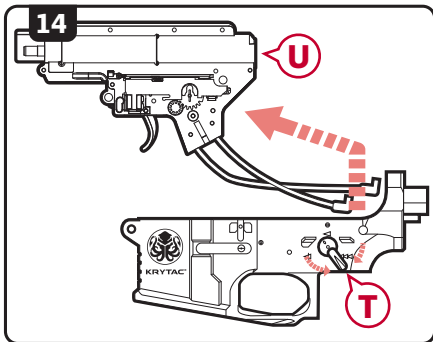
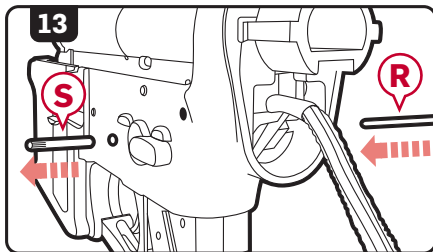
## MAIN SPRING ACCESS

13. Use a 2.5 mm punch **(R)** and press the body pin **(S)** in and remove it from the other side of the airsoft gun.
14. Move the selector switch **(T)** half way between safe mode and semi-automatic mode then slide the gearbox **(U)** out of the lower receiver.
15. Use a flathead screwdriver **(V)** push the spring guide **(W)** into the gearbox, turn 90° counter clockwise then pull the spring guide and spring **(X)** out.

### NOTE

Spring guide is under extreme pressure. Remove with caution.

16. Re-insert spring guide with desired spring into gear box. Follow steps in reverse order to reassemble the airsoft gun.



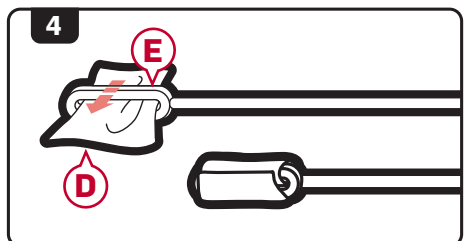
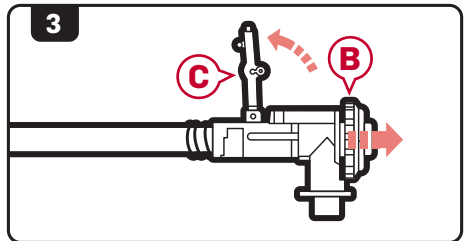
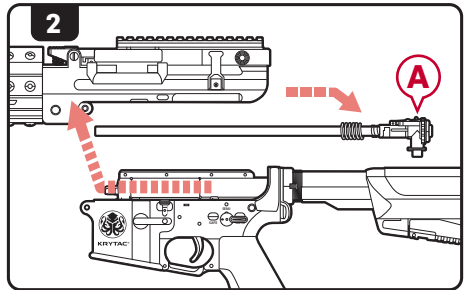
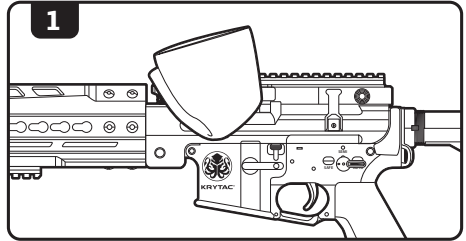


# CLEANING AND MAINTENANCE

## NOTE

WHILE POINTING THE AIRSOFT GUN IN A SAFE DIRECTION, REMOVE THE MAGAZINE AND CYCLE THE GEARBOX UNTIL NO BBS EXIT THE INNER BARREL. PLACE THE AIRSOFT GUN IN SAFE MODE AND DISCONNECT THE BATTERY PRIOR TO ANY CLEANING PROCEDURES.

1. Wipe down the external parts of the gun and remove any dirt and debris.
2. Disassemble the airsoft gun as described in the Disassembly section and pull out the barrel and hop-up assembly (A).
3. Pull back on the hop-up adjustment wheel (B) and lift the hop-up adjustment lever (C) up.
4. Take a lint-free cleaning patch (D) and place it through the looped end of the cleaning rod (E).

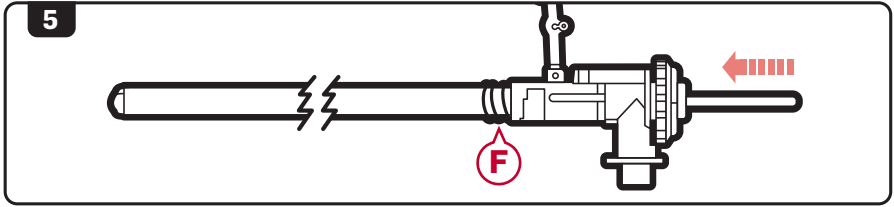


## WARNING

DO NOT ADD OIL TO THE HOP-UP BUCKING. EXCESSIVE OIL ON THE HOP-UP BUCKING MAY NEGATE THE HOP-UP, DECREASING RANGE AND ACCURACY.

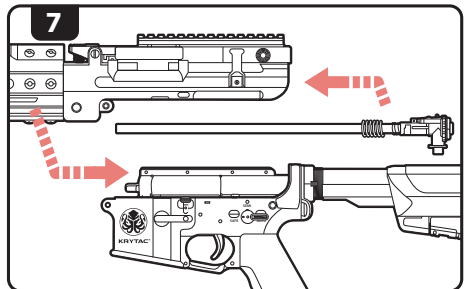
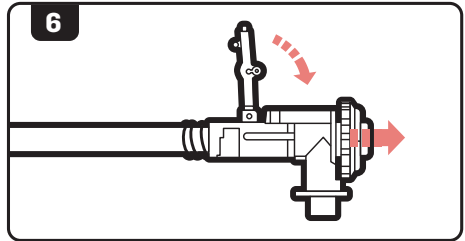
# CLEANING AND MAINTENANCE

5. Run the cleaning rod through the barrel from back to front (in the same direction that BBs travel).



**KEEP TRACK OF THE BARREL SPRING (F), IT CAN SEPARATE FROM THE BARREL ASSEMBLY.**

6. Pull back on the hop-up adjustment wheel and lower the hop-up adjustment lever back into position.
7. Reinsert the hop-up barrel assembly into the receiver and reassemble as described in the Assembly section.



# **OPERATING UNDER HARSH CONDITIONS**

---

When operating under harsh conditions, special maintenance may be required to match the climate conditions of a specific operational area.

## **Dust and Sand**

In harsh dusty or sandy environments, excessive debris can cause malfunctions and/or excessive wear on parts. Keep the gun covered and protected while not in use. When performing maintenance, use lubrication sparingly as it tends to attract dirt and other particles. After use in a dusty or sandy area, always field strip the gun, as outlined in the Disassembly section, cleaning all the areas that can be reached with a soft, clean, lint-free cloth.

## **Heavy Rain**

Never submerge or expose your gun to extremely wet environments. Exposure to such conditions may cause electrical failure and fluid to build-up inside the gearbox. Dry completely with a clean, lint-free cloth and clean inner barrel when necessary.

# TROUBLE SHOOTING GUIDE



**WHEN TROUBLESHOOTING, FOLLOW THE SAFETY MEASURES DESCRIBED IN THIS MANUAL.**

<b>SYMPTOMS</b>	<b>CAUSE</b>	<b>SOLUTIONS</b>
Not firing/No sound	Safety is engaged	Change selector to Semi Auto or Full Automatic Mode
	Low power or dead battery	Charge and replace battery
	Blown out fuse	Replace with new fuse
	Loose connection	Contact customer service for professional care
Motor is running but not firing	Inspect magazine	Check if magazine is properly loaded into the gun Ensure magazine is loaded with ammunition Ensure the hi-cap magazine is properly wound
Motor or battery is hot after short use	Damaged battery	Inspect and/or replace battery
	Loose connection terminal	Contact customer service for professional care
Semi-Auto feature not functioning properly	Battery voltage or discharge is too high	Condition or replace battery
Semi-Auto feature not working at all	Disconnecter is not engaged properly	Reset the disconnecter by setting the selector to safe, then to automatic, then to semi
Firing cycle slowing down	Battery is low on power	Charge or replace battery
High pitch or grinding noise	Motor level is not adjusted properly	Contact customer service for professional care
BB travels upward	Hop-up adjusted too high	Dial down the hop-up adjustment
BB travels downward	Hop-up adjusted too low	Dial up the hop-up adjustment
BB double feeding or rolling out of the barrel	Excessive grease or oil in the hopup chamber	Fire at least 200 rounds to eliminate excessive grease from the chamber Clean hop-up unit with supplied cleaning rod
	Hop-up unit is turned off	Turn hop-up unit on
Hop-up unit can't be adjusted	Hop-up adjustment arm is not set properly	Reset hop-up adjustment arm (See page 17, step 6 for reassembly)
Inner barrel is jammed or jamming	Use of recycled or low quality BBs	Use only KRYTAC branded or other high quality BBs
	Inner Barrel is contaminated with BBs or debris	Clear and/or clean inner barrel with supplied cleaning rod (See page 10 for clearing jam section and page 16 for cleaning and maintenance section)
Hi-Cap magazine not feeding	Magazine has not been wound	Wind wheel underneath magazine
	BBs are lodged inside the magazine	Shake or tap magazine to clear the jam
	Internal obstruction	Contact customer service for professional care

## HEARING PROTECTION REQUIREMENT

---

### HEARING PROTECTION REQUIREMENT FOR EUROPEAN COMMUNITY

The KRYTAC TRIDENT LMG Enhanced fulfill all relevant provisions of:

EMC Directive (2014/30/EU)

RoHS Directive (2011/65/EU)

General Product Safety Directive (2001/95/EC)

In conjunction with the following harmonized standards or technical specifications for the design and manufacture

EN 50581:2012; EN 55014-1:2006; EN 55014-2:1997

In accordance with the above mentioned standards, in some applications, noise or vibration levels may exceed the minimum Noise levels of 85db(A). If Noise levels exceed 85dB(A), appropriate ear protection must be used to prevent any damages due to sound emissions.

## CONTACT INFORMATION

---

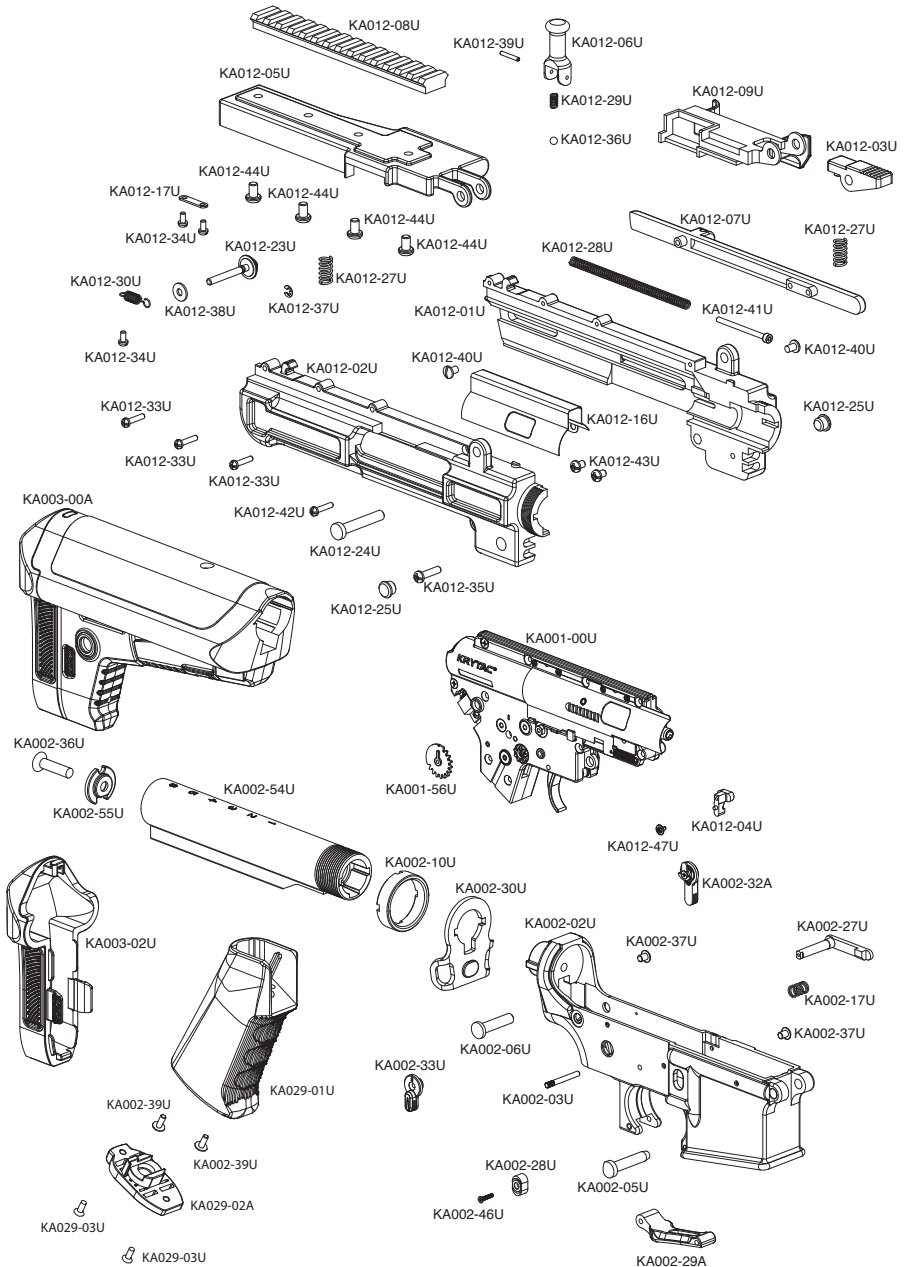
For additional troubleshooting, information, or questions regarding KRYTAC customer service:

**Submit a contact form at: [www.krytac.com](http://www.krytac.com)**

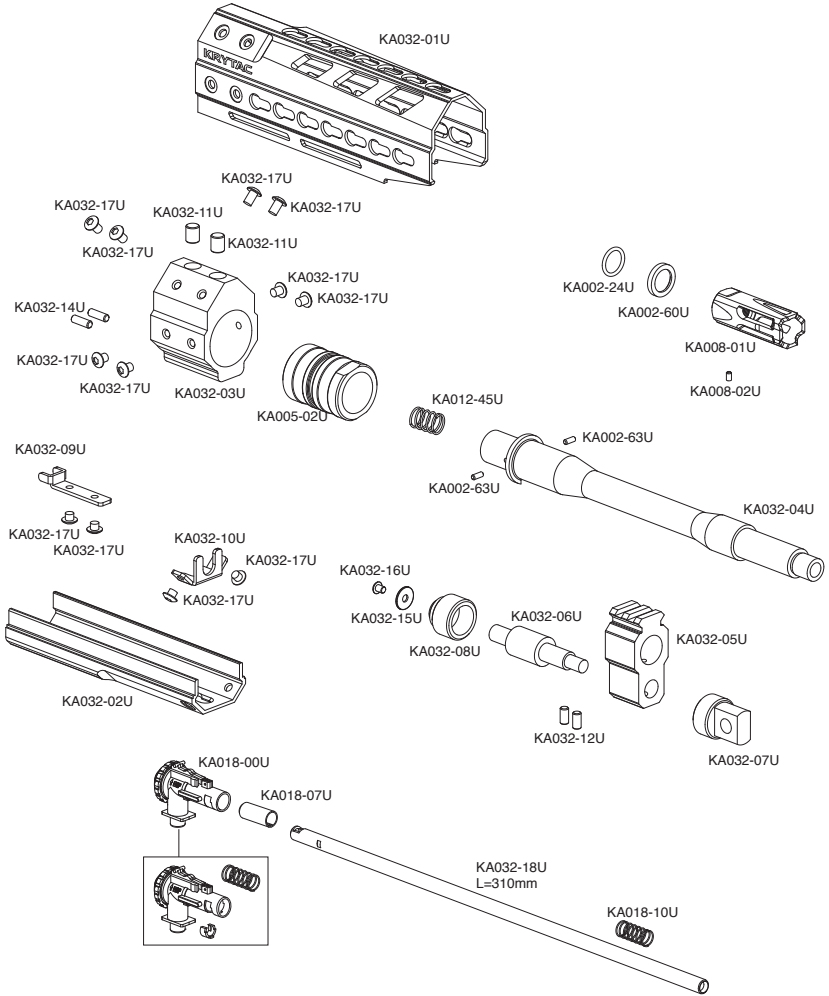
**Email us at: [support@krytac.com](mailto:support@krytac.com)**

Join the KRYTAC Community and visit **<http://forums.krytac.com>** for any additional technical questions and information about your KRYTAC.

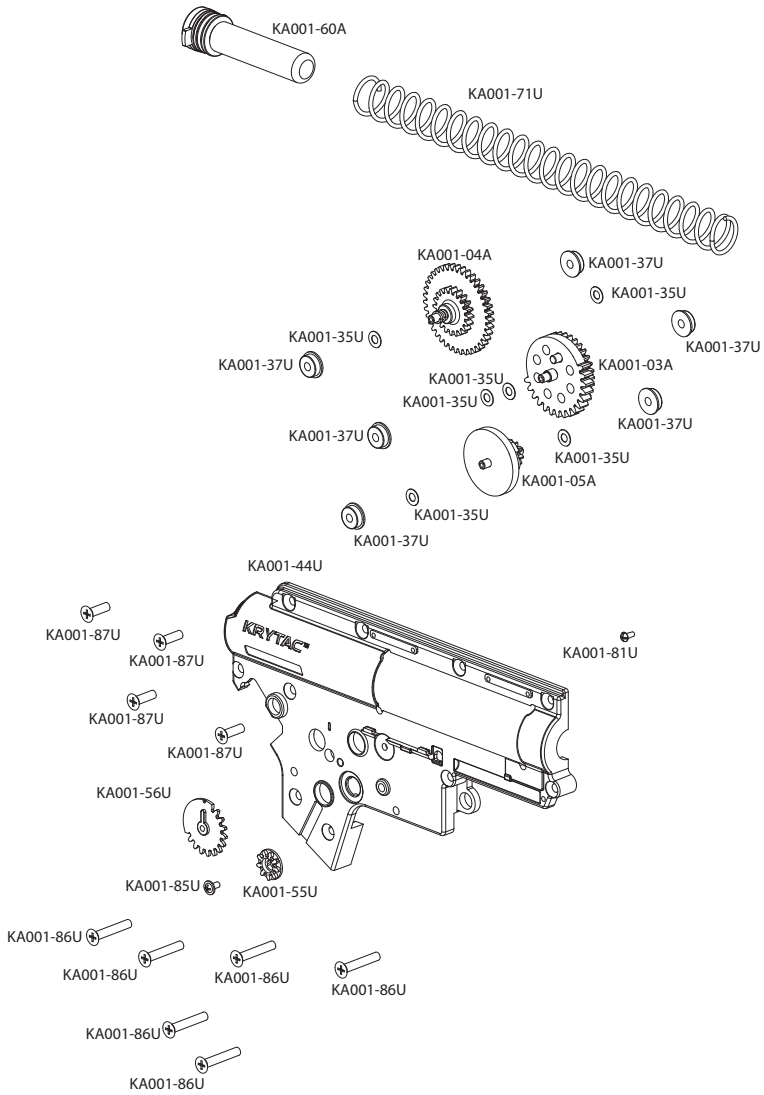
# COMPONENT DIAGRAM: LMG ENHANCED



# COMPONENT DIAGRAM: LMG ENHANCED

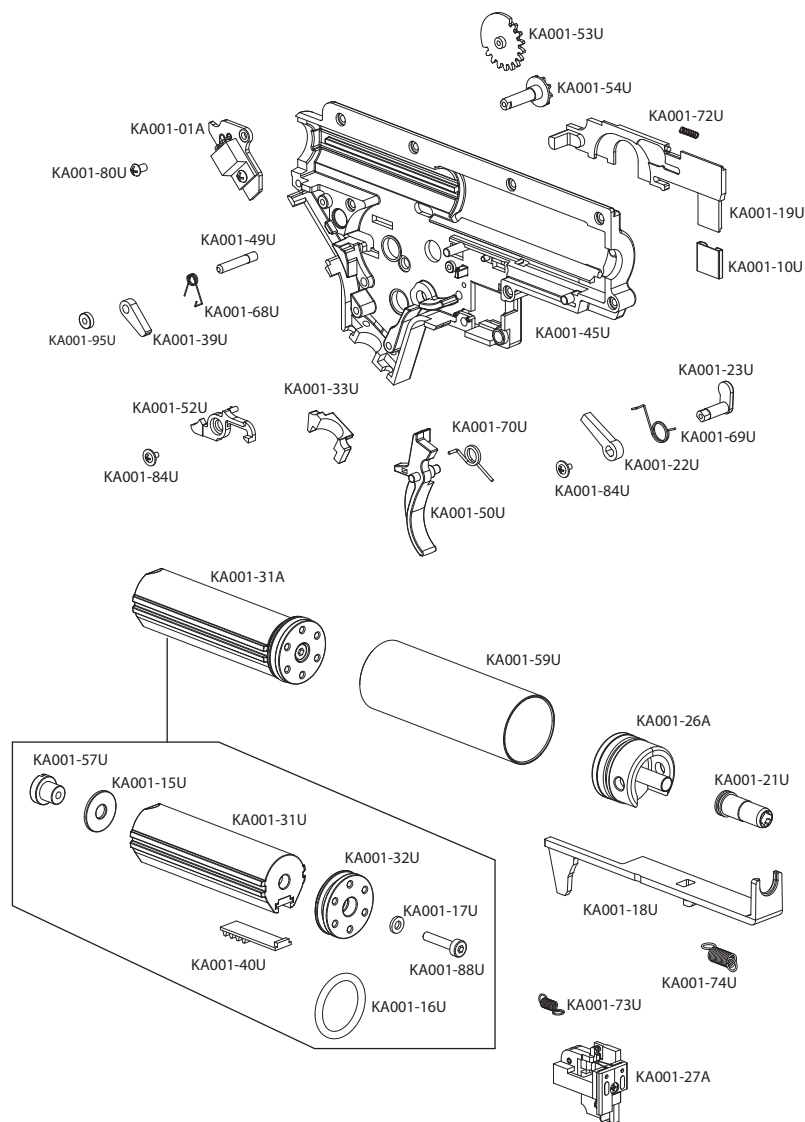


# COMPONENT DIAGRAM: LMG GEARBOX





# COMPONENT DIAGRAM: LMG GEARBOX



# COMPONENT LIST: LMG ENHANCED

PART #	NAME	
		KA001-59U CYLINDER
KA001-00U	GEARBOX	KA001-60A SPRING GUIDE ASSEMBLY
KA001-01A	MOSFET ASSEMBLY	KA001-68U ANTI-REVERSE LATCH SPRING
KA001-03A	SECTOR GEAR	KA001-69U SAFETY BLOCK SPRING
KA001-04A	SPUR GEAR	KA001-70U TRIGGER SPRING
KA001-05A	BEVEL GEAR	KA001-71U MAIN SPRING
KA001-10U	CONTACT (SELECTOR)	KA001-72U DISCONNECT SPRING
KA001-15U	MAIN SPRING SHIM	KA001-73U SWITCH SPRING
KA001-16U	PISTON HEAD O-RING	KA001-74U TAPPET PLATE SPRING
KA001-17U	PISTON HEAD SHIM	KA001-84U FLAT MICRO SCREW (2)
KA001-18U	TAPPET PLATE	KA001-85U SELECTOR TRANSFER GEAR SCREW
KA001-19U	SELECTOR PLATE	
KA001-21U	AIR NOZZLE	KA001-86U GEARBOX SHELL SCREW (LONG)(6)
KA001-22U	SAFETY BLOCK	
KA001-23U	SAFETY BLOCK LEVER	KA001-87U GEARBOX SHELL SCREW (SHORT)(4)
KA001-26A	CYLINDER HEAD ASSEMBLY	KA001-88U PISTON HEAD SCREW
KA001-27A	SWITCH ASSEMBLY	KA001-95U ANTI-RELEASE LATCH BUSHING
KA001-31A	PISTON ASSEMBLY	
KA001-31U	PISTON BODY	KA002-02U LOWER RECEIVER
KA001-32U	PISTON HEAD	KA002-03U GEARBOX PIN
KA001-33U	WIRING COVER	KA002-05U FRONT RECEIVER PIN
KA001-35U	SHIM (6)	KA002-06U REAR RECEIVER PIN
KA001-37U	BEARING	KA002-10U CASTLE NUT
KA001-39U	ANTI-REVERSE LATCH	KA002-17U MAGAZINE RELEASE SPRING
KA001-40U	PISTON TOOTH RACK	KA002-24U CRUSH WASHER O-RING
KA001-44U	GEARBOX SHELL (RIGHT)	KA002-27U MAGAZINE RELEASE
KA001-45U	GEARBOX SHELL (LEFT)	KA002-28U MAGAZINE RELEASE BUTTON
KA001-49U	ANTI-REVERSE LATCH PIN	KA002-29A TRIGGER GUARD ASSEMBLY
KA001-50U	TRIGGER	KA002-30U SLING PLATE
KA001-52U	DISCONNECT LEVER	KA002-32A LEFT SELECTOR ASSEMBLY
KA001-53U	SELECTOR GEAR (LEFT)	KA002-33U RIGHT SELECTOR
KA001-54U	SELECTOR TRANSFER AXIS GEAR	KA002-36U BUFFER TUBE SCREW
KA001-55U	SELECTOR TRANSFER CAP GEAR	KA002-37U RECEIVER PIN SCREW CAP (2)
KA001-56U	SELECTOR GEAR (RIGHT)	KA002-39U PISTOL GRIP SCREW
KA001-57U	PISTON HEAD NUT	KA002-46U MAGAZINE RELEASE SCREW
		KA002-53U RIGHT SELECTOR SCREW

# COMPONENT LIST: LMG ENHANCED

KA002-54U	BUFFER TUBE	KA012-37U	DUST COVER RELEASE CLIP
KA002-55U	BUFFER TUBE SCREW CAP	KA012-38U	DUST COVER RELEASE WASHER
KA002-60U	CRUSH WASHER	KA012-39U	CHARGING HANDLE PIN
KA002-63U	BARREL BASE PIN (2)	KA012-40U	BATTERY TRAY SCREWS
KA003-00A	STOCK ASSEMBLY	KA012-41U	CHARGING SPRING GUIDE
KA003-02U	BUTTPAD	KA012-42U	RECEIVER PANEL SHORT SCREW
KA005-02U	BARREL NUT	KA012-43U	BOLT COVER SCREWS
KA008-01U	FLASH HIDER	KA012-44U	DUST COVER SCREWS
KA008-02U	SET SCREW	KA012-45U	HOP-UP TENSION SPRING
KA012-01U	RECEIVER PANEL (LEFT)	KA012-47U	BOLT RELEASE SCREW
KA012-02U	RECEIVER PANEL (RIGHT)	KA018-00U	HOP-UP ASSEMBLY
KA012-03U	MOCK RELEASE LEVER	KA018-07U	BUCKING
KA012-04U	LMG BOLT RELEASE	KA018-10U	TENSION SPRING
KA012-05U	LMG DUST COVER	KA029-01U	PISTOL GRIP
KA012-06U	LMG CHARGING HANDLE	KA029-02A	MOTOR PLATE ASSEMBLY
KA012-07U	CHARGING SLIDE	KA029-03U	MOTOR PLATE SCREW
KA012-08U	LMG RAILS	KA032-01U	UPPER HANDGUARD
KA012-09U	LMG FEED TRAY	KA032-02U	LOWER HANDGUARD
KA012-16U	MOCK BOLT COVER	KA032-03U	HANDGUARD SPACER
KA012-17U	DUST COVER RELEASE PLATE	KA032-04U	OUTER BARREL
KA012-23U	DUST COVER RELEASE	KA032-05U	GAS BLOCK
KA012-24U	LMG DUST COVER PIN	KA032-06U	GAS ROD
KA012-25U	RECEIVER PANEL CROSSBOLT CAPS	KA032-07U	GAS NUT
KA012-27U	LMG DUST COVER SPRING	KA032-08U	HANDGUARD NUT
KA012-28U	CHARGING SLIDE SPRING	KA032-09U	HANDGUARD HOOK
KA012-29U	CHARGING HANDLE SPRING	KA032-10U	HANDGUARD LOCK
KA012-30U	DUST COVER RELEASE SPRING	KA032-11U	BARREL NUT SCREWS (2)
KA012-33U	RECEIVER PANEL TOP SCREWS	KA032-12U	GAS BLOCK SCREWS (2)
KA012-34U	DUST COVER RELEASE SCREWS	KA032-14U	BARREL NUT PINS (2)
KA012-35U	RECEIVER PANEL CROSSBOLT SCREW	KA032-15U	HANDGUARD WASHER
KA012-36U	CHARGING HANDLE DETENTE BALL	KA032-16U	GAS ROD SCREW
		KA032-17U	HANDGUARD SCREWS (12)
		KA032-18U	INNER BARREL (310 MM)

[www.krytac.com](http://www.krytac.com)

© Copyright 2015  
KRISS INDUSTRIES ASIA  
Subject to change

V.04 R.2020.02.19

