



KRYTAC®

OWNER'S MANUAL

TRIDENT

MK III

PDW-M

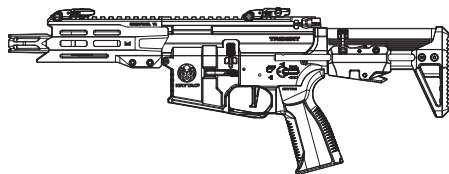


TABLE OF CONTENTS

Safety Rules 2

Specifications 4

Electronic Control Unit 5

Velocity and Energy Output Chart 6

Package Contents 6

Loading the Magazine 7

Fire Selector Switch 8

Compact Carbine Stock 8

Ambidextrous Sling Loop 9

Trigger Pull Adjustment 9

Battery Installation 10

Hop-Up System 11

Clearing Jammed BBs 12

Disassembly 13

Assembly 14

Main Spring Access 15

Cleaning and Maintenance 19

Trouble Shooting Guide 21

Operating Under Harsh Conditions 22

Hearing Protection Requirement 22

Contact Information 22

Component Diagrams and Lists 23



WARNING

THIS PRODUCT IS NOT INTENDED FOR USE BY UNTRAINED PERSONS (INCLUDING CHILDREN) WITH OR WITHOUT PHYSICAL OR MENTAL HANDICAPS. THESE HANDICAPS INCLUDE REDUCED PHYSICAL, SENSORY OR MENTAL CAPABILITIES, OR LACK OF EXPERIENCE AND KNOWLEDGE OF THE PRODUCT AND SAFETY GUIDELINES. ALL USERS SHOULD HAVE TRAINED SUPERVISION OR INSTRUCTIONS CONCERNING THE USE OF THE APPLIANCE BY A PERSON RESPONSIBLE FOR HIS OR HER SAFETY.

SAFETY RULES

Please read the entire KRYTAC manual before operating the airsoft electric gun (AEG). This manual covers important safety, operational, and maintenance topics. It is important that the user reads and understands the manual in order to safely handle and operate the airsoft electric gun (AEG). Failure to follow the safety guidelines and/or operational instructions in this manual may result in serious personal injury or damage to the airsoft electric gun (AEG).

Safety Guidelines

EYE PROTECTION

Always wear eye protection while shooting, operating, and maintaining your airsoft guns.

EAR PROTECTION

With noise levels exceeding 85dB(A), appropriate ear protection must be used to prevent any damage due to sound emissions.

FIREARM SAFETY RULES

Always assume that the airsoft gun is loaded. Never assume the chamber is empty based on memory or from someone else's word. An airsoft gun can still fire with the magazine removed.

KEEP YOUR FINGER OFF THE TRIGGER

Remove your finger from the inside of the trigger guard until your sights are aligned on target and you are ready to fire.

MUZZLE CONTROL

Always keep the muzzle of the airsoft gun pointed in a safe direction. Never point the airsoft gun towards anything you do not intend to shoot.

KNOW YOUR TARGET AND ITS SURROUNDINGS (SAFETY DISTANCE)

Take note of objects in front of and beyond your target. Airsoft guns can shoot up to and beyond 150 feet/45.5 meters and may travel further than intended without an adequate backstop. Never shoot an airsoft gun directly at targets such as rocks, glass, water, or other hard surfaces that may ricochet BBs in unpredictable directions.



WARNING

SAFETY IS YOUR RESPONSIBILITY

The KRYTAC airsoft gun is designed and manufactured to KRYTAC's high standards. It was carefully inspected before it was packaged and shipped from our factory. It is the sole responsibility of the user for its safe use and handling. This airsoft gun is safe unless handled irresponsibly or misused.

BEWARE OF BARREL OBSTRUCTIONS

Ensure that the barrel of your airsoft gun is free and clear of any obstructions prior to firing the airsoft gun. Failure to do so may cause a malfunction, and in some cases damage the airsoft gun.

KEEP THE SAFETY ON

Keep the fire selector set to safe until your sights are aligned on target and you are ready to fire.

SAFETY RULES

FAILURE TO FIRE

If the airsoft gun fails to fire, misfires, or malfunctions, do not look into/down the barrel of the airsoft gun. BBs can jam in the chamber and can launch suddenly while under pressure causing serious injury.

FUSE

DO NOT REMOVE OR BYPASS THE FUSE. It is an integral part of the system,. Alterations to the fuse will void warranty and may result in operational failure and critical damage to internal components.

MAINTAIN YOUR AIRSOFT GUN PROPERLY

Maintaining your airsoft gun as outlined in the manual ensures that your airsoft gun will be safe to shoot and perform to its designed specifications. Alterations, modifications, or adjustments may damage your airsoft gun, making it unsafe to shoot and/or voiding all warranty claims.

STORAGE AND TRANSPORT

Keep the fire selector on the airsoft gun set to safe, with the magazine and battery removed when storing your airsoft gun. Always store your airsoft gun in a safe place and out of the reach of children. When transporting your airsoft gun make sure that it is in a designated airsoft gun case. Never brandish your airsoft gun in public.



WARNING

IT IS YOUR RESPONSIBILITY TO SAFELY STORE AND TRANSPORT YOUR AIRSOFT GUN.

ORANGE TIP

Any alteration of the coloration or markings required by state and/or federal law may be deemed illegal in a court of law. All risks and responsibility of any alteration to the product will be assumed by the operators, owners and/or user of the product.



WARNING

THE ORANGE TIP DOES NOT DISTINGUISH YOUR AIRSOFT GUN AS A TOY, ALWAYS TREAT YOUR AIRSOFT GUN AS IF IT IS A REAL FIREARM.

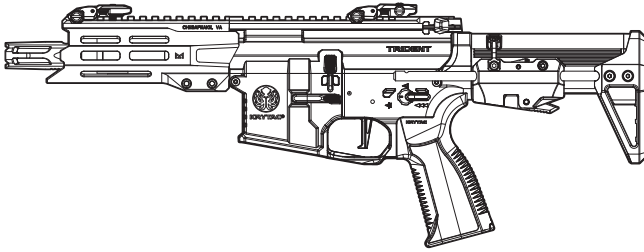
HAZARDS OF BEING MISTAKEN FOR A REAL FIREARM

Due to the nature and design of some airsoft guns, they may be mistaken as a real firearm. It is strongly advised to operate an airsoft gun in the safety and privacy of your own home, or at a legally sanctioned location or game field. Police, Peace Officers, and Law Enforcement Officers are trained to treat objects that resemble a firearm as one. In the event that you are approached by a Law Enforcement Official, completely comply with their instructions. Never point an airsoft gun at a Law Enforcement Official. Confrontation with a Law Enforcement Official may result in serious injury or death.

ALCOHOL, MEDICATIONS AND DRUGS

Do not handle or operate your airsoft gun while under the influence of alcohol, medication, or drugs that may impair judgment.

SPECIFICATIONS



Caliber	6mm
Overall Length	528mm (20.8") - 613mm (24.1")
Overall Height	189mm (7.4")
Weight	2.4 kg (5.3 lbs)
Outer Barrel Length	127mm (5")
Inner Barrel Length	155 mm
Inner Barrel Diameter	6.03 mm
Rate of Fire	21+ RPS

PERFORMANCE DETAILS ARE BASED ON U.S. SPECIFICATIONS AND CAN BE MODIFIED TO MEET THE LAWS AND REGULATIONS OF YOUR LOCAL REGION.

PRODUCT FEATURES

KRYTAC MK II metal alloy receiver	Electronic Control Unit (ECU)
TR405 M-LOK rail system	Microswitch E-trigger
KRYTAC low profile folding sights	Easy spring access
Compact carbine stock	Padded cylinder head
KRYTAC angled motor grip	Relief-cut cylinder window
Ambidextrous fire selector	Lightweight, full metal rack piston
Enlarged bolt release	Anti-corrosion mechbox coating
Licensed CMC adjustable trigger	Improved rotary hop-up with temperature and wear-resistant hop-up bucking
MIL-STD 1913 Picatinny top rail	KRYTAC neo high torque motor
Ambidextrous magazine release	
KRYTAC Nautilus mechbox with 8mm bearings, Gate Titan-ready	

ELECTRONIC CONTROL UNIT (ECU)

The ECU features new functionality and protection for your KRYTAC airsoft gun.

FULL CYCLE DETECTION AND PARTIAL ACTIVE BREAKING

Full cycle detection and partial active braking ensure the gearbox completes its cycle without interruption, preventing motor inertia from causing double firing in semi-auto mode and reducing the risk of rapid overheating.

BATTERY AND POWER DETECTION

When connecting a 7.4v battery: The motor will emit two beeps upon detecting a connection. When the battery level is low, the motor will emit a short beep every half second while the trigger is active.

When connecting a 11.1v battery: The motor will emit three beeps upon detecting a connection. When the battery level is low, the motor will emit a short beep every half second while the trigger is active.

Battery Type	Battery Connection	Battery Low Power Detection
7.4v 2 cell lipo battery	2 beeps on connection	1 short beep every 0.5 seconds
11.1v 3 cell lipo battery	3 beeps on connection	1 short beep every 0.5 seconds



HIGH VOLTAGE BATTERY: WHEN THE BATTERY CONNECTED IS HIGHER THAN RECOMMENDED USABLE VOLTAGE, THE MOTOR WILL EMIT A SINGLE CONTINUOUS BEEP AND THE MOTOR WILL NOT ENGAGE.

GEAR PROTECTION AUTO POWER-OFF

When the trigger is held down for two seconds and no gear movement is detected, the power is cut off. This feature is designed to prevent further or more significant harm in case of mechanical malfunctions that could occur by continuing to press the trigger.

ECU SLEEP MODE

When the selector switch is turned to the safety position, the electronic control unit will enter sleep mode to lower power consumption, reducing parasitic discharge and prolonging battery life

VELOCITY AND ENERGY OUTPUT CHART

Your KRYTAC product has been configured to comply with your region's energy output regulations. The table below is a reference to the energy output specifications organized by region.

Country	Max Velocity	Energy Output
Japan, Italy	85 m/s	0.73 Joules
UK	110 m/s	1.24 Joules
Argentina, Austria, Belgium, Bosnia, Brazil, Bulgaria, Canada, Chile, Croatia, Cyprus, Czech Republic, Denmark, Estonia, Finland, France, Germany, Greece, Guatemala, Herzegovina, Hong Kong, Hungary, Iceland, Israel, Latvia, Liechtenstein, Lithuania, Macedonia, Moldavia, Netherlands, New Zealand, Norway, Paraguay, Philippines, Poland, Portugal, Romania, Russia, Serbia, Slovakia, Slovenia, South Africa, South Korea, Spain, Sweden, Switzerland, Turkey, U.S.A.	120 m/s	1.45 Joules

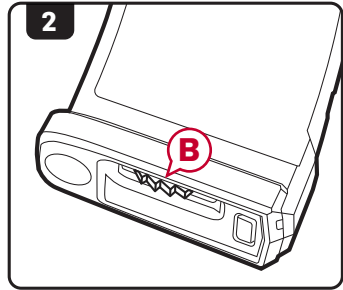
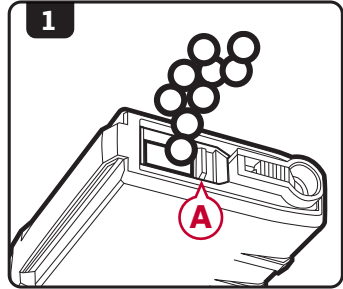
PACKAGE CONTENTS

- [1] Trident MK III PDW-M airsoft electric gun (AEG)
- [1] 150rd mid cap magazine
- [1] Set of low-profile front and rear sights
- [1] M-LOK 3-slot short accessory rail section
- [1] User's manual
- [1] Cleaning rod

LOADING THE MAGAZINE

High-Cap

1. Place the hi-cap magazine with the trap door (A) facing upward. Open the trap door and dispense BBs into the BB well.
2. When full, close the trap door and turn the winding wheel (B) forward until the 'clicking' changes tone.

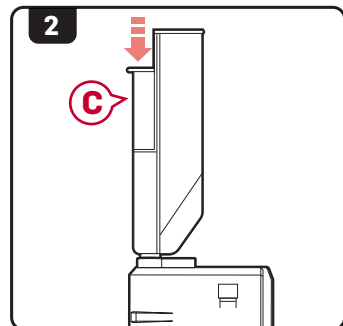
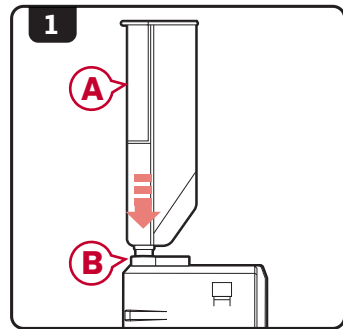


DO NOT OVER LOAD THE MAGAZINE

WARNING

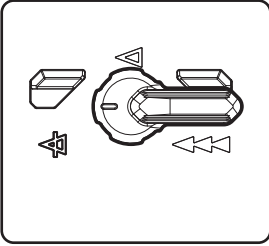
Mid-Cap

1. Using a speed loader (A) or other magazine loader, insert the nozzle into the opening of the magazine (B).
2. Press down on the loader plunger (C) to load BBs into the magazine.
3. Stop once the magazine is full, do not force more into the magazine.



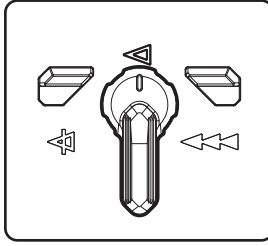
FIRE SELECTOR SWITCH

SAFE MODE



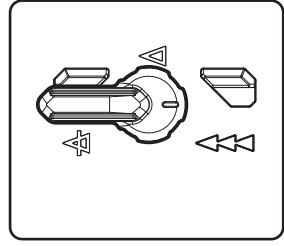
When in safe mode, the trigger will not engage and the airsoft gun will not fire.

SEMI-AUTO MODE



While in semi-auto mode, the airsoft gun will only fire one shot for each time the trigger is engaged.

FULL-AUTO MODE



In full-auto mode, the gun will continuously fire as long as the trigger remains engaged.

SAFETY TIP

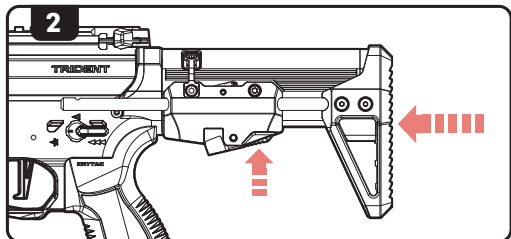
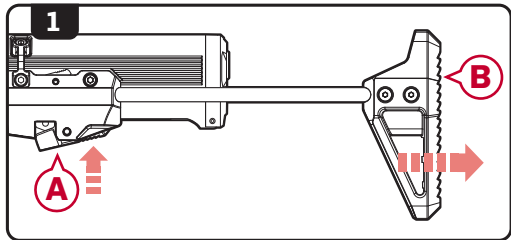
It is advised when you are not ready to fire, keep the fire selector switch on the airsoft gun in the safe position.

WARNING

DO NOT ENGAGE THE TRIGGER WHILE SWITCHING BETWEEN MODES ON THE FIRE SELECTOR.

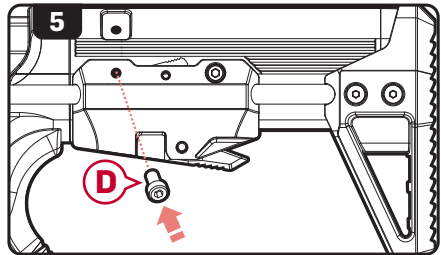
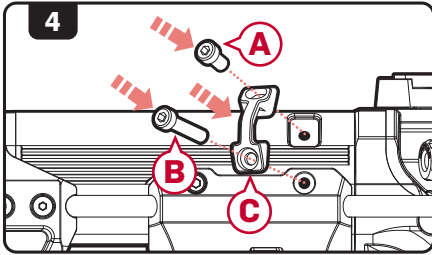
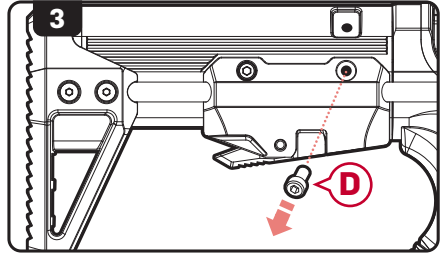
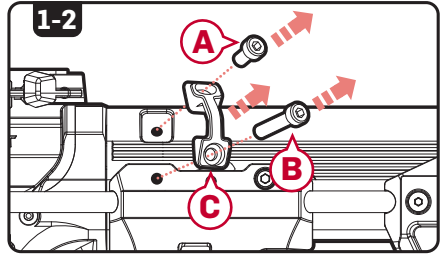
GEN 2 COMPACT CARBINE STOCK

1. To extend, depress the stock release button **(A)** and pull the retractable stock **(B)** to its rear-most position.
2. To retract, depress the stock release button **(A)** and push the retractable stock **(B)** to its forward-most position.



AMBIDEXTROUS SLING LOOP

1. Use a 3mm Allen wrench to remove the top(short) **(A)** and bottom(long) **(B)** screws from the sling loop **(C)**.
2. Remove the sling loop.
3. Use a 3mm Allen wrench to remove the screw(short) **(D)** from the other side of the stock.
4. Install the sling loop **(C)** onto the desired side of the stock using a 3mm Allen wrench. Install the top(short) **(A)** and bottom(long) **(B)** screws as shown.
5. Install the last screw **(D)** onto the stock.



TRIGGER PULL ADJUSTMENT

NOTE

Before adjusting the trigger pull, set the fire select to SAFE, remove the magazine and disconnect the battery.

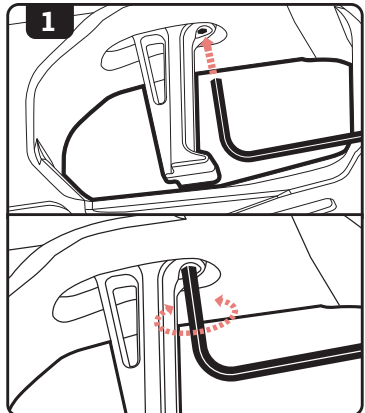
1. Use a 1.5mm Allen wrench to adjust the trigger pull length.

Turn clockwise to shorten the pull.

Turn counter-clockwise to lengthen the pull.

WARNING

TAKE CARE NOT TO OVER TORQUE THE ADJUSTMENT SCREW.



BATTERY INSTALLATION



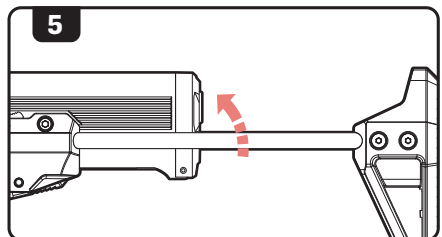
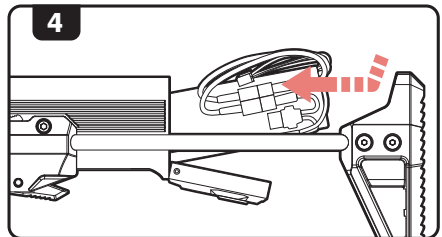
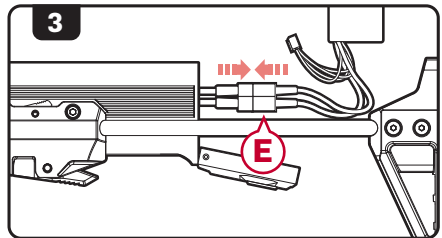
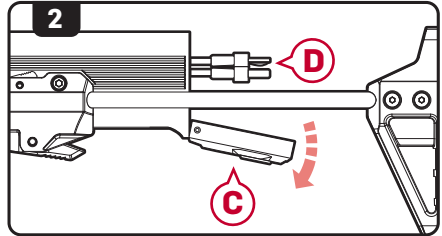
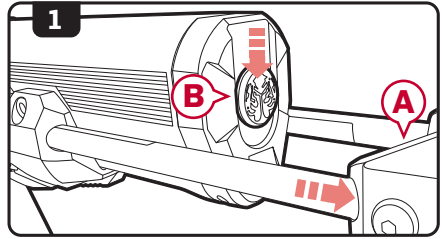
WARNING

ENSURE THAT THE STOCK IS IN THE FULLY EXTENDED POSITION BEFORE OPENING THE STOCK COVER.

1. Extend the retractable stock (A) fully and press down on the stock cap release button (B).
2. Swing open the stock cap (C) to show the male T-plug (D).
3. Connect a small battery with female T-plug (E) to the male T-plug.
4. Curl the connection wires against the side of the battery and insert together into the stock.
5. Swing close the stock cap.

NOTICE

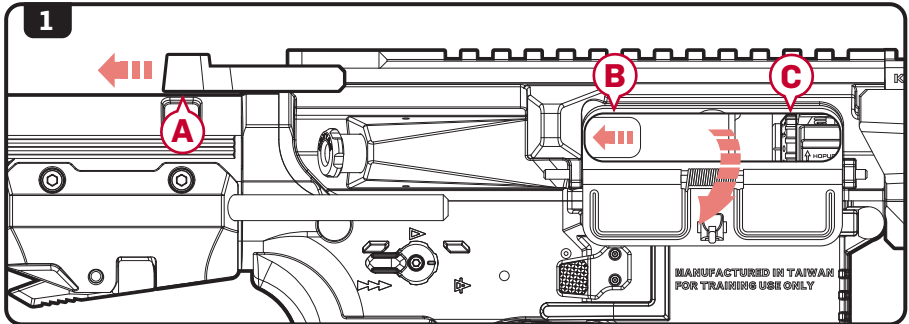
If your battery utilizes mini Tamiya plug then a T-plug to Tamiya plug adapter will be necessary.



HOP-UP SYSTEM

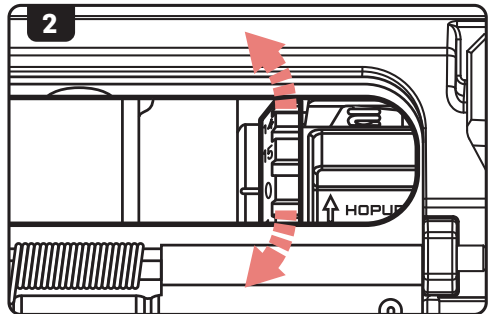
The advanced KRYTAC rotary hop-up unit is a standard feature in the Trident series AEGs. Proper adjustment of the hop-up will allow the AEGs to fire in a variety of shooting environments to obtain optimal BB trajectory.

Hop-Up Adjustment



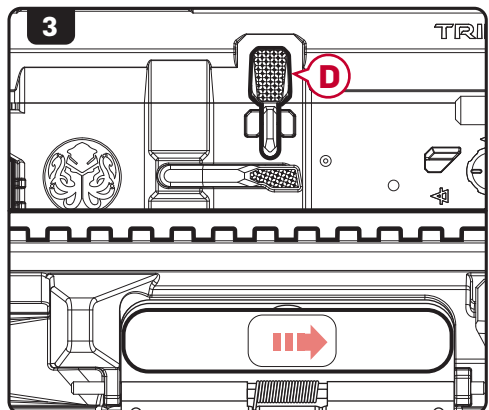
1. Pull the charging handle **A** rearward locking the bolt plate **B**. This will provide access to the hop-up adjustment dial **C**.

2. Turn the dial up or down, an audible click will confirm each adjustment.



Increasing the number on the dial will increase the amount of hop-up on the BB. Decreasing the number will lower the amount of hop-up on the BB.

3. Once the hop-up has been set, depress the bolt catch release **D** to return the bolt plate back to its fully seated position.



HOP-UP SYSTEM

Excessive Hop-Up

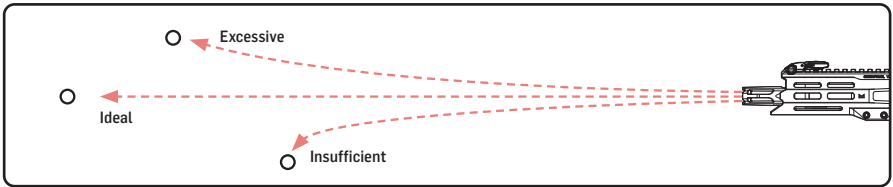
Airsoft BB travels in an extreme upward trajectory. Decrease the hop-up.

Ideal Hop-Up

Airsoft BB travels in a long, horizontal flight path.

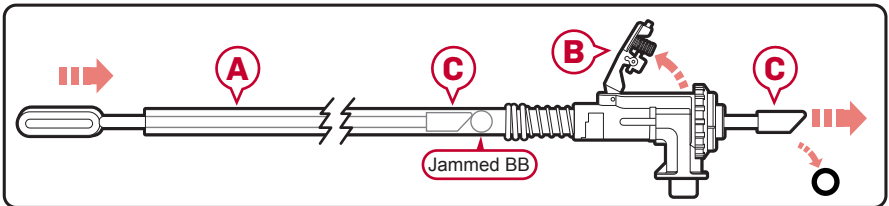
Insufficient Hop-Up

Airsoft BB travels a short distance in a downward trajectory. Increase the hop-up.

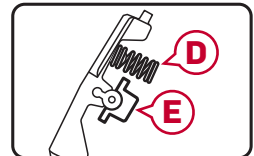


CLEARING JAMMED BBS

1. Disassemble the airsoft gun and remove the inner barrel assembly (A). (see pg.13 for disassembly instruction).
2. Lift the Hop-up lever (B) from the inner barrel assembly (refer to step 3 of pg.19).
3. Take the cleaning rod (C) and insert the unjamming side from the front of the barrel through to the rear to clear out the jammed BB.



4. Look through the barrel to ensure that it is cleared.
5. Reassemble the airsoft gun. (see pg.14 for assembly instruction).



WARNING TAKE CARE NOT TO LOSE THE TENSION SPRING (D) AND THE SPACER NUB (E).

NOTE Use only new, quality airsoft BBs. Never use recycled or low quality airsoft BBs, doing so may cause jamming or poor performance. In most cases, it can severely damage the internal gearbox and/or hop-up and inner barrel.

DISASSEMBLY

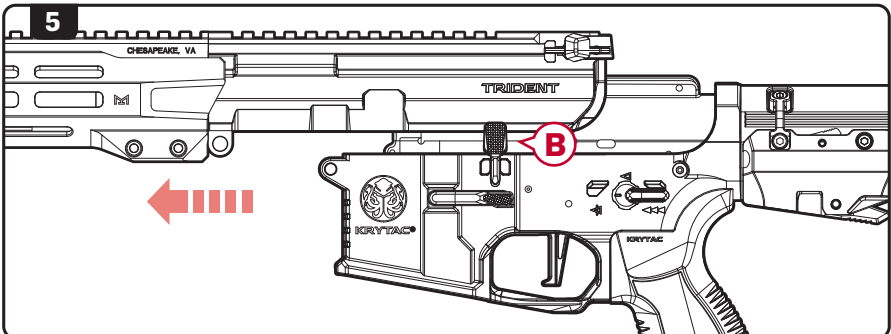
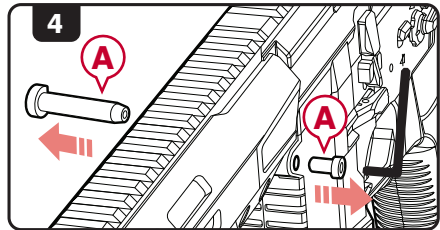
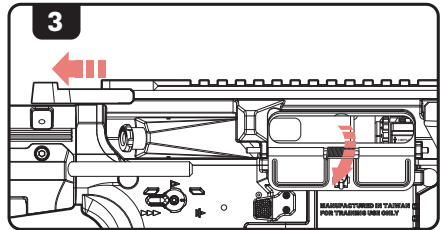
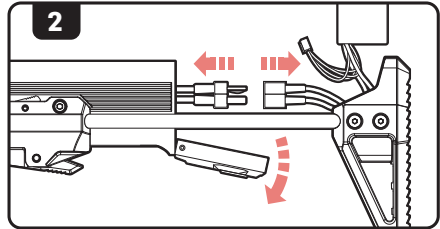
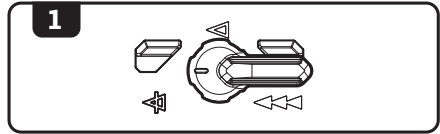
NOTE

Before opening up the receiver, remove the magazine and fire the airsoft gun in a safe direction to ensure that the hop-up chamber is clear of any BBs.

1. Set the AEG to safe mode.
2. Open the stock cap (see pg.10 for instruction) then disconnect and remove the battery.
3. Pull the charging handle rearward to lock the bolt plate back.
4. Remove **ONLY** the front pin **(A)** from the receiver.
5. Slide the upper receiver forward and away from the lower receiver.

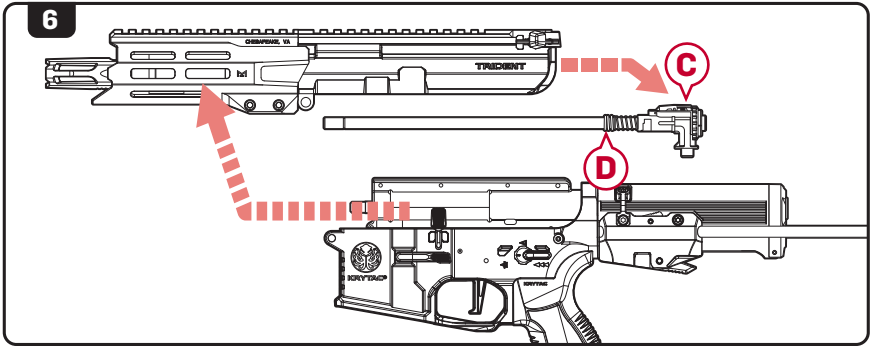
NOTE

The bolt catch lever **(B)** may fall off of the lower receiver when separating the receivers. Avoid turning or jostling the lower receiver to help prevent loss of the bolt catch lever.



DISASSEMBLY

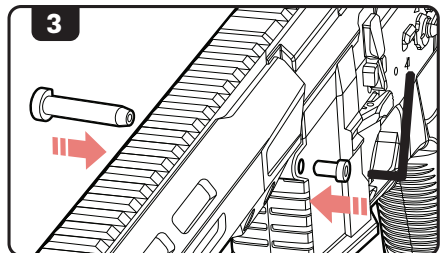
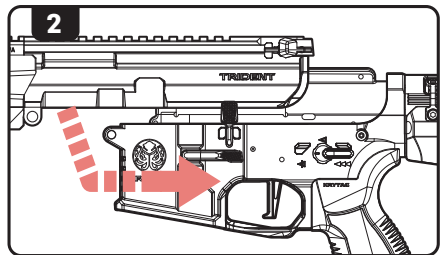
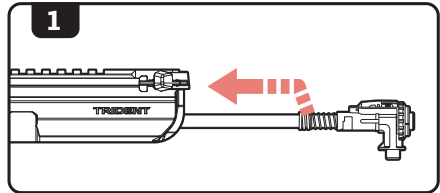
6. Slide the hop-up and inner barrel assembly (C) out of the upper receiver.



NOTE KEEP TRACK OF THE HOP-UP TENSION SPRING (D) SO IT DOES NOT BECOME LOST DURING DISASSEMBLY.

ASSEMBLY

1. Insert the hop-up and inner barrel assembly into the upper receiver.
2. Ensure that the bolt catch lever is in place, then slide the upper receiver back onto the lower receiver.
3. Reinstall and secure the front body pin.

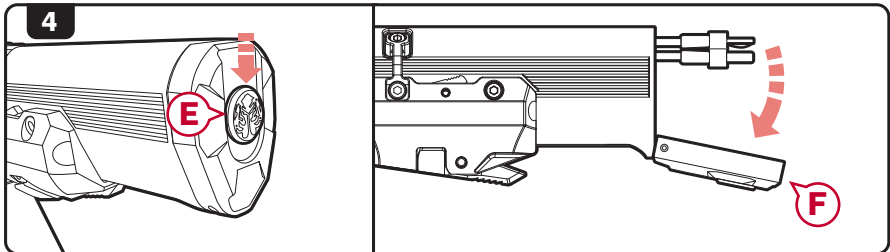
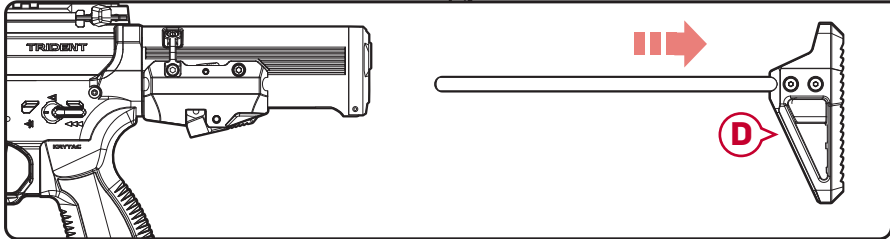
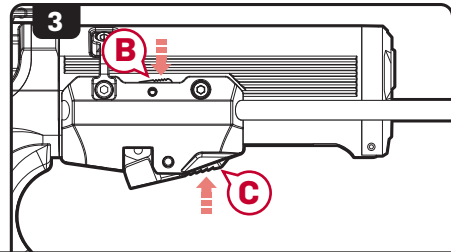
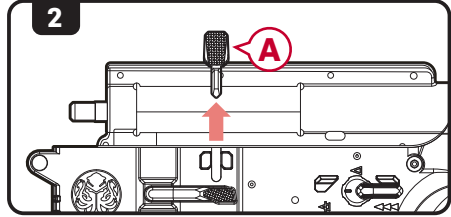


MAIN SPRING ACCESS



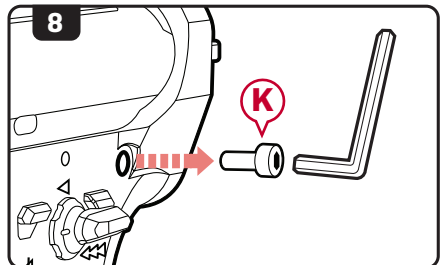
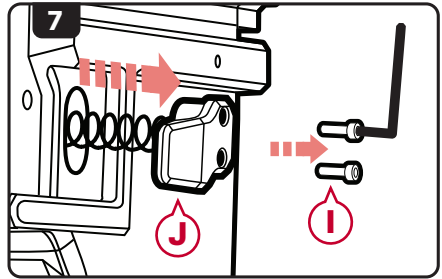
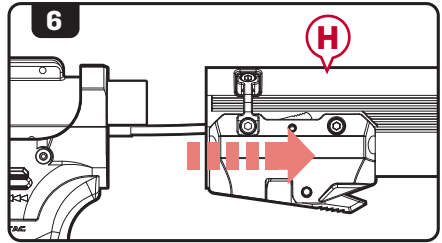
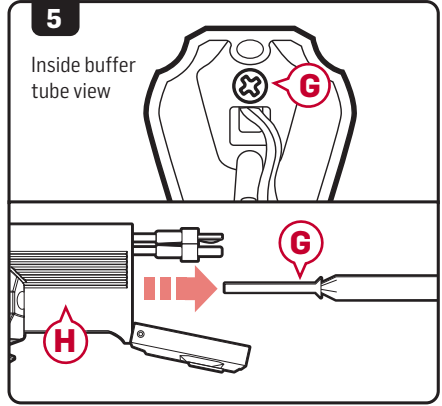
PLEASE REVIEW THE WARRANTY CARD INFORMATION BEFORE OPENING AND/OR MODIFYING THE KRYTAC AIRSOFT GUN.

1. Disassemble the airsoft gun. (see pg.13 for disassembly instructions).
2. Remove the bolt release button **(A)**.
3. Press down on the take down lever **(B)** and the stock release button **(C)**. Remove the butt stock **(D)**.
4. Press down on the stock cap release button **(E)** and swing open the stock cap **(F)**.



MAIN SPRING ACCESS

5. Use a Phillip (P2) screw driver to remove the screw **G** from inside the buffer tube **H**.
6. Remove the buffer tube **H**.
7. Remove the screw **I** from the magazine release button **J** using a Phillip screw driver, then remove the magazine release button **J**.
8. Use a 3 mm hex key to remove the rear receiver pin screw **K**.



MAIN SPRING ACCESS

9. Use a Phillips screw driver to remove 2 screws (L) on the bottom of the motor plate (M) then remove the motor plate.
10. Disconnect the motor wires (N) and remove the motor (O).

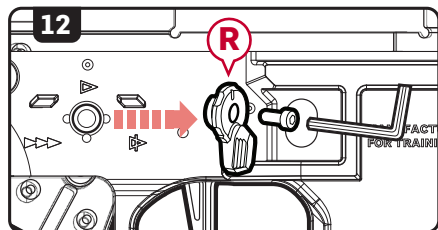
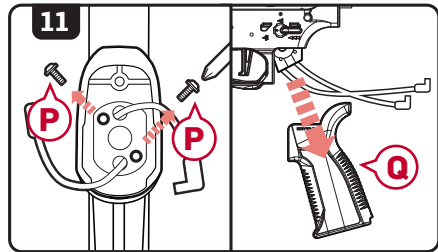
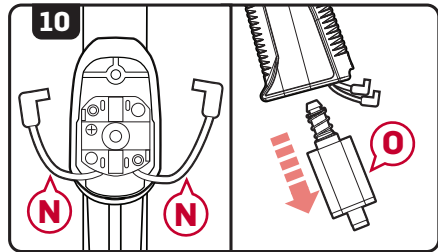
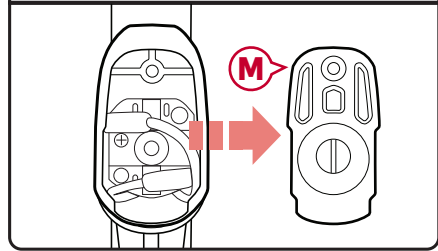
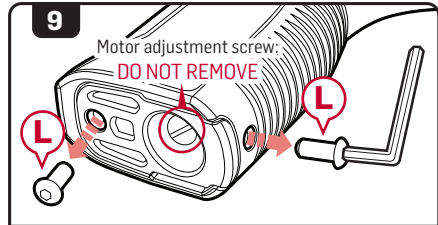
NOTE

Take note of the wire and motor orientation before disconnecting.

11. Remove 2 Phillips screws (P) at the top of the motor grip interior, then remove the motor grip (Q).
12. Remove the right side selector switch (R) using a 1.5 mm hex key.

NOTE

Take care that the selector ball and spring does not fall out and become lost during disassembly.



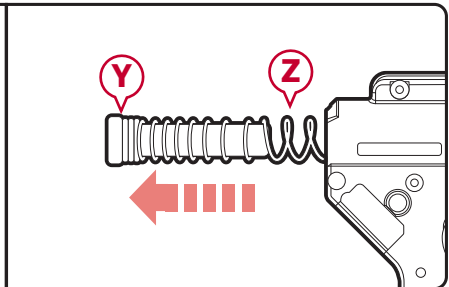
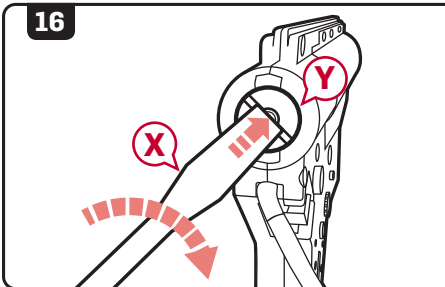
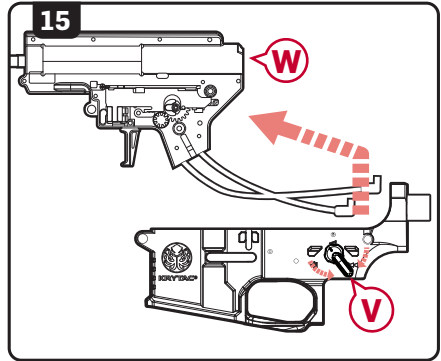
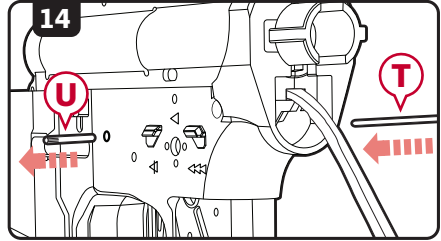
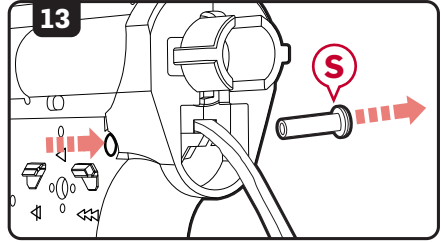
MAIN SPRING ACCESS

13. Press the rear receiver pin **(S)** in and remove it from the other side of the airsoft gun.
14. Use a 2.5 mm punch **(T)** and press the body pin **(U)** in and remove it from the other side of the airsoft gun.
15. Move the selector switch **(V)** half way between safe mode and semi-automatic mode then slide the gearbox **(W)** out of the lower receiver.
16. Use an flathead screw driver **(X)**, push the anchored spring guide **(Y)** into the gearbox, turn 90° clockwise then pull the spring guide and spring **(Z)** out.

NOTE

Spring guide is under extreme pressure. Remove with caution.

17. Re-insert the anchored spring guide with desired spring into gear box. Follow steps in reverse order to reassemble the airsoft gun.



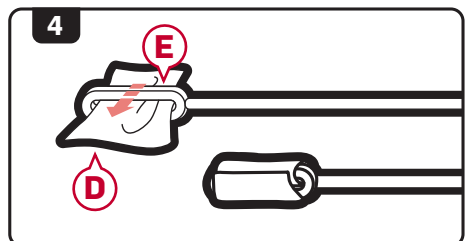
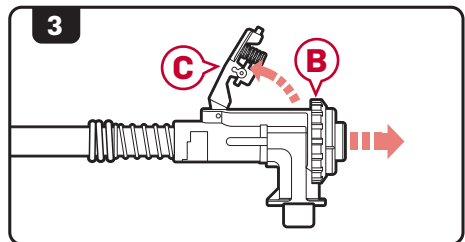
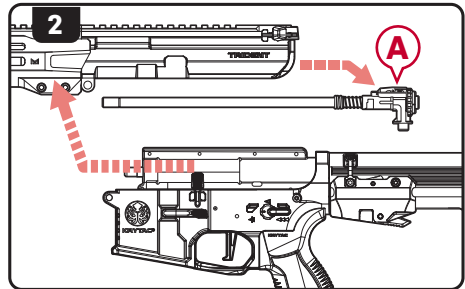
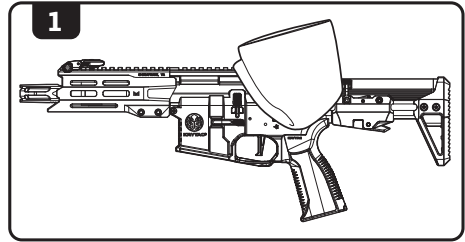
CLEANING AND MAINTENANCE

NOTE

WHILE POINTING THE AIRSOFT GUN IN A SAFE DIRECTION, REMOVE THE MAGAZINE AND CYCLE THE GEARBOX UNTIL NO BBS EXIT THE INNER BARREL. PLACE THE AIRSOFT GUN IN SAFE MODE AND DISCONNECT THE BATTERY PRIOR TO ANY CLEANING PROCEDURES.

1. Wipe down the external parts of the gun and remove any dirt and debris.
2. Disassemble the airsoft gun as described in the Disassembly section and pull out the barrel and hop-up assembly (A).
3. Pull back on the hop-up adjustment wheel (B) and lift the hop-up adjustment lever (C) up.
Take care not to lose the tension spring or the plastic spacer nub.

4. Take a lint-free cleaning patch (D) and place it through the looped end of the cleaning rod (E).

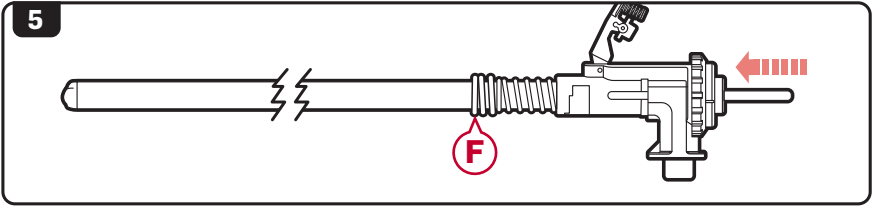


WARNING

DO NOT ADD OIL TO THE HOP-UP BUCKING. EXCESSIVE OIL ON THE HOP-UP BUCKING MAY NEGATE THE HOP-UP, DECREASING RANGE AND ACCURACY.

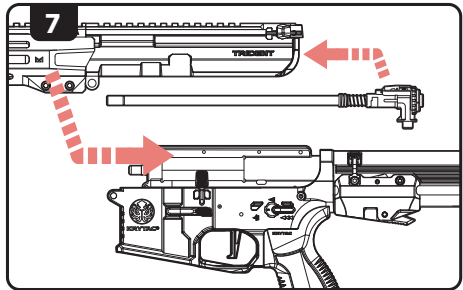
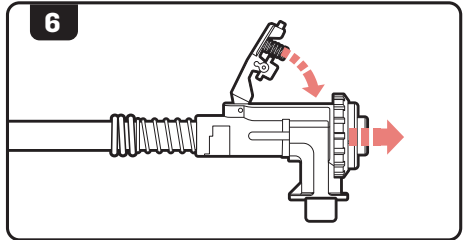
CLEANING AND MAINTENANCE

5. Run the cleaning rod through the barrel from back to front (in the same direction that BBs travel).



KEEP TRACK OF THE BARREL SPRING (F), IT CAN SEPARATE FROM THE BARREL ASSEMBLY.

6. Pull back on the hop-up adjustment wheel and lower the hop-up adjustment lever back into position.
7. Reinsert the hop-up barrel assembly into the receiver and reassemble as described in the Assembly section.



TROUBLE SHOOTING GUIDE



WARNING

WHEN TROUBLESHOOTING, FOLLOW THE SAFETY MEASURES DESCRIBED IN THIS MANUAL.

SYMPTOMS	CAUSE	SOLUTIONS
Not firing/No sound	Safety is engaged	Change selector to Semi Auto or Full Automatic Mode
	Low power or dead battery	Charge and replace battery
	Blown out fuse	Replace with new fuse
	Loose connection	Contact customer service for professional care
Motor is running but not firing	Inspect magazine	Check if magazine is properly loaded into the gun Ensure magazine is loaded with ammunition Ensure the hi-cap magazine is properly wound
Motor or battery is hot after short use	Damaged battery	Inspect and/or replace battery
	Loose connection terminal	Contact customer service for professional care
Semi-Auto feature not functioning properly	Battery voltage or discharge is too high	Condition or replace battery
Semi-Auto feature not working at all	Disconnecter is not engaged properly	Reset the disconnecter by setting the selector to safe, then to automatic, then to semi
Firing cycle slowing down	Battery is low on power	Charge or replace battery
High pitch or grinding noise	Motor level is not adjusted properly	Contact customer service for professional care
BB travels upward	Hop-up adjusted too high	Dial down the hop-up adjustment
BB travels downward	Hop-up adjusted too low	Dial up the hop-up adjustment
BB double feeding or rolling out of the barrel	Excessive grease or oil in the hopup chamber	Fire at least 200 rounds to eliminate excessive grease from the chamber Clean hop-up unit with supplied cleaning rod
	Hop-up unit is turned off	Turn hop-up unit on
Hop-up unit can't be adjusted	Hop-up adjustment arm is not set properly	Reset hop-up adjustment arm (See page 20, step 6 for reassembly)
Inner barrel is jammed or jamming	Use of recycled or low quality BBs	Use only KRYTAC branded or other high quality BBs
	Inner Barrel is contaminated with BBs or debris	Clear and/or clean inner barrel with supplied cleaning rod (See page 12 for clearing jam section and page 19 for cleaning and maintenance section)
Hi-Cap magazine not feeding	Magazine has not been wound	Wind wheel underneath magazine
	BBs are lodged inside the magazine	Shake or tap magazine to clear the jam
	Internal obstruction	Contact customer service for professional care

OPERATING UNDER HARSH CONDITIONS

When operating under harsh conditions, special maintenance may be required to match the climate conditions of a specific operational area.

Dust and Sand

In harsh dusty or sandy environments, excessive debris can cause malfunctions and/or excessive wear on parts. Keep the gun covered and protected while not in use. When performing maintenance, use lubrication sparingly as it tends to attract dirt and other particles. After use in a dusty or sandy area, always field strip the gun, as outlined in the Disassembly section, cleaning all the areas that can be reached with a soft, clean, lint-free cloth.

Heavy Rain

Never submerge or expose your gun to extremely wet environments. Exposure to such conditions may cause electrical failure and fluid to build-up inside the gearbox. Dry completely with a clean, lint-free cloth and clean inner barrel when necessary.

HEARING PROTECTION REQUIREMENT

HEARING PROTECTION REQUIREMENT FOR EUROPEAN COMMUNITY

The KRYTAC TRIDENT MK III PDW-M fulfills all relevant provisions of:

EMC Directive (2014/30/EU)
RoHS Directive (2011/65/EU)
General Product Safety Directive (2001/95/EC)

In conjunction with the following harmonized standards or technical specifications for the design and manufacture

EN 50581:2012; EN 55014-1:2006; EN 55014-2:1997

In accordance with the above mentioned standards, in some applications, noise or vibration levels may exceed the minimum Noise levels of 85db(A). If Noise levels exceed 85dB(A), appropriate ear protection must be used to prevent any damages due to sound emissions.

CONTACT INFORMATION

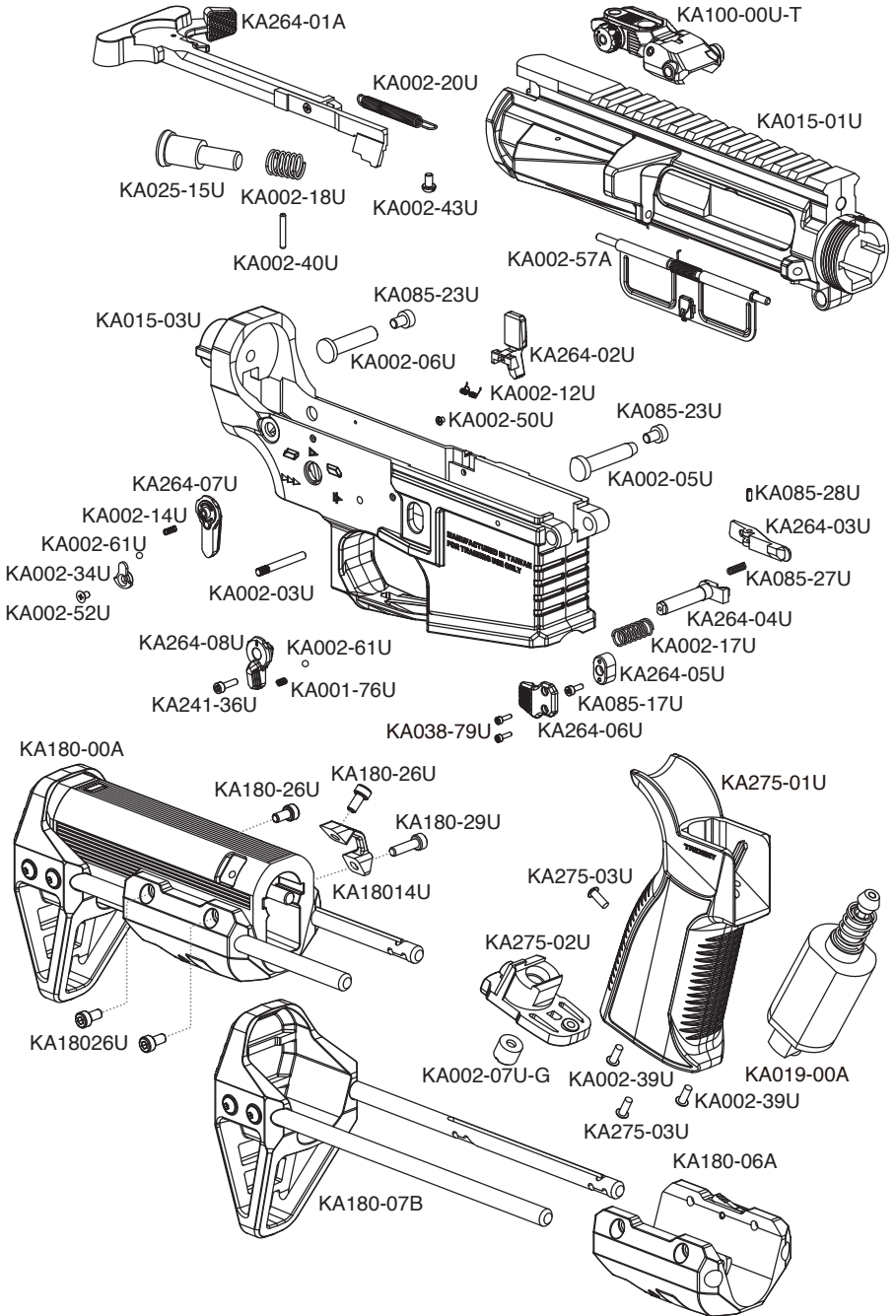
For additional troubleshooting, information, or questions regarding KRYTAC customer service:

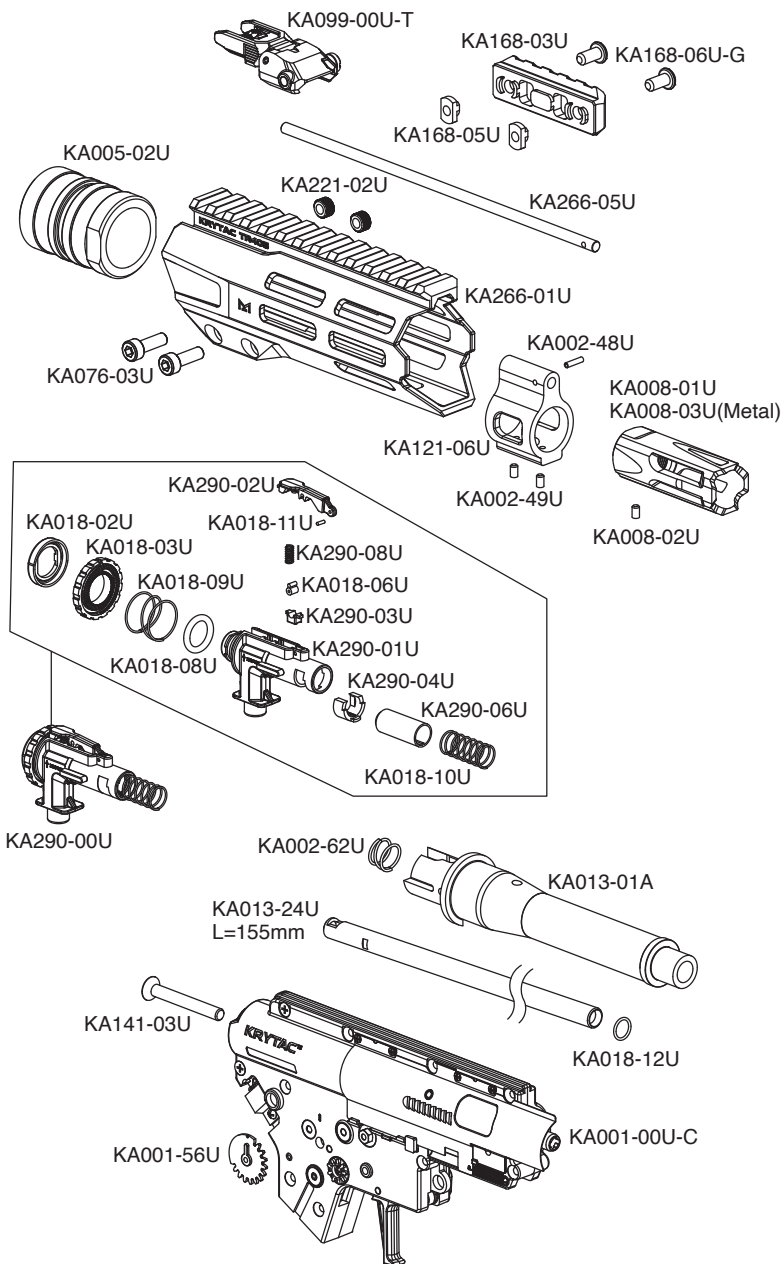
Submit a contact form at: www.krytac.com

Email us at: support@krytac.com

Visit the KRYTAC Help Desk at <https://support.krytac.com> for additional technical information and guides.

COMPONENT DIAGRAM: MK III PDW





COMPONENT LIST: MK III PDW

PART #	NAME				
KA001-00U-C	GEARBOX ASSEMBLY	KA002-34U	SELECTOR LEVER	KA141-10U-G	GEARBOX SHELL (RIGHT)
KA001-03A	SECTOR GEAR	KA002-39U	BUTTON SOCKET CAP SCREWS (2)	KA141-11U-G	GEARBOX SHELL (LEFT)
KA001-04A	SPUR GEAR	KA002-40U	FORWARD ASSIST PIN	KA141-12U	TRIGGER SPRING
KA001-07U	BOLT PLATE	KA002-43U	CHARGING HANDLE ANCHOR SCREW	KA168-03U	M-LOK SIDE RAIL (MEDIUM)
KA001-08U	BOLT PLATE GUIDE	KA002-48U	GAS BLOCK PIN	KA168-05U	SLIDE RAIL NUT (2)
KA001-15U	MAIN SPRING SHIM	KA002-49U	GAS BLOCK SCREWS (2)	KA168-06U-G	SIDE RAIL SCREW (2)
KA001-16U	PISTON HEAD O-RING	KA002-50U	BOLT STOP SCREW	KA180-00A	COMPACT CARBINE STOCK (GEN 2)
KA001-17U	PISTON HEAD SHIM	KA002-52U	SELECTOR SCREW (LEFT)	KA180-06A	STOCK BODY
KA001-18U	TAPPET PLATE	KA002-57A	DUST COVER ASSEMBLY	KA180-07B	BUTT STOCK
KA001-24U	BOLT PLATE LOCK	KA002-61U	SELECTOR BALL (2)	KA180-14U	SLING MOUNT
KA001-25U	BOLT PLATE LOCK BUTTON		HOP-UP OUTER TENSION SPRING	KA180-26U	STOCK BODY SCREW (4)
KA001-26A	CYLINDER HEAD ASSEMBLY	KA002-62U		KA180-29U	SLING MOUNT SCREW
KA001-32U	PISTON HEAD	KA005-02U	BARREL NUT	KA221-02U	TR4 RAIL NUT (M5)(2)
KA001-33U	WIRING COVER	KA008-01U	FLASH HIDER	KA225-95U	BEARING
KA001-35U	SHIM (6)	KA008-02U	SET SCREW	KA236-01U	PISTON BODY
KA001-37U	BEARING (4)	KA008-03U	FLASH HIDER (METAL)	KA241-36U	SELECTOR SCREW (RIGHT)
KA001-39U	ANTI-REVERSE LATCH	KA013-01A	PDW OUTER BARREL	KA264-01B	CHARGING HANDLE ASSEMBLY
KA001-49U	ANTI-REVERSE LATCH PIN	KA013-24U	INNER BARREL (155MM)	KA264-02U	BOLT CATCH ENLARGED
KA001-53A	SELECTOR GEAR (LEFT)	KA015-01U	UPPER RECEIVER	KA264-03U	AMBI MAGAZINE CATCH
KA001-56U	SELECTOR GEAR (RIGHT)	KA015-03U	LOWER RECEIVER	KA264-04U	AMBI MAGAZINE CATCH BODY
KA001-57U	PISTON HEAD NUT	KA018-02U	ADJUSTMENT CAP	KA264-05U	AMBI MAGAZINE CATCH BOTTOM
KA001-59U	CYLINDER	KA018-03U	ADJUSTMENT WHEEL	KA264-06U	AMBI MAGAZINE CATCH EXTENDED BUTTON
KA001-68U	ANTI-REVERSE LATCH SPRING	KA018-06U	NUB	KA264-07U	FIRE SELECTOR G2 (LEFT)
KA001-71U	MAIN SPRING	KA018-08U	ADJUSTMENT RETENSION O-RING	KA264-08U	FIRE SELECTOR G2 (RIGHT)
KA001-74U	TAPPET PLATE SPRING	KA018-09U	ADJUSTMENT SPRING	KA266-01U	TR4 PDW RAIL (5.5")
KA001-75U	BOLT RETURN SPRING	KA018-10U	HOP-UP TENSION SPRING	KA266-05U	TR4 PDW-M GAS TUBE (114.7MM)
KA001-76U	BOLT PLATE LOCK SPRING	KA018-11U	ADJUSTMENT LEVEL PIN	KA275-01U	KRYTAC GRIP GEN2
KA001-81U	BUTTON MICRO SCREW (2)	KA018-12U	FRONT BARREL O-RING	KA275-02U	MOTOR PLATE ASSEMBLY
KA001-82U	BOLT PLATE SCREW (4)	KA019-00A	MOTOR	KA275-03U	PISTOL GRIP SCREW
KA001-83U	BOLT PLATE LOCK SCREW	KA025-15U	FORWARD ASSIST BUTTON	KA290-00U	GEN 2 HOP-UP ASSEMBLY
KA001-84U	FLAT MICRO SCREW (2)	KA025-19U	TRIGGER	KA290-01U	GEN 2 HOP-UP MAIN BODY
KA001-86U	GEARBOX SHELL SCREW (LONG)(6)	KA038-79U	MAGAZINE CATCH SCREW	KA290-02U	GEN 2 HOP-UP ARM
KA001-87U	GEARBOX SHELL SCREW (SHORT)(4)	KA076-03U	TR4 RAIL SCREW (M5X15)	KA290-03U	GEN 2 HOP-UP SPACER NUB
KA001-88U	PISTON HEAD SCREW	KA084-11A	AIR NOZZLE	KA290-04U	GEN 2 HOP-UP BARREL CLIP
KA001-95U	ARL SPACER	KA085-17U	MAGAZINE RELEASE BUTTON SCREW	KA290-06U	GEN 2 HOP-UP BUCKING
KA002-03U	GEARBOX PIN	KA085-23U	RECEIVER PIN CAP SCREW	KA290-08U	GEN 2 HOP-UP ARM SPRING
KA002-05U	FRONT RECEIVER PIN	KA085-27U	MAGAZINE RELEASE LEVER SPRING	KA291-01A	ELECTRONIC CONTROL UNIT AND WIRING ASSEMBLY
KA002-06U	REAR RECEIVER PIN	KA085-28U	MAGAZINE RELEASE PIN	KA291-02U	INSULATING SHEET
KA002-07U-G	MOTOR PLATE SCREW (1)	KA099-00U-T	FRONT FLIP-UP SIGHT	KA291-11U	SELECTOR PLATE FOR ECU
KA002-12U	BOLT CATCH SPRING	KA100-00U-T	REAR FLIP-UP SIGHT	KA291-12U	MICROSWITCH TRIGGER SPRING
KA002-14U	SELECTOR DETENTE SPRING	KA121-06U	GAS BLOCK		
KA002-17U	MAGAZINE RELEASE SPRING	KA141-01A	SPRING GUIDE ASSEMBLY		
KA002-18U	FORWARD ASSIST SPRING	KA141-03U	BUFFER TUBE SCREW		
KA002-20U	CHARGING HANDLE SPRING	KA141-04A	BEVEL GEAR		
		KA141-09U	PISTON TOOTH RACK		

www.krytac.com

© Copyright 2024
KRISS INDUSTRIES ASIA
Subject to change

V.01_2024.10.19

