



OWNER'S MANUAL



REC7 MK3 SBR REC7 MK3 CARBINE



Manufactured by KRYTAC under license
through Evike.com Inc.

TABLE OF CONTENTS

| | |
|--|----|
| Safety Rules | 2 |
| Specifications | 4 |
| Electronic Control Unit | 6 |
| Velocity and Energy Output Chart | 7 |
| Package Contents | 7 |
| Loading the Magazine | 8 |
| Fire Selector Switch..... | 9 |
| Trigger Pull Adjustment | 9 |
| Battery Installation | 10 |
| Hop-Up System | 11 |
| Clearing Jammed BBs..... | 12 |
| Disassembly | 13 |
| Assembly | 14 |
| Main Spring Access | 15 |
| Cleaning and Maintenance..... | 18 |
| Trouble Shooting Guide..... | 20 |
| Operating Under Harsh Conditions | 21 |
| Hearing Protection Requirement | 21 |
| Contact Information | 21 |
| Parts Diagrams and Lists | 22 |



WARNING

THIS PRODUCT IS NOT INTENDED FOR USE BY UNTRAINED PERSONS (INCLUDING CHILDREN) WITH OR WITHOUT PHYSICAL OR MENTAL HANDICAPS. THESE HANDICAPS INCLUDE REDUCED PHYSICAL, SENSORY OR MENTAL CAPABILITIES, OR LACK OF EXPERIENCE AND KNOWLEDGE OF THE PRODUCT AND SAFETY GUIDELINES. ALL USERS SHOULD HAVE TRAINED SUPERVISION OR INSTRUCTIONS CONCERNING THE USE OF THE APPLIANCE BY A PERSON RESPONSIBLE FOR HIS OR HER SAFETY.

SAFETY RULES

Please read the entire product manual before operating the airsoft electric gun (AEG). This manual covers important safety, operational, and maintenance topics. It is important that the user reads and understands the manual in order to safely handle and operate the airsoft electric gun (AEG). Failure to follow the safety guidelines and/or operational instructions in this manual may result in serious personal injury or damage to the airsoft electric gun (AEG).

Safety Guidelines

EYE PROTECTION

Always wear eye protection while shooting, operating, and maintaining your airsoft guns.

EAR PROTECTION

With noise levels exceeding 85dB(A), appropriate ear protection must be used to prevent any damage due to sound emissions.

FIREARM SAFETY RULES

Always assume that the airsoft gun is loaded. Never assume the chamber is empty based on memory or from someone else's word. An airsoft gun can still fire with the magazine removed.

KEEP YOUR FINGER OFF THE TRIGGER

Remove your finger from the inside of the trigger guard until your sights are aligned on target and you are ready to fire.

MUZZLE CONTROL

Always keep the muzzle of the airsoft gun pointed in a safe direction. Never point the airsoft gun towards anything you do not intend to shoot.

KNOW YOUR TARGET AND ITS SURROUNDINGS (SAFETY DISTANCE)

Take note of objects in front of and beyond your target. Airsoft guns can shoot up to and beyond 150 feet/45.5 meters and may travel further than intended without an adequate backstop. Never shoot an airsoft gun directly at targets such as rocks, glass, water, or other hard surfaces that may ricochet BBs in unpredictable directions.



WARNING

SAFETY IS YOUR RESPONSIBILITY

The EMG airsoft gun is designed and manufactured to EMG's high standards. It was carefully inspected before it was packaged and shipped from our factory. It is the sole responsibility of the user for its safe use and handling. This airsoft gun is safe unless handled irresponsibly or misused.

BEWARE OF BARREL OBSTRUCTIONS

Ensure that the barrel of your airsoft gun is free and clear of any obstructions prior to firing the airsoft gun. Failure to do so may cause a malfunction, and in some cases damage the airsoft gun.

KEEP THE SAFETY ON

Keep the fire selector set to safe until your sights are aligned on target and you are ready to fire.

SAFETY RULES

FAILURE TO FIRE

If the airsoft gun fails to fire, misfires, or malfunctions, do not look into/down the barrel of the airsoft gun. BBs can jam in the chamber and can launch suddenly while under pressure causing serious injury.

FUSE

DO NOT REMOVE OR BYPASS THE FUSE. It is an integral part of the system. Alterations to the fuse will void warranty and may result in operational failure and critical damage to internal components.

MAINTAIN YOUR AIRSOFT GUN PROPERLY

Maintaining your airsoft gun as outlined in the manual ensures that your airsoft gun will be safe to shoot and perform to its designed specifications. Alterations, modifications, or adjustments may damage your airsoft gun, making it unsafe to shoot and/or voiding all warranty claims.

STORAGE AND TRANSPORT

Keep the fire selector on the airsoft gun set to safe, with the magazine and battery removed when storing your airsoft gun. Always store your airsoft gun in a safe place and out of the reach of children. When transporting your airsoft gun make sure that it is in a designated airsoft gun case. Never brandish your airsoft gun in public.



WARNING

IT IS YOUR RESPONSIBILITY TO SAFELY STORE AND TRANSPORT YOUR AIRSOFT GUN.

ORANGE TIP

Any alteration of the coloration or markings required by state and/or federal law may be deemed illegal in a court of law. All risks and responsibility of any alteration to the product will be assumed by the operators, owners and/or user of the product.



WARNING

THE ORANGE TIP DOES NOT DISTINGUISH YOUR AIRSOFT GUN AS A TOY, ALWAYS TREAT YOUR AIRSOFT GUN AS IF IT IS A REAL FIREARM.

HAZARDS OF BEING MISTAKEN FOR A REAL FIREARM

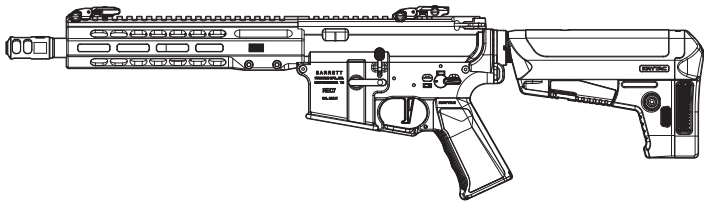
Due to the nature and design of some airsoft guns, they may be mistaken as a real firearm. It is strongly advised to operate an airsoft gun in the safety and privacy of your own home, or at a legally sanctioned location or game field. Police, Peace Officers, and Law Enforcement Officers are trained to treat objects that resemble a firearm as one. In the event that you are approached by a Law Enforcement Official, completely comply with their instructions. Never point an airsoft gun at a Law Enforcement Official. Confrontation with a Law Enforcement Official may result in serious injury or death.

ALCOHOL, MEDICATIONS AND DRUGS

Do not handle or operate your airsoft gun while under the influence of alcohol, medication, or drugs that may impair judgment.

SPECIFICATIONS

BARRETT REC7 MK3 SBR



| | |
|-----------------------|-----------------------------------|
| Caliber | 6 mm |
| Overall Length | 722 mm (28.43") - 804 mm (31.65") |
| Overall Height | 186 mm (7.3") |
| Weight | 2.6 kg (5.7 lbs) |
| Outer Barrel Length | 266.7 mm (10.5") |
| Inner Barrel Length | 280 mm |
| Inner Barrel Diameter | 6.03 mm |
| Rate of Fire | 21+ RPS |

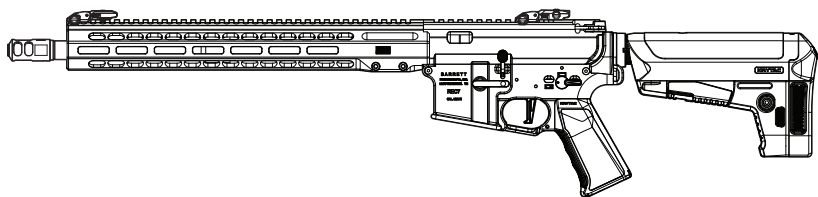
PERFORMANCE DETAILS ARE BASED ON U.S. SPECIFICATIONS AND CAN BE MODIFIED TO MEET THE LAWS AND REGULATIONS OF YOUR LOCAL REGION.

PRODUCT FEATURES

| | |
|--|--|
| Barrett licensed alloy receiver | Microswitch E-trigger |
| Barrett REC7 DI 10" M-Lok rail | Easy spring access |
| KRYTAC pistol grip | Padded cylinder head |
| KRYTAC battery stock | Relief-cut cylinder window |
| Ambidextrous fire selector | Anti-corrosion mechbox coating |
| Licensed CMC adjustable trigger | Lightweight, full metal rack piston |
| MIL-STD 1913 Picatinny top rail | Improved rotary hop-up with tempera- ture and wear-resistant hop-up bucking |
| KRYTAC Nautilus mechbox with 8mm bearings, Gate Titan-ready | KRYTAC neo high torque motor |
| Electronic Control Unit (ECU) | |

SPECIFICATIONS

BARRETT REC7 MK3 CARBINE



| | |
|-----------------------|---------------------------------|
| Caliber | 6 mm |
| Overall Length | 856 mm (33.7") - 938 mm (36.9") |
| Overall Height | 186 mm (7.32") |
| Weight | 2.8 kg (6.2 lbs) |
| Outer Barrel Length | 406 mm (16") |
| Inner Barrel Length | 416 mm |
| Inner Barrel Diameter | 6.03 mm |
| Rate of Fire | 21+ RPS |

PERFORMANCE DETAILS ARE BASED ON U.S. SPECIFICATIONS AND CAN BE MODIFIED TO MEET THE LAWS AND REGULATIONS OF YOUR LOCAL REGION.

PRODUCT FEATURES

| | |
|---|---|
| Barrett licensed alloy receiver | Microswitch E-trigger |
| Barrett REC7 DI 15" M-Lok rail | Easy spring access |
| KRYTAC pistol grip | Padded cylinder head |
| KRYTAC battery stock | Relief-cut cylinder window |
| Ambidextrous fire selector | Anti-corrosion mechbox coating |
| Licensed CMC adjustable trigger | Lightweight, full metal rack piston |
| MIL-STD 1913 Picatinny top rail | Improved rotary hop-up with temperature and wear-resistant hop-up bucking |
| KRYTAC Nautilus mechbox with 8mm bearings, Gate Titan-ready | KRYTAC neo high torque motor |
| Electronic Control Unit (ECU) | |

ELECTRONIC CONTROL UNIT (ECU)

The ECU features new functionality and protection for your KRYTAC airsoft gun.

FULL CYCLE DETECTION AND PARTIAL ACTIVE BREAKING

Full cycle detection and partial active braking ensure the gearbox completes its cycle without interruption, preventing motor inertia from causing double firing in semi-auto mode and reducing the risk of rapid overheating.

BATTERY AND POWER DETECTION

When connecting a 7.4v battery: The motor will emit two beeps upon detecting a connection. When the battery level is low, the motor will emit a short beep every half second while the trigger is active.

When connecting a 11.1v battery: The motor will emit three beeps upon detecting a connection. When the battery level is low, the motor will emit a short beep every half second while the trigger is active.

| Battery Type | Battery Connection | Battery Low Power Detection |
|---------------------------|-----------------------|--------------------------------|
| 7.4v 2 cell lipo battery | 2 beeps on connection | 1 short beep every 0.5 seconds |
| 11.1v 3 cell lipo battery | 3 beeps on connection | 1 short beep every 0.5 seconds |



WARNING

HIGH VOLTAGE BATTERY: WHEN THE BATTERY CONNECTED IS HIGHER THAN RECOMMENDED USABLE VOLTAGE, THE MOTOR WILL EMIT A SINGLE CONTINUOUS BEEP AND THE MOTOR WILL NOT ENGAGE.

GEAR PROTECTION AUTO POWER-OFF

When the trigger is held down for two seconds and no gear movement is detected, the power is cut off. This feature is designed to prevent further or more significant harm in case of mechanical malfunctions that could occur by continuing to press the trigger.

ECU SLEEP MODE

When the selector switch is turned to the safety position, the electronic control unit will enter sleep mode to lower power consumption, reducing parasitic discharge and prolonging battery life

VELOCITY AND ENERGY OUTPUT CHART

Your EMG product has been configured to comply with your region's energy output regulations. The table below is a reference to the energy output specifications organized by region.

| Country | Max Velocity | Energy Output |
|---|--------------|---------------|
| Japan, Italy | 85 m/s | 0.73 Joules |
| UK | 110 m/s | 1.24 Joules |
| Austria, Belgium, Bosnia, Brazil, Bulgaria, Canada, Chile, Croatia, Cyprus, Czech Republic, Denmark, Estonia, Finland, France, Germany, Greece, Guatemala, Herzegovina, Hong Kong, Hungary, Iceland, Israel, Latvia, Liechtenstein, Lithuania, Macedonia, Moldavia, Netherlands, New Zealand, Norway, Paraguay, Philippines, Poland, Portugal, Romania, Russia, Serbia, Slovakia, Slovenia, South Africa, South Korea, Spain, Sweden, Switzerland, Turkey, U.S.A. | 120 m/s | 1.45 Joules |

PACKAGE CONTENTS

- [1] EMG Barrett REC7 MK3 SBR / MK3 Carbine airsoft electric gun (AEG)
- [1] Set of licensed KRISS low profile folding sights
- [1] Magazine
- [1] User's manual
- [1] Cleaning rod

LOADING THE MAGAZINE

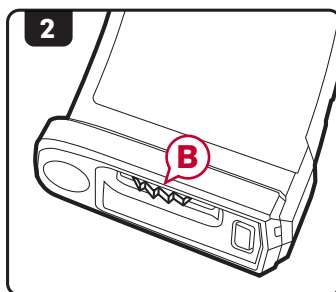
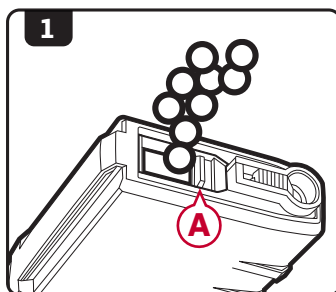
High-Cap

1. Place the hi-cap magazine with the trap door (A) facing upward. Open the trap door and dispense BBs into the BB well.
2. When full, close the trap door and turn the winding wheel (B) forward until the 'clicking' changes tone.



WARNING

DO NOT OVER LOAD THE MAGAZINE

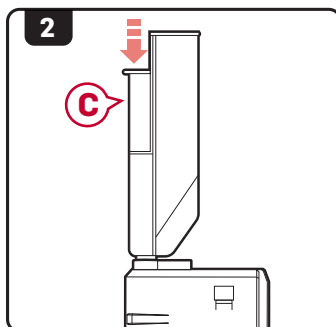
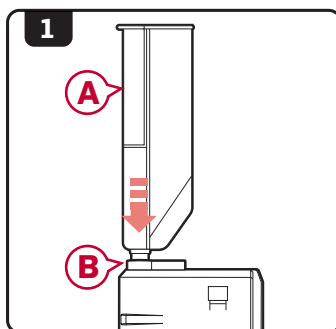


Mid-Cap

1. Using a speed loader (A) or other magazine loader, insert the nozzle into the opening of the magazine (B).
2. Press down on the loader plunger (C) to load BBs into the magazine.
3. Stop once the magazine is full, do not force more into the magazine.

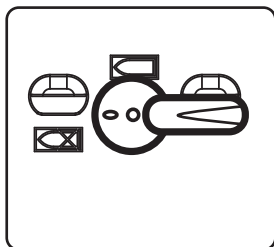
NOTE

Magazine loaders for non-winding magazines may have their own methods of operation. Be sure to follow the manufacturer's instructions when applicable.



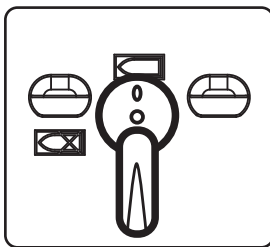
FIRE SELECTOR SWITCH

SAFE MODE



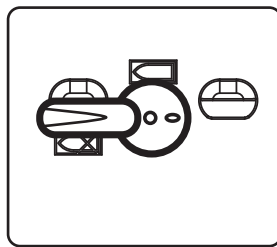
When in safe mode, the trigger will not engage and the airsoft gun will not fire.

SEMI-AUTO MODE



While in semi-auto mode, the airsoft gun will only fire one shot for each time the trigger is engaged.

FULL-AUTO MODE



In full-auto mode, the gun will continuously fire as long as the trigger remains engaged.

SAFETY TIP

It is advised when you are not ready to fire, keep the fire selector switch on the airsoft gun in the safe position.



WARNING

DO NOT ENGAGE THE TRIGGER WHILE SWITCHING BETWEEN MODES ON THE FIRE SELECTOR.

TRIGGER PULL ADJUSTMENT

NOTE

Before adjusting the trigger pull, set the fire select to SAFE, remove the magazine and disconnect the battery.

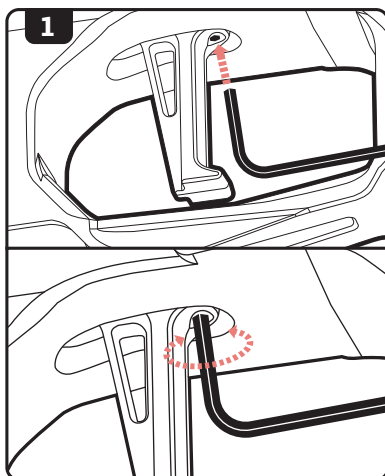
1. Use a 1.5mm Allen wrench to adjust the trigger pull length.

Turn clockwise to shorten the pull.

Turn counter-clockwise to lengthen the pull.

WARNING

TAKE CARE NOT TO OVERTORQUE THE ADJUSTMENT SCREW.



BATTERY INSTALLATION



WARNING

ENSURE THAT THE STOCK IS IN THE FULLY COLLAPSED POSITION BEFORE OPENING THE STOCK COVER. DO NOT REMOVE THE STOCK COMPLETELY FROM THE GUN.

1. Set the fire selector to safe mode and depress the stock cover release button **(A)** on both sides of the stock to lift and remove the cover.
2. Connect a small battery with female T-plug **(B)** to the male T-plug **(C)**.
3. Curl the connection wires against the side of the battery and insert together into the stock.
4. Replace the stock cover by first placing the tab **(C)** of the cover into the stock and then rocking the stock cover down into position. Ensure that the stock cover release buttons snap securely into place.

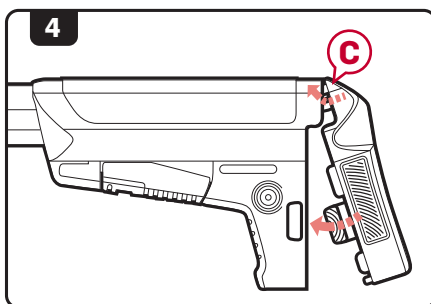
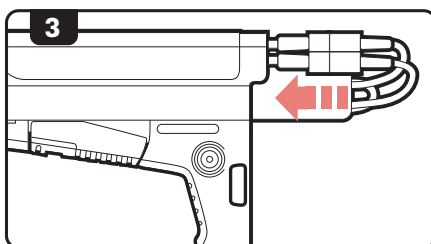
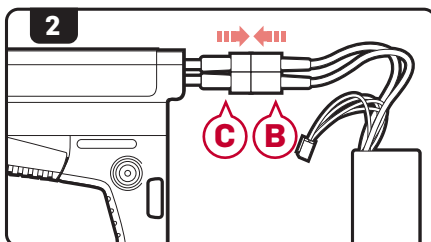
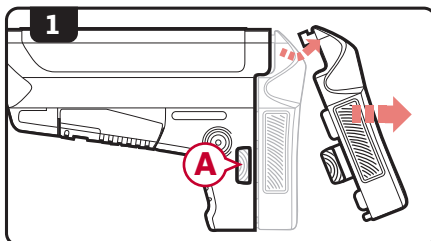
NOTICE

If your battery utilizes mini Tamiya plug then a T-plug to Tamiya plug adapter will be necessary.



WARNING

EXCESSIVE PULLING OR TUGGING OF THE BATTERY WIRES WHEN INSERTING OR REMOVING THE BATTERY CAN CAUSE THE FUSE HOUSING TO COME LOOSE OR DAMAGE TO THE GUN.

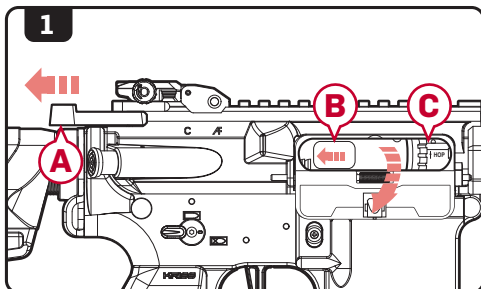


HOP-UP SYSTEM

The advanced KRYTAC rotary hop-up unit is a standard feature in the Barrett REC7 DI series of AEGs. Proper adjustment of the hop-up will allow the AEGs to fire in a variety of shooting environments to obtain optimal BB trajectory.

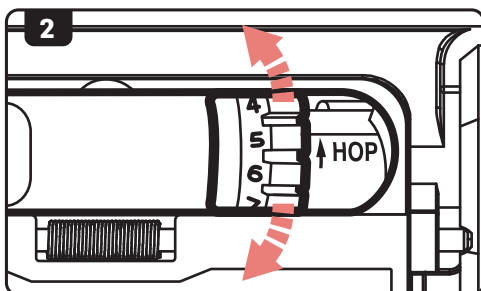
Hop-Up Adjustment

1. Pull the charging handle **(A)** rearward locking the bolt plate **(B)**. This will provide access to the hop-up adjustment dial **(C)**.

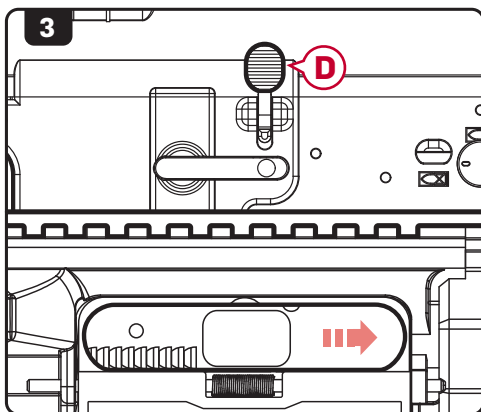


2. Turn the dial up or down, an audible click will confirm each adjustment.

Increasing the number on the dial will increase the amount of hop-up on the BB. Decreasing the number will lower the amount of hop-up on the BB.



3. Once the hop-up has been set, depress the bolt catch release **(D)** to return the bolt plate back to its fully seated position.



DISASSEMBLY

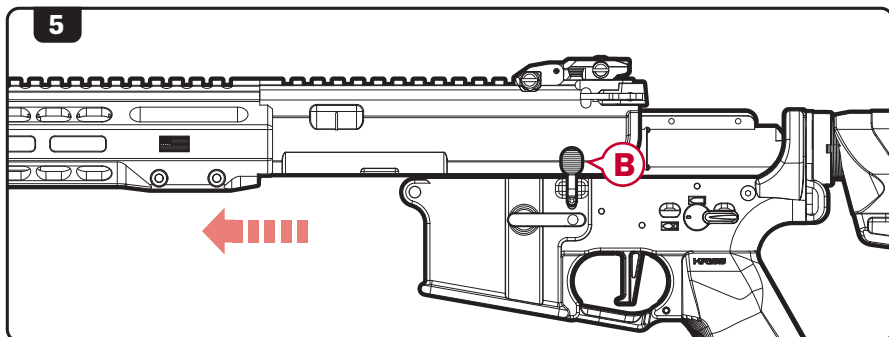
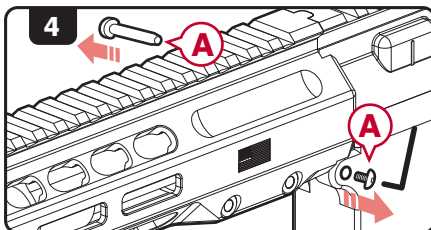
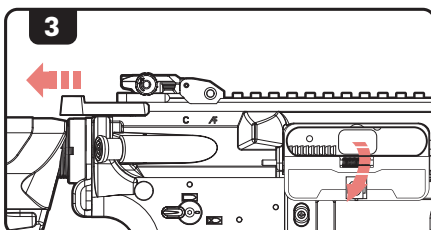
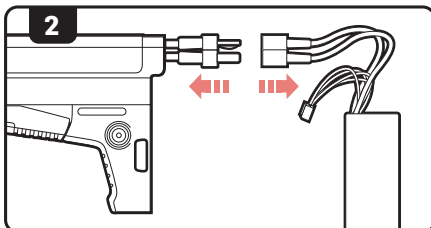
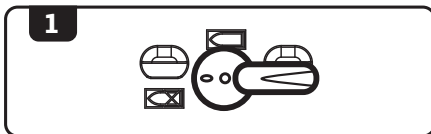
NOTE

Before opening up the receiver, remove the magazine and fire the airsoft gun in a safe direction to ensure that the hop-up chamber is clear of any BBs.

1. Set the AEG to safe mode.
2. Remove the stock cover and disconnect the battery.
3. Pull the charging handle rearward to lock the bolt plate back.
4. Remove **ONLY** the front pin **(A)** from the receiver.
5. Slide the upper receiver forward and away from the lower receiver.

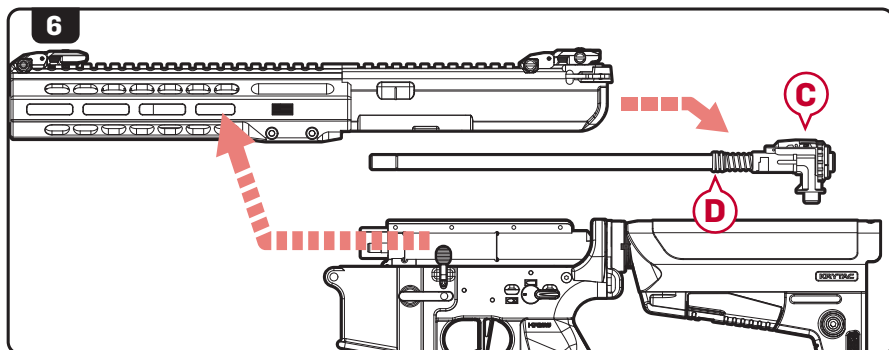
NOTE

The bolt catch lever **(B)** may fall off of the lower receiver when separating the receivers. Avoid turning or jostling the lower receiver to help prevent loss of the bolt catch lever.



DISASSEMBLY

6. Slide the hop-up and inner barrel assembly **C** out of the upper receiver.

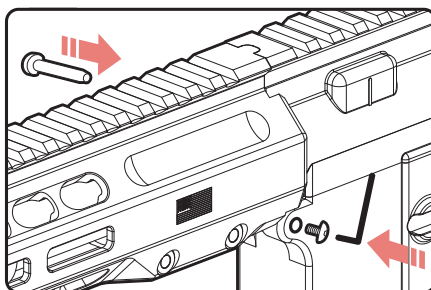
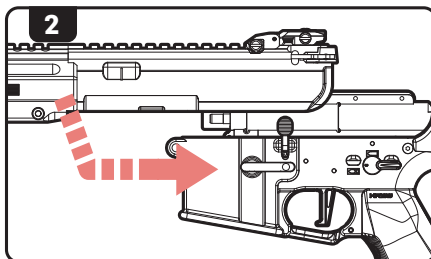
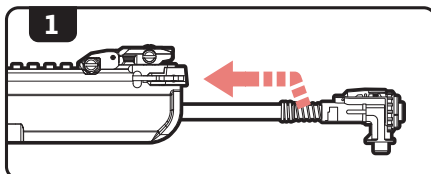


NOTE

KEEP TRACK OF THE HOP-UP TENSION SPRING **D** SO IT DOES NOT BECAME LOST DURING DISASSEMBLY.

ASSEMBLY

1. Insert the hop-up and inner barrel assembly into the upper receiver.
2. Ensure that the bolt catch lever is in place, then slide the upper receiver back onto the lower receiver.
3. Reinstall and secure the front body pin.



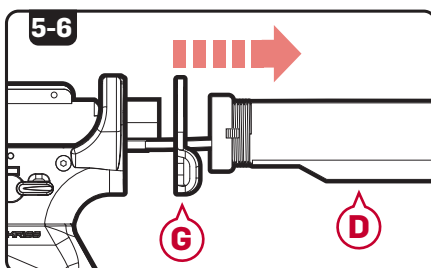
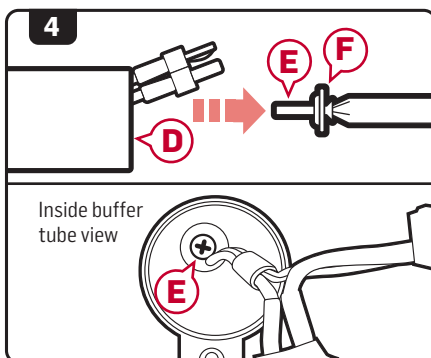
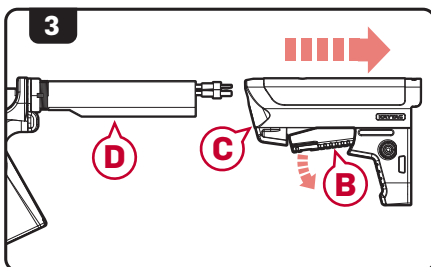
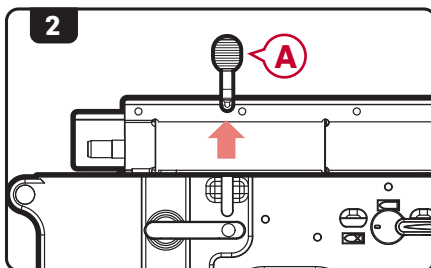
MAIN SPRING ACCESS



WARNING

PLEASE REVIEW THE WARRANTY CARD INFORMATION BEFORE OPENING AND/OR MODIFYING THE KRYTAC AIRSOFT GUN.

1. Disassemble the airsoft gun. (see pg.13 for disassembly instruction).
2. Remove the bolt release button **(A)**.
3. Pull down on the tab of the stock adjustment lever **(B)**, slide the stock **(C)** rearward and off the buffer tube **(D)**.
4. Use a Phillip (P2) screw driver to remove screw **(E)** and washer **(F)** from inside the buffer tube **(D)**.
5. Remove the buffer tube **(D)**.
6. Remove the sling plate **(G)**.



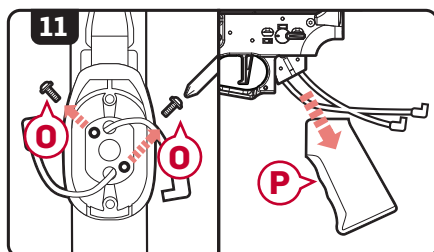
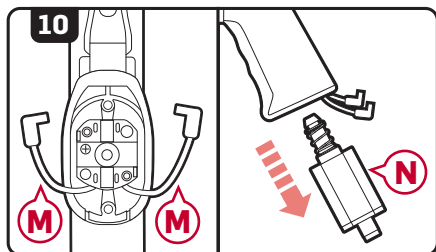
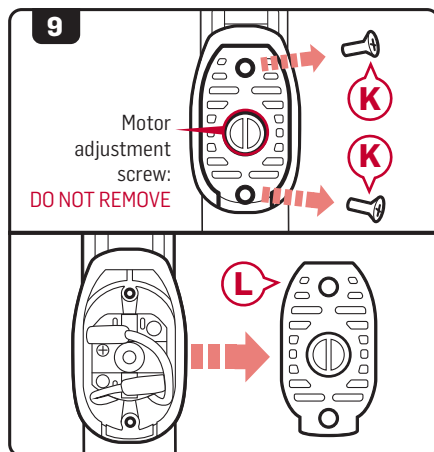
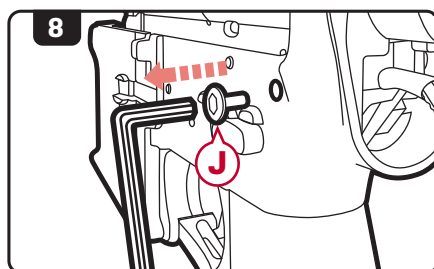
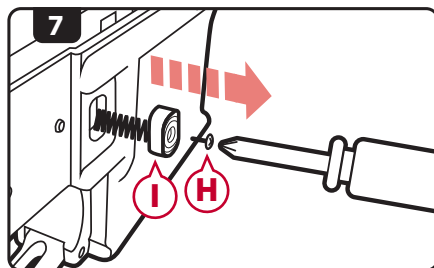
MAIN SPRING ACCESS

7. Remove the screw **(H)** from the magazine release button **(I)** using a Phillip screw driver, then remove the magazine release button **(I)**.
8. Use a 2.5 mm hex key to remove the rear receiver pin screw **(J)**.
9. Use a Phillips screw driver to remove 2 screws **(K)** on the bottom of the motor plate **(L)** then remove the motor plate.

NOTE

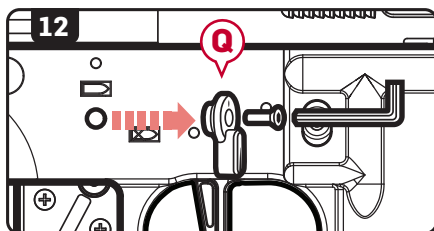
Take note of the wire and motor orientation before disconnecting.

10. Disconnect the motor wires **(M)** and remove the motor **(N)**.
11. Remove 2 Phillips screws **(O)** at the top of the motor grip interior, then remove the motor grip **(P)**.

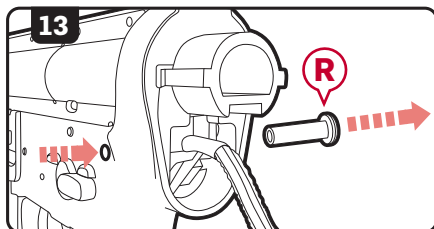


MAIN SPRING ACCESS

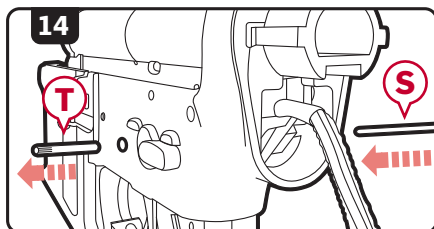
12. Remove the right side selector switch **Q** using a 1.5 mm hex key.



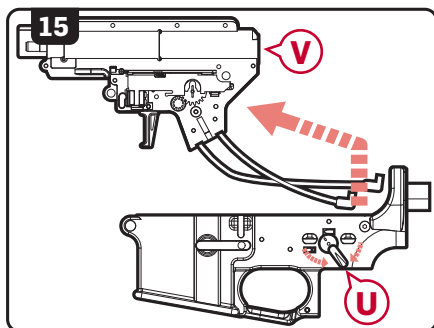
13. Press the rear receiver pin **R** in and remove it from the other side of the airsoft gun.



14. Use a 2.5 mm punch **S** and press the body pin **T** in and remove it from the other side of the airsoft gun.



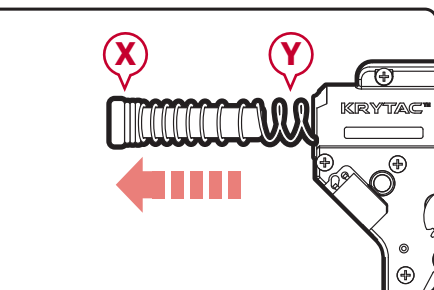
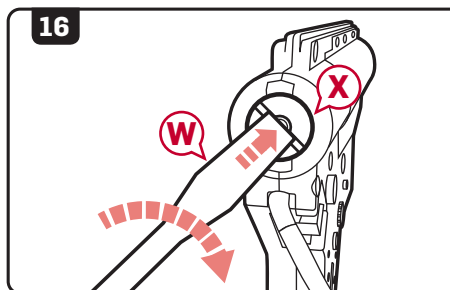
15. Move the selector switch **U** half way between safe mode and semi-automatic mode then slide the gearbox **V** out of the lower receiver.



NOTE

Spring guide **X** is under extreme pressure. Remove with caution.

17. Re-insert the anchored spring guide with desired spring into gear box. Follow steps in reverse order to reassemble the airsoft gun.



CLEANING AND MAINTENANCE

NOTE

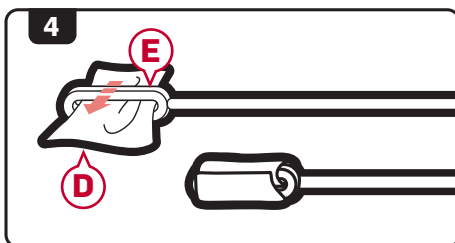
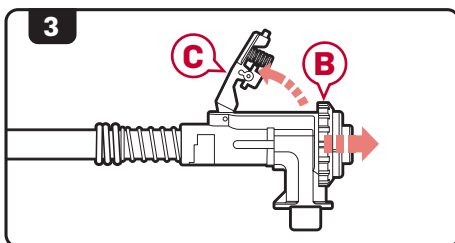
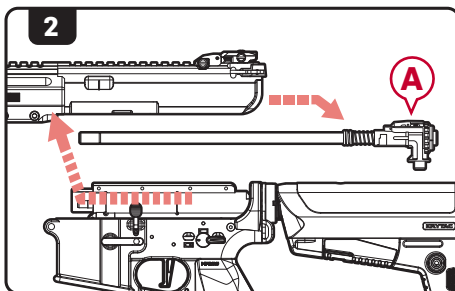
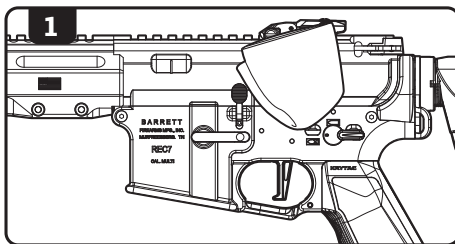
WHILE POINTING THE AIRSOFT GUN IN A SAFE DIRECTION, REMOVE THE MAGAZINE AND CYCLE THE GEARBOX UNTIL NO BBS EXIT THE INNER BARREL. PLACE THE AIRSOFT GUN IN SAFE MODE AND DISCONNECT THE BATTERY PRIOR TO ANY CLEANING PROCEDURES.

1. Wipe down the external parts of the gun and remove any dirt and debris.
2. Disassemble the airsoft gun as described in the Disassembly section and pull out the barrel and hop-up assembly (A).
3. Pull back on the hop-up adjustment wheel (B) and lift the hop-up adjustment lever (C) up.
4. Take a lint-free cleaning patch (D) and place it through the looped end of the cleaning rod (E).



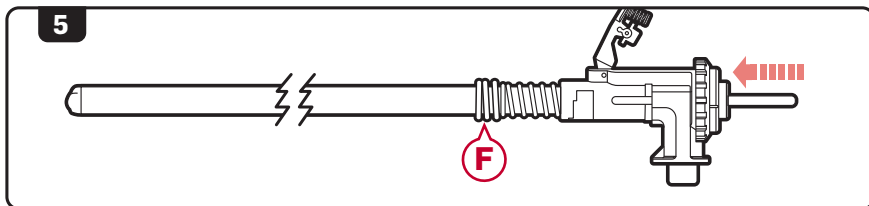
WARNING

DO NOT ADD OIL TO THE HOP-UP BUCKING. EXCESSIVE OIL ON THE HOP-UP BUCKING MAY NEGATE THE HOP-UP, DECREASING RANGE AND ACCURACY.



CLEANING AND MAINTENANCE

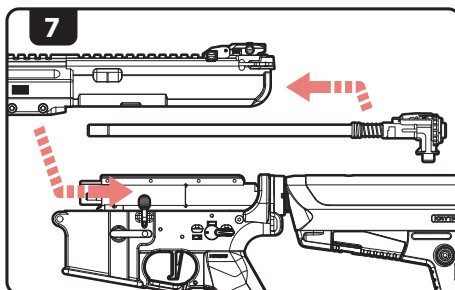
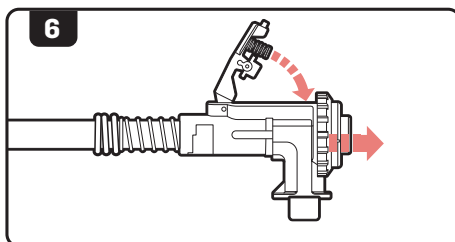
5. Run the cleaning rod through the barrel from back to front (in the same direction that BBs travel).



WARNING

KEEP TRACK OF THE BARREL SPRING (F), IT CAN SEPARATE FROM THE BARREL ASSEMBLY.

6. Pull back on the hop-up adjustment wheel and lower the hop-up adjustment lever back into position.
7. Reinsert the hop-up barrel assembly into the receiver and reassemble as described in the Assembly section.



TROUBLE SHOOTING GUIDE



WARNING

WHEN TROUBLESHOOTING, FOLLOW THE SAFETY MEASURES DESCRIBED IN THIS MANUAL.

| SYMPTOMS | CAUSE | SOLUTIONS |
|--|---|--|
| Not firing/No sound | Safety is engaged | Change selector to Semi Auto or Full Automatic Mode |
| | Low power or dead battery | Charge and replace battery |
| | Blown out fuse | Replace with new fuse |
| | Loose connection | Contact customer service for professional care |
| Motor is running but not firing | Inspect magazine | Check if magazine is properly loaded into the gun Ensure magazine is loaded with ammunition Ensure the hi-cap magazine is properly wound |
| Motor or battery is hot after short use | Damaged battery | Inspect and/or replace battery |
| | Loose connection terminal | Contact customer service for professional care |
| Semi-Auto feature not functioning properly | Battery voltage or discharge is too high | Condition or replace battery |
| Semi-Auto feature not working at all | Disconnecter is not engaged properly | Reset the disconnecter by setting the selector to safe, then to automatic, then to semi |
| Firing cycle slowing down | Battery is low on power | Charge or replace battery |
| High pitch or grinding noise | Motor level is not adjusted properly | Contact customer service for professional care |
| BB travels upward | Hop-up adjusted too high | Dial down the hop-up adjustment |
| BB travels downward | Hop-up adjusted too low | Dial up the hop-up adjustment |
| BB double feeding or rolling out of the barrel | Excessive grease or oil in the hopup chamber | Fire at least 200 rounds to eliminate excessive grease from the chamber Clean hop-up unit with supplied cleaning rod |
| | Hop-up unit is turned off | Turn hop-up unit on |
| Hop-up unit can't be adjusted | Hop-up adjustment arm is not set properly | Reset hop-up adjustment arm (See page 19, step 6 for reassembly) |
| Inner barrel is jammed or jamming | Use of recycled or low quality BBs | Use only KRYTAC branded or other high quality BBs |
| | Inner Barrel is contaminated with BBs or debris | Clear and/or clean inner barrel with supplied cleaning rod (See page 12 for clearing jam section and page 18 for cleaning and maintenance section) |
| Hi-Cap magazine not feeding | Magazine has not been wound | Wind wheel underneath magazine |
| | BBs are lodged inside the magazine | Shake or tap magazine to clear the jam |
| | Internal obstruction | Contact customer service for professional care |

OPERATING UNDER HARSH CONDITIONS

When operating under harsh conditions, special maintenance may be required to match the climate conditions of a specific operational area.

Dust and Sand

In harsh dusty or sandy environments, excessive debris can cause malfunctions and/or excessive wear on parts. Keep the gun covered and protected while not in use. When performing maintenance, use lubrication sparingly as it tends to attract dirt and other particles. After use in a dusty or sandy area, always field strip the gun, as outlined in the Disassembly section, cleaning all the areas that can be reached with a soft, clean, lint-free cloth.

Heavy Rain

Never submerge or expose your gun to extremely wet environments. Exposure to such conditions may cause electrical failure and fluid to build-up inside the gearbox. Dry completely with a clean, lint-free cloth and clean inner barrel when necessary.

HEARING PROTECTION REQUIREMENT

HEARING PROTECTION REQUIREMENT FOR EUROPEAN COMMUNITY

The Barrett REC7 MK3 SBR, Carbine fulfills all relevant provisions of:

EMC Directive (2014/30/EU)
RoHS Directive (2011/65/EU)
General Product Safety Directive (2001/95/EC)

In conjunction with the following harmonized standards or technical specifications for the design and manufacture

EN 50581:2012; EN 55014-1:2006; EN 55014-2:1997

In accordance with the above mentioned standards, in some applications, noise or vibration levels may exceed the minimum Noise levels of 85db(A). If Noise levels exceed 85dB(A), appropriate ear protection must be used to prevent any damages due to sound emissions.

CONTACT INFO

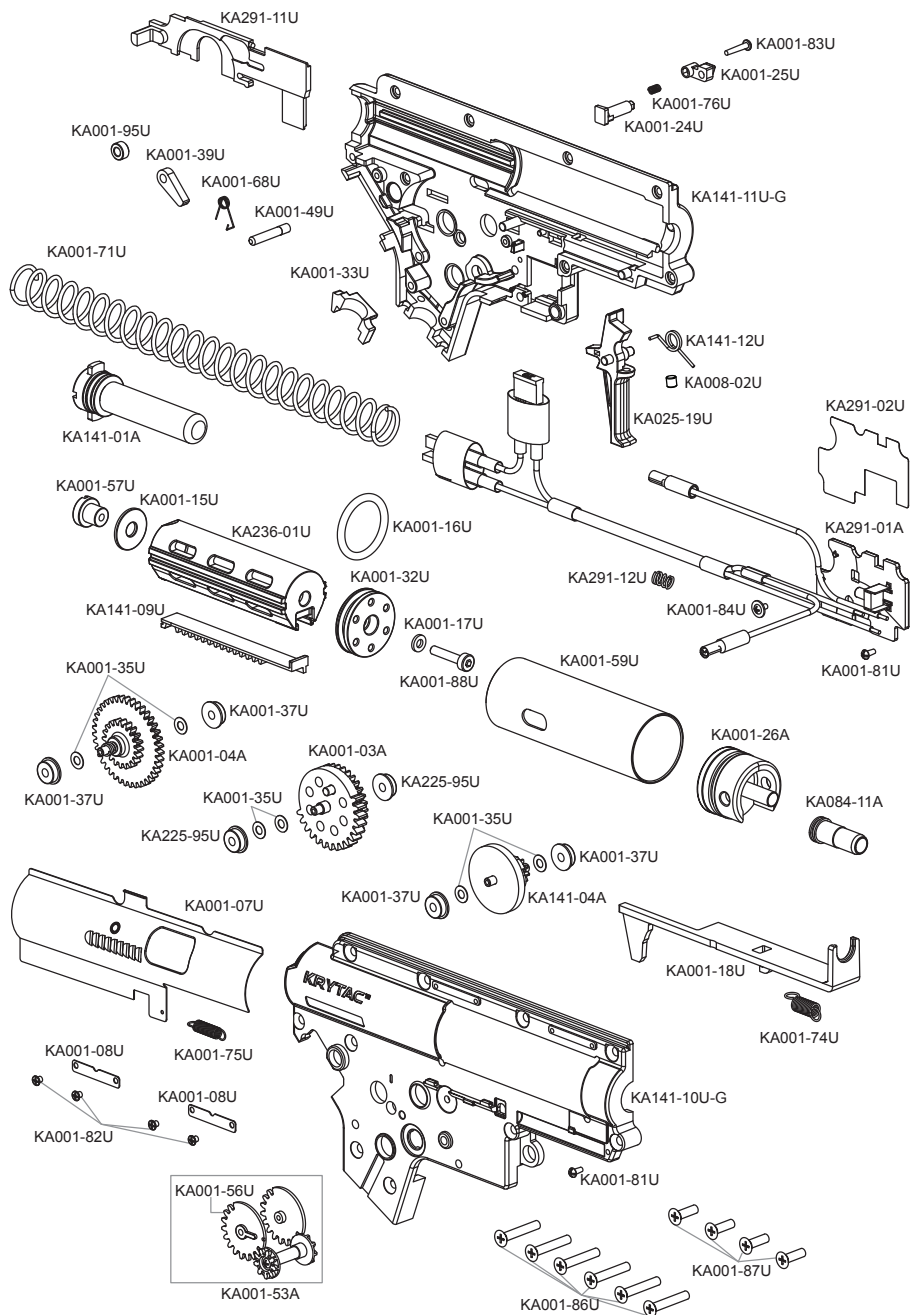
For additional troubleshooting, information, or questions regarding EMG customer service:

Phone: 626-286-0360

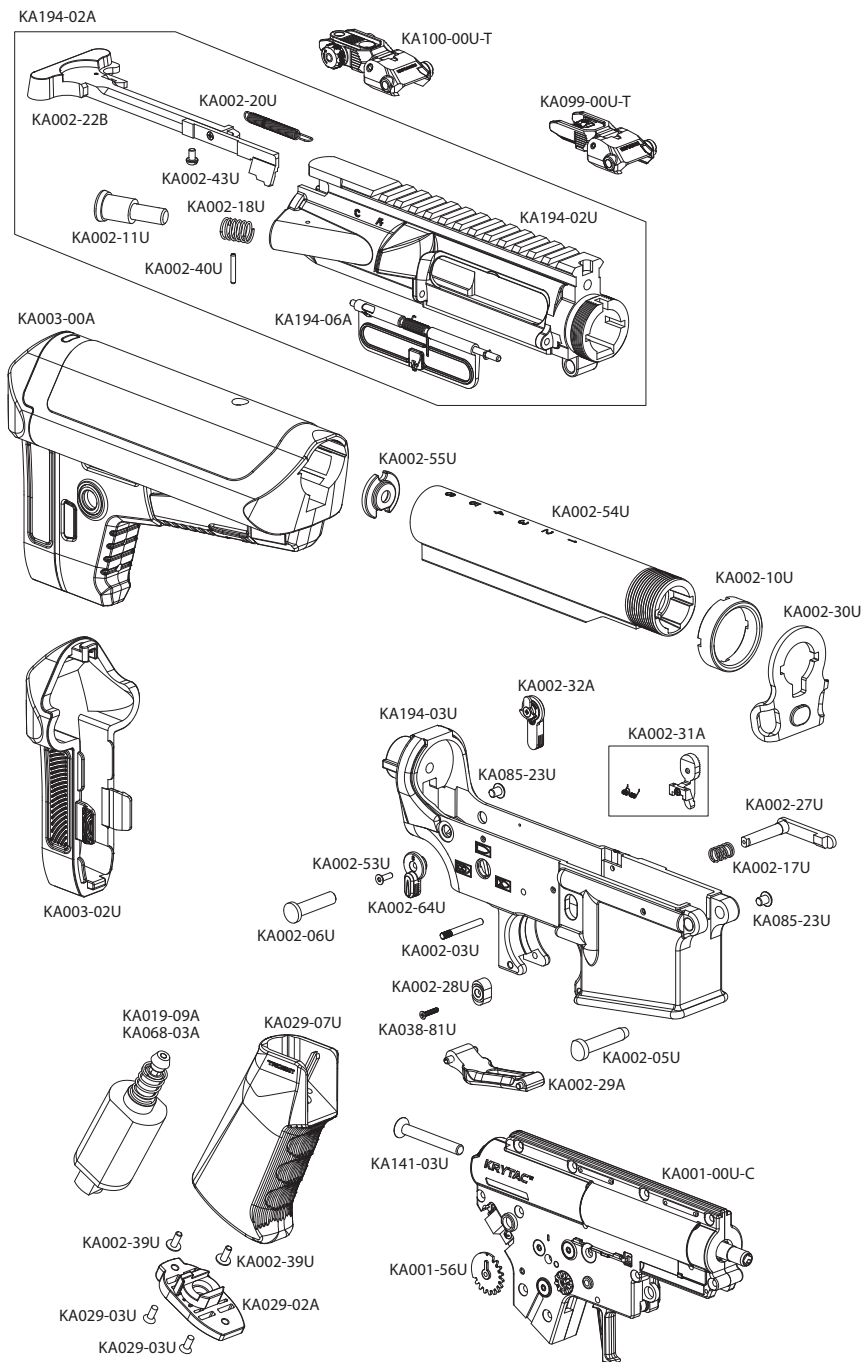
Email: info@emgarms.com

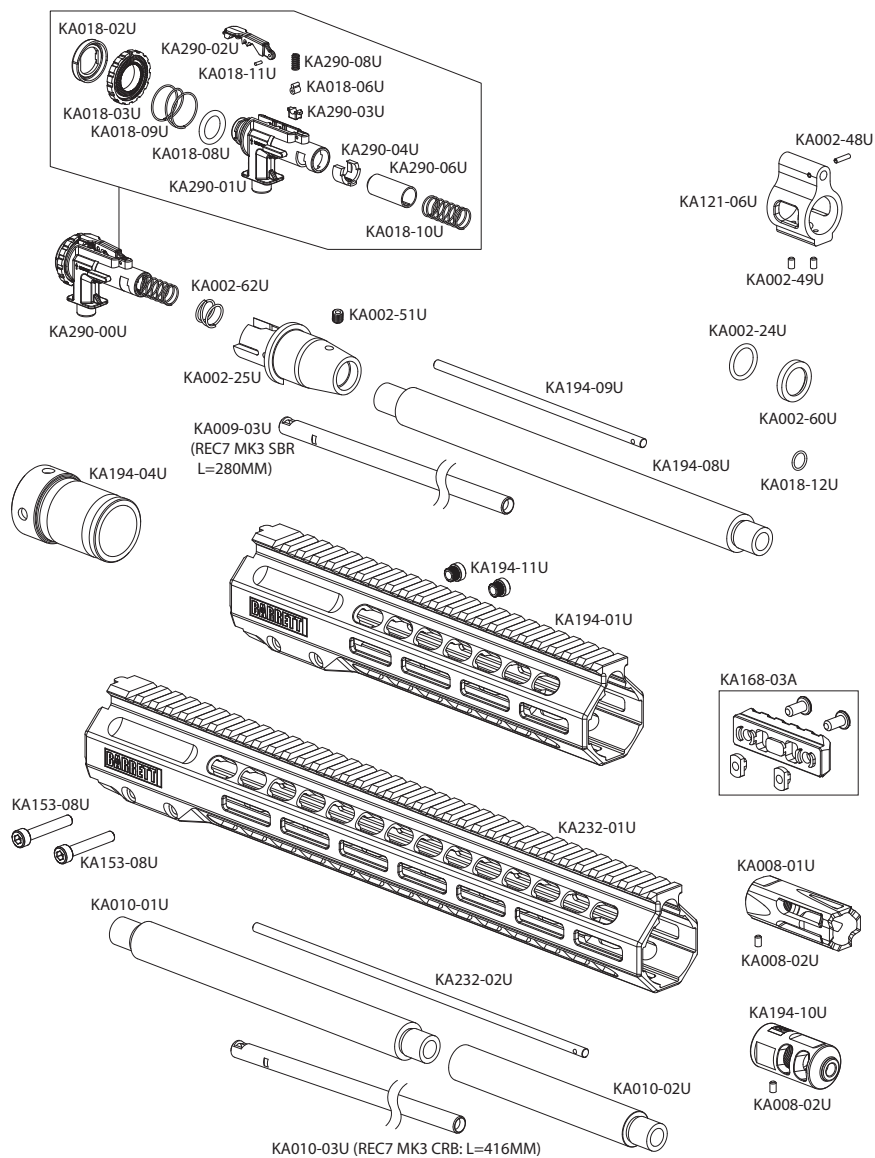
Web: www.emgarms.com

PARTS DIAGRAM: GEARBOX



PARTS DIAGRAM





PARTS LIST

| PART # | NAME | | |
|-------------|--------------------------------|-----------|-------------------------------|
| KA001-00U-C | GEARBOX ASSEMBLY | KA002-10U | CASTLE NUT |
| KA001-03A | SECTOR GEAR | KA002-11U | FORWARD ASSIST BUTTON |
| KA001-04A | SPUR GEAR | KA002-17U | MAGAZINE RELEASE SPRING |
| KA001-07U | BOLT PLATE | KA002-18U | FORWARD ASSIST SPRING |
| KA001-08U | BOLT PLATE GUIDE (2) | KA002-20U | CHARGING HANDLE SPRING |
| KA001-15U | MAIN SPRING SHIM | KA002-22B | CHARGING HANDLE ASSEMBLY |
| KA001-16U | PISTON HEAD O-RING | KA002-24U | CRUSH WASHER O-RING |
| KA001-17U | PISTON HEAD SHIM | KA002-25U | OUTER BARREL BASE |
| KA001-18U | TAPPET PLATE | KA002-27U | MAGAZINE RELEASE |
| KA001-24U | BOLT PLATE LOCK | KA002-28U | MAGAZINE RELEASE BUTTON |
| KA001-25U | BOLT PLATE LOCK BUTTON | KA002-29A | TRIGGER GUARD |
| KA001-26A | CYLINDER HEAD ASSEMBLY | KA002-30U | SLING PLATE |
| KA001-32U | PISTON HEAD | KA002-31A | BOLT STOP ASSEMBLY |
| KA001-33U | WIRING COVER | KA002-32A | LEFT SELECTOR ASSEMBLY |
| KA001-35U | SHIM (6) | KA002-39U | MOTOR PLATE SCREW (2) |
| KA001-37U | BEARING (4) | KA002-40U | FORWARD ASSIST PIN |
| KA001-39U | ANTI-REVERSE LATCH | KA002-43U | CHARGING HANDLE ANCHOR SCREW |
| KA001-49U | ANTI-REVERSE LATCH PIN | KA002-48U | GAS BLOCK PIN |
| KA001-53A | SELECTOR GEAR ASSEMBLY | KA002-49U | GAS BLOCK SCREWS (2) |
| KA001-56U | SELECTOR GEAR (RIGHT) | KA002-51U | OUTER BARREL BASE SCREW |
| KA001-57U | PISTON HEAD NUT | KA002-53U | RIGHT SELECTOR SCREW |
| KA001-59U | CYLINDER (TYPE 1) | KA002-54U | BUFFER TUBE |
| KA001-68U | ANTI-REVERSE LATCH SPRING | KA002-55U | BUFFER TUBE SCREW CAP |
| KA001-71U | MAIN SPRING (M120) | KA002-60U | CRUSH WASHER |
| KA001-74U | TAPPET PLATE SPRING | KA002-62U | HOP-UP OUTER TENSION SPRING |
| KA001-75U | BOLT RETURN SPRING | KA002-64U | RIGHT SELECTOR |
| KA001-76U | BOLT PLATE LOCK SPRING | KA003-00A | STOCK ASSEMBLY |
| KA001-81U | BUTTON MICRO SCREW (2) | KA003-02U | BUTTPAD |
| KA001-82U | BOLT PLATE SCREW (4) | KA008-01U | MUZZEL BREAK (ORANGE PLASTIC) |
| KA001-83U | BOLT PLATE LOCK SCREW | KA008-02U | SET SCREW |
| KA001-84U | FLAT MICRO SCREW | KA009-03U | INNER BARREL (280MM) |
| KA001-86U | GEARBOX SHELL SCREW (LONG)(6) | KA010-01U | OUTER BARREL (CRB) |
| KA001-87U | GEARBOX SHELL SCREW (SHORT)(4) | KA010-02U | OUTER BARREL EXTENSION (CRB) |
| KA001-88U | PISTON HEAD SCREW | KA010-03U | INNER BARREL (416MM) |
| KA001-95U | ARL SPACER | KA018-02U | ADJUSTMENT CAP |
| KA002-03U | GEARBOX PIN | KA018-03U | ADJUSTMENT WHEEL |
| KA002-05U | FRONT RECEIVER PIN | | |
| KA002-06U | REAR RECEIVER PIN | | |

| | | | |
|-------------|---------------------------------|-----------|--|
| KA018-06U | NUB | KA232-01U | HANDGUARD (REC7 CRB) |
| KA018-08U | ADJUSTMENT RETENSION O-RING | KA232-02U | GAS TUBE (CRB) |
| KA018-09U | ADJUSTMENT SPRING | KA236-01U | PISTON BODY |
| KA018-10U | HOP-UP TENSION SPRING | KA290-00U | GEN 2 HOP-UP ASSEMBLY |
| KA018-11U | ADJUSTMENT LEVEL PIN | KA290-01U | GEN 2 HOP-UP MAIN BODY |
| KA018-12U | FRONT BARREL O-RING | KA290-02U | GEN 2 HOP-UP ARM |
| KA019-09A | KRYTAC NEO HIGH TORQUE MOTOR | KA290-03U | GEN 2 HOP-UP SPACER NUB |
| KA025-19U | TRIGGER | KA290-04U | GEN 2 HOP-UP BARREL CLIP |
| KA029-01U | PISTOL GRIP | KA290-06U | GEN 2 HOP-UP BUCKING |
| KA029-02A | MOTOR PLATE ASSEMBLY | KA290-08U | GEN 2 HOP-UP ARM SPRING |
| KA029-03U | MOTOR PLATE SCREW (2) | KA291-01A | ELECTRONIC CONTROL UNIT AND WIRING ASSEMBLY |
| KA038-81U | MAGAZINE RELEASE SCREW | KA291-11A | SELECTOR PLATE FOR ECU |
| KA068-03A | KRYTAC PERFORMACE MOTOR | KA291-12U | MICROSWITCH TRIGGER SPRING |
| KA084-11A | AIR NOZZLE | | |
| KA085-23U | RECEIVER PIN CAP SCREW (2) | | |
| KA099-00U-T | FRONT SIGHT ASSEMBLY | | |
| KA100-00U-T | REAR SIGHT ASSEMBLY | | |
| KA121-06U | GAS BLOCK | | |
| KA141-01A | SPRING GUIDE ASSEMBLY | | |
| KA141-03U | BUFFER TUBE SCREW | | |
| KA141-04A | BEVEL GEAR | | |
| KA141-09U | PISTON TOOTH RACK | | |
| KA141-10U-G | GEARBOX SHELL (RIGHT) | | |
| KA141-11U-G | GEARBOX SHELL (LEFT) | | |
| KA141-12U | TRIGGER SPRING | | |
| KA153-08U | RETENTION SCREW (2) | | |
| KA168-03A | M-LOK SIDE RAIL (5-SLOT) | | |
| KA194-01U | HANDGUARD (REC7 SBR) | | |
| KA194-02A | UPPER RECEIVER ASSEMBLY | | |
| KA194-02U | UPPER RECEIVER | | |
| KA194-03U | LOWER RECEIVER | | |
| KA194-04U | REC7 BARREL NUT | | |
| KA194-06A | DUST COVER ASSEMBLY | | |
| KA194-08U | OUTER BARREL (SBR) | | |
| KA194-09U | GAS TUBE (SBR) | | |
| KA194-10U | REC7 MUZZEL BREAK (METAL) | | |
| KA194-11U | RETENTION NUT (2) | | |
| KA225-95U | BEARING (2) | | |

www.emgarms.com

© Copyright 2024
KRISS INDUSTRIES ASIA
Subject to change

V.01_2024.10.19

